



GRIFFIN

THE PROPERTY PEOPLE



Plymouth Road Chafford Hundred, Grays, RM16 6BL

Asking price £250,000

**** TWO BEDROOMS **** NO ONWARD CHAIN **** GOOD LEASE ****

We are delighted to offer for sale this TWO BEDROOM first floor maisonette situated on the popular Chafford hundred development, and being ideally placed for access to the local shops, schools, and Chafford Hundred train station which is on the Southend to London Fenchurch Street C2C line.

The property itself benefits from having good sized bedrooms, parking to the rear, own entrance door, and is also offered on NO ONWARD chain. Only by viewing can this property be fully appreciated and we would therefore recommend viewing as soon as possible.

Call the sales team today....

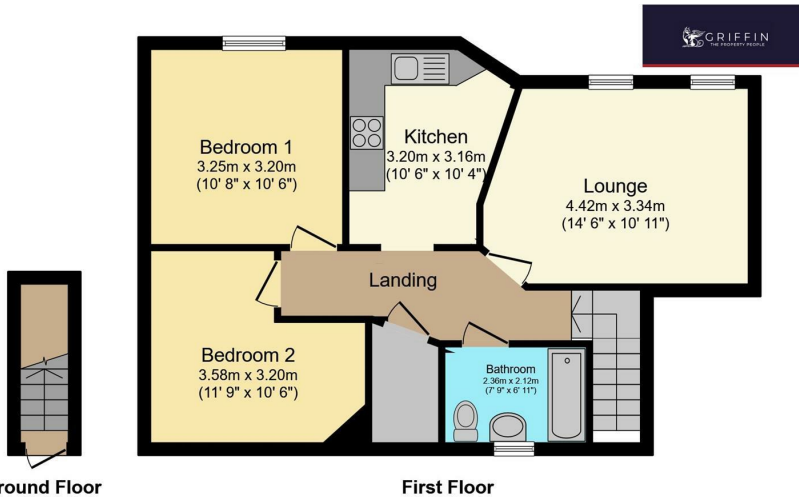
Viewing

Please contact our Grays Sales Office on 01375 397872 if you wish to arrange a viewing appointment for this property or require further information.

- Two Bedrooms
- Maisonette
- Parking
- No Onward Chain
- Good Lease
- Own Entrance Door
- Viewing Advised
- EPC: C74



Floor Plan



Ground Floor

First Floor

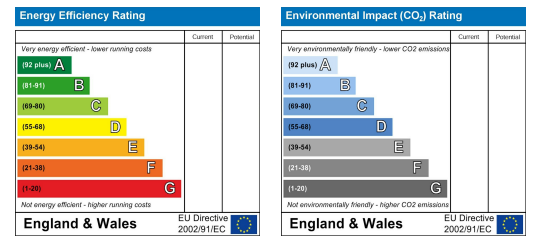
Total floor area 59.7 m² (643 sq.ft.) approx

This floor plan is for illustrative purposes only. It is not drawn to scale. Any measurements, floor areas (including any total floor area), openings and orientation are approximate. No details are guaranteed, they cannot be relied upon for any purpose and they do not form part of any agreement. No liability is taken for any error, omission or misstatement. A party must rely upon its own inspection(s). Powered by www.focalagent.com

Area Map



Energy Efficiency Graph



These particulars, whilst believed to be accurate are set out as a general outline only for guidance and do not constitute any part of an offer or contract. Intending purchasers should not rely on them as statements of representation of fact, but must satisfy themselves by inspection or otherwise as to their accuracy. No person in this firm's employment has the authority to make or give any representation or warranty in respect of the property.