



**GRIFFIN**  
THE PROPERTY PEOPLE



## Woodside Close , Woodside, RM16 2DN

Asking price £400,000

\*\*\*\* SEMI DETACHED \*\*\*\* NO ONWARD CHAIN \*\*\*\* PARKING \*\*\*\*

Located on the ever sought after Woodside, Griffin are happy to bring the perfect family home to market.

This semi-detached home offers great light and space throughout, including; modern fitted kitchen, ground floor cloakroom, FOUR sizeable bedrooms, family bathroom and a garage as well as being offered with NO ONWARD chain.

Woodside is a modern estate which began housing families in 2017 and has since gone on to become a well maintained, private development with ever growing interest.

Now is your chance to get yourself that dream home, call the sales team today.....

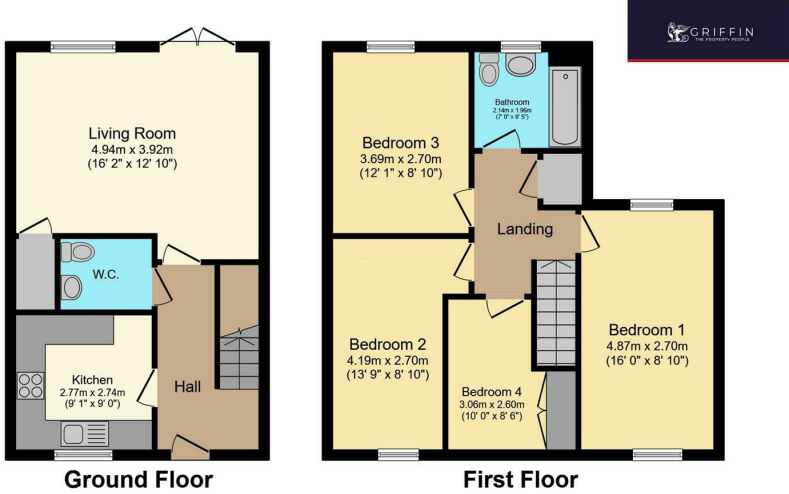
- Four Bedrooms
- Garage
- Great Location
- Viewing Advised
- No Onward Chain
- Cloakroom
- Good Sized Lounge
- EPC: B87

### Viewing

Please contact our Grays Sales Office on 01375 397872 if you wish to arrange a viewing appointment for this property or require further information.



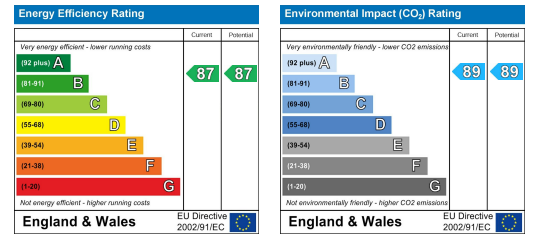
# Floor Plan



# Area Map



# Energy Efficiency Graph



Total floor area 93.9 m<sup>2</sup> (1,011 sq.ft.) approx  
 This floor plan is for illustrative purposes only. It is not drawn to scale. Any measurements, floor areas (including any total floor area), openings and orientation are approximate. No details are guaranteed, they cannot be relied upon for any purpose and they do not form part of any agreement. No liability is taken for any error, omission or misstatement. A party must rely upon its own inspection(s). Powered by www.focalagent.com



These particulars, whilst believed to be accurate are set out as a general outline only for guidance and do not constitute any part of an offer or contract. Intending purchasers should not rely on them as statements of representation of fact, but must satisfy themselves by inspection or otherwise as to their accuracy. No person in this firm's employment has the authority to make or give any representation or warranty in respect of the property.