



GRIFFIN

THE PROPERTY PEOPLE



Ark Avenue

Chafford Hundred, Grays, RM16 6QR

Guide price £350,000

*** GUIDE PRICE £350,000 - £375,000 ***

We are delighted to offer for sale this TWO bedroom semi detached house situated in this popular turning of Chafford Hundred and being ideally located for access to schools, local shopping parades, and access to the A13 London to Southend trunk road.

The property itself benefits from a conservatory, good sized garden, garage with parking in front of and is also offered with NO ONWARD chain. This really is a nice property, and we recommend viewing sooner rather than later to avoid disappointment.

Call the sales team today...

Viewing

Please contact our Grays Sales Office on 01375 397872 if you wish to arrange a viewing appointment for this property or require further information.

- No Onward Chain
- Well Presented
- Conservatory
- Garage
- Good Sized Garden
- Viewing Advised
- EPC: C69



2



1

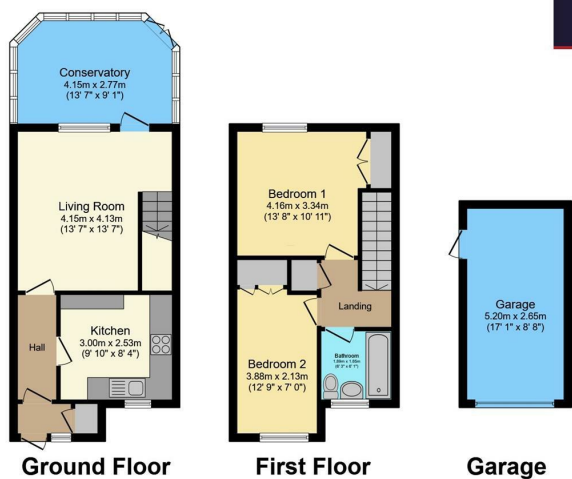


1



C

Floor Plan



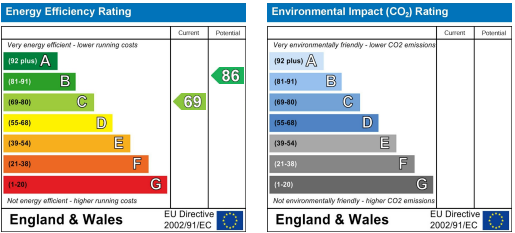
Total floor area 88.9 sq.m. (957 sq.ft.) approx

This floor plan is for illustrative purposes only. It is not drawn to scale. Any measurements, floor areas (including any total floor area), openings and orientation are approximate. No details are guaranteed, they cannot be relied upon for any purpose and they do not form part of any agreement. No liability is taken for any error, omission or misstatement. A party must rely upon its own inspection(s). Powered by www.focalagent.com

Area Map



Energy Efficiency Graph



These particulars, whilst believed to be accurate are set out as a general outline only for guidance and do not constitute any part of an offer or contract. Intending purchasers should not rely on them as statements of representation of fact, but must satisfy themselves by inspection or otherwise as to their accuracy. No person in this firms employment has the authority to make or give any representation or warranty in respect of the property.