



GRIFFIN

THE PROPERTY PEOPLE



St. Johns Road

Chadwell St Mary, Grays, RM16 4JU

Guide price £375,000

GUIDE PRICE £375,000 - £400,000 Immaculately presented three bedroom staggered terrace in a sought after location.

The property boasts a block paved driveway providing off street parking for multiple vehicles, garage that has been converted into a stunning kitchen breakfast area, family lounge leading to an extended dining area, low maintenance rear garden, three good sized bedrooms and a ground floor shower room.

The location is ideally suited for access to a13/m25 road links and lies within walking distance of local schools & shops.

- Terraced House
- Driveway
- Conservatory
- Ground Floor Shower Room
- First Floor Bathroom
- Viewing Advised
- Stunning Condition
- Extended
- EPC: D58

Viewing

Please contact our Grays Sales Office on 01375 397872 if you wish to arrange a viewing appointment for this property or require further information.



3



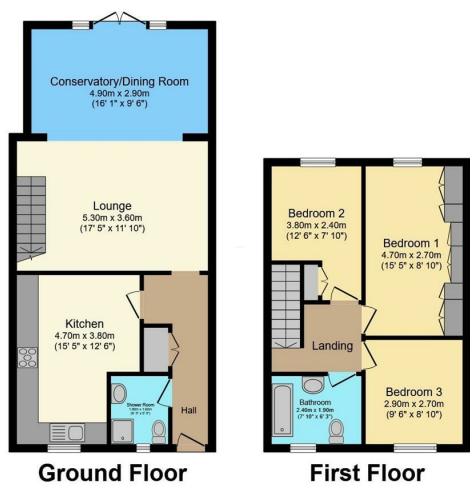
2



1



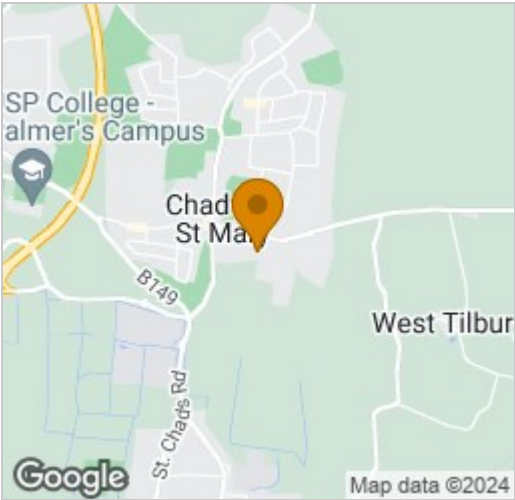
Floor Plan



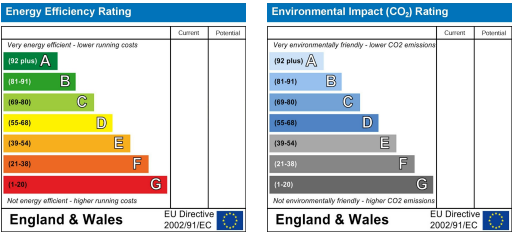
Total floor area 100.5 m² (1,081 sq.ft.) approx

This floor plan is for illustrative purposes only. It is not drawn to scale. Any measurements, floor areas (including any total floor area), openings and orientation are approximate. No details are guaranteed, they cannot be relied upon for any purpose and they do not form part of any agreement. No liability is taken for any error, omission or misstatement. A party must rely upon its own inspection(s). Powered by www.focalagent.com

Area Map



Energy Efficiency Graph



These particulars, whilst believed to be accurate are set out as a general outline only for guidance and do not constitute any part of an offer or contract. Intending purchasers should not rely on them as statements of representation of fact, but must satisfy themselves by inspection or otherwise as to their accuracy. No person in this firms employment has the authority to make or give any representation or warranty in respect of the property.