



GRIFFIN

THE PROPERTY PEOPLE



Fetherston Road
Stanford-Le-Hope, SS17 0BU

Guide price £500,000

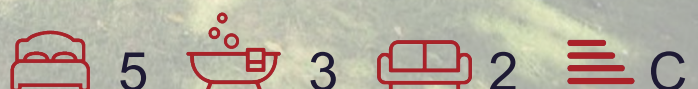
Guide Price £500,000 - £550,000 A FIVE BEDROOM DETACHED HOUSE located in a sought after location close to TOWN CENTRE, SCHOOLS and SHOPS, also access to C2C railway with its frequent services to LONDON and SOUTHEND ON SEA. There are other great features such as SOLAR PANELS to keep those bills down, an ENSUITE, UTILITY ROOM and CLOAKROOM as well as a lovely GARDEN with WORKSHOP. The OVERSIZED GARAGE with ELECTRIC ROLLER DOORS front and back is a nice bonus and ideal storage for a CARAVAN, CAMPER or maybe even a BOAT. AN ALARM AND CCTV SYSTEM is also included. Viewings are available immediately and they would be highly recommended.

For more information - click on the Key Facts for Buyers micro site - https://sprift.com/dashboard/property-report/?access_report_id=3191091

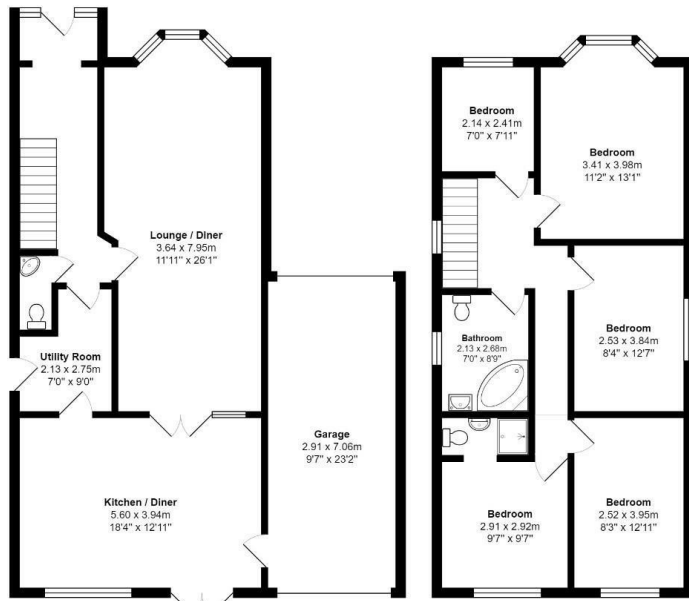
- FIVE BEDROOM DETACHED
- CLOSE TO TOWN, SHOPS AND SCHOOLS
- 60' GARDEN
- ENSUITE and CLOAKROOM
- UTILITY ROOM
- CLOAKROOM
- LARGE KITCHEN/DINER
- OVERSIZED GARAGE
- SOLAR PANELS TO ROOF
- EPC - C

Viewing

Please contact our Grays Sales Office on 01375 397872 if you wish to arrange a viewing appointment for this property or require further information.

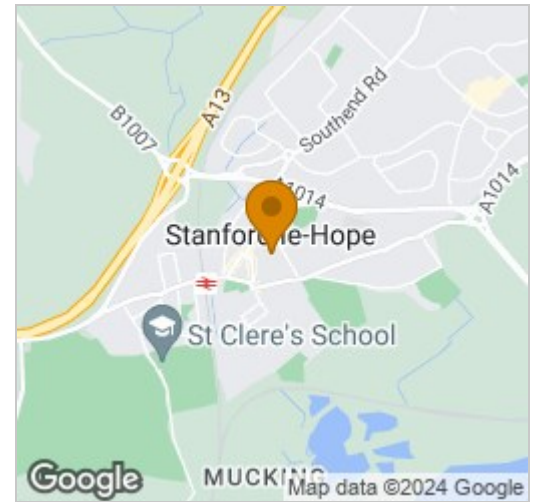


Floor Plan

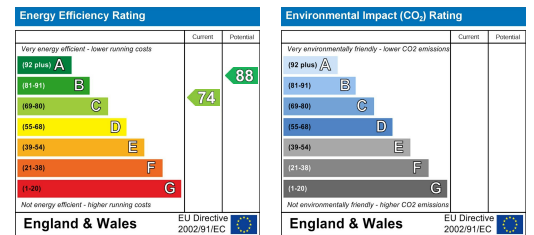


Total Area: 139.0 m² ... 1496 ft² (excluding garage)
 Measurements are approximate for illustrative purposes only and may have been taken from the widest area
 Floorplan Copyright The Estate Agents Photographer
 www.theestateagentsphotographer.co.uk

Area Map



Energy Efficiency Graph



These particulars, whilst believed to be accurate are set out as a general outline only for guidance and do not constitute any part of an offer or contract. Intending purchasers should not rely on them as statements of representation of fact, but must satisfy themselves by inspection or otherwise as to their accuracy. No person in this firm's employment has the authority to make or give any representation or warranty in respect of the property.