



GRIFFIN  
THE PROPERTY PEOPLE



## Gideons Way

, Stanford-le-hope, SS17 8EU

Guide price £325,000

Griffin are delighted to offer for sale with NO ONWARD CHAIN this Three Bedroom house with its own Garage.

Accommodation comprises Entrance hall, lounge, kitchen/diner, first floor landing, three bedrooms and a family bathroom.

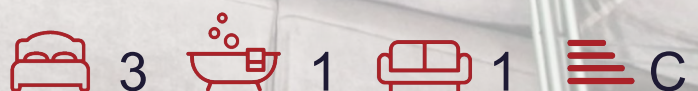
The property benefits from having Double glazing, Gas central heating, courtyard rear garden and a garage.

An early internal viewing is strongly recommended.

\*\* GUIDE PRICE £325,000 to £350,000\*\*

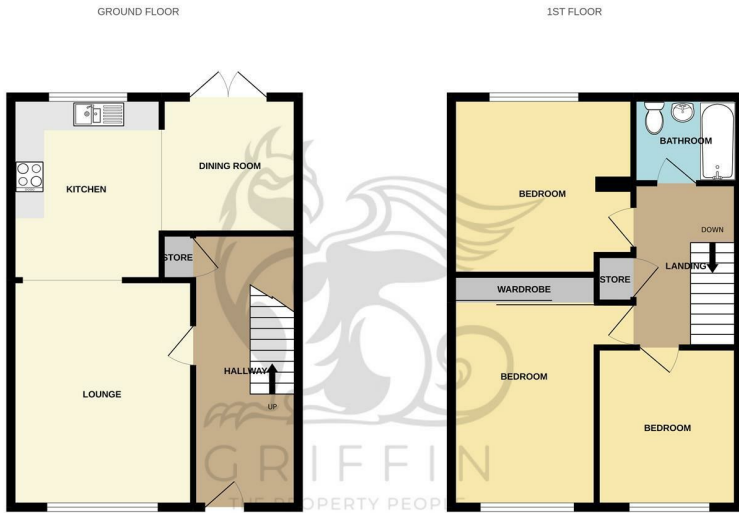
### Viewing

Please contact our Grays Sales Office on 01375 397872 if you wish to arrange a viewing appointment for this property or require further information.





# Floor Plan

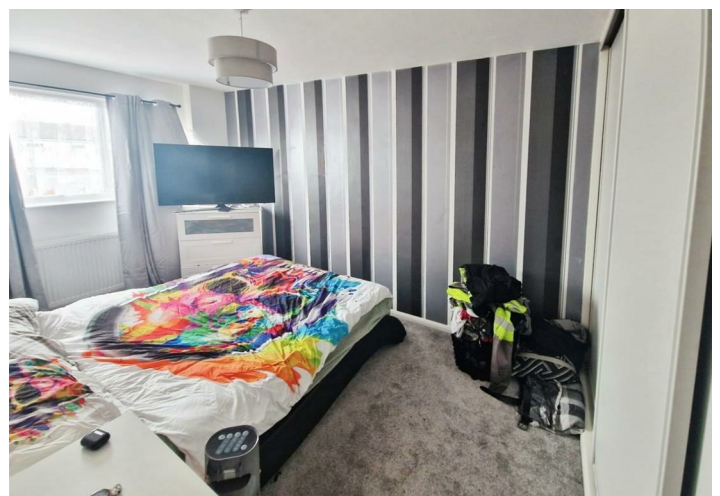
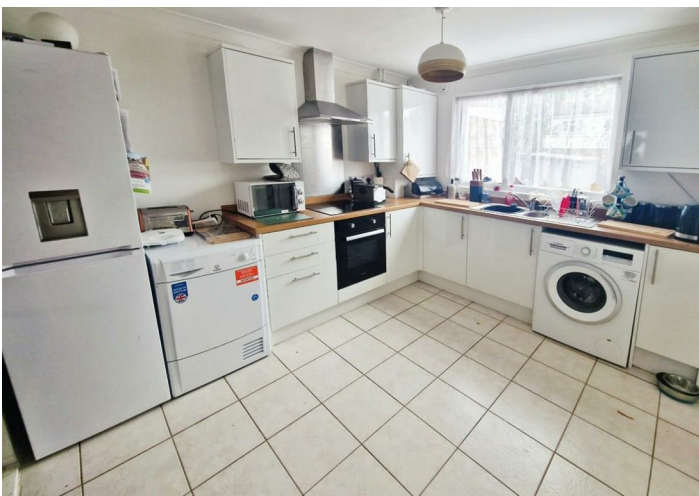
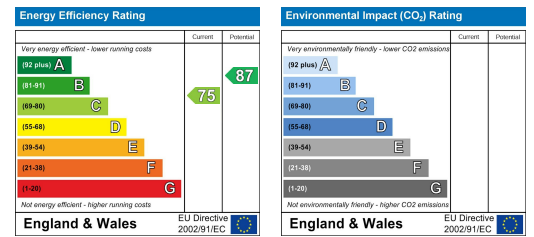


Whilst every attempt has been made to ensure the accuracy of the floorplan contained here, measurements of doors, windows, rooms and any other items are approximate and no responsibility is taken for any errors, omissions or mis-statements. This plan is for illustrative purposes only and should be used as such by any prospective purchaser. The services, systems and appliances shown have not been tested and no guarantee as to their operability or efficiency can be given. Made with Metrepx C2022

# Area Map



# Energy Efficiency Graph



These particulars, whilst believed to be accurate are set out as a general outline only for guidance and do not constitute any part of an offer or contract. Intending purchasers should not rely on them as statements of representation of fact, but must satisfy themselves by inspection or otherwise as to their accuracy. No person in this firm's employment has the authority to make or give any representation or warranty in respect of the property.