



GRIFFIN

THE PROPERTY PEOPLE



Dock Road
Grays, RM17 6EY

Guide price £275,000

**** 2/3 BEDROOMS **** NO ONWARD CHAIN **** GUIDE PRICE £275,000 - £300,000 **** TWO RECEPTION ROOMS ****

We are delighted to offer for sale this TWO/THREE BEDROOMS terraced house situated in the Little Thurrock area of Grays and being ideally placed for access to the A13 London to Southend trunk road, bus routes, and local schools.

The property benefits from having two reception rooms, lean to which is being used as a utility room, good sized bedrooms and a rear garden. Only by viewing can this property be fully appreciated and we would therefore recommend viewing at your earliest convenience to avoid disappointment.

Call the sales team today....

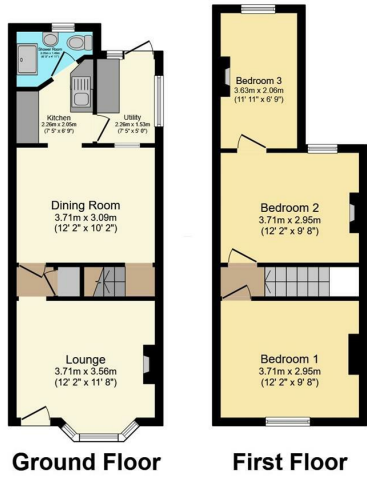
Viewing

Please contact our Grays Sales Office on 01375 397872 if you wish to arrange a viewing appointment for this property or require further information.

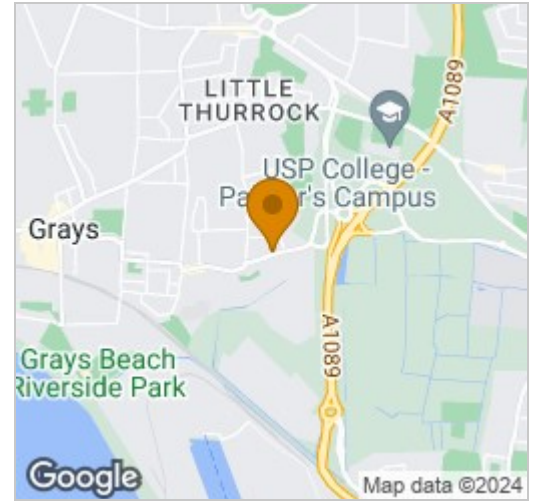
- Terraced House
- Two/Three Bedrooms
- Lounge
- Dining Room
- Ground Floor Bathroom
- Utility Area
- Garden
- No Onward Chain
- EPC: D65



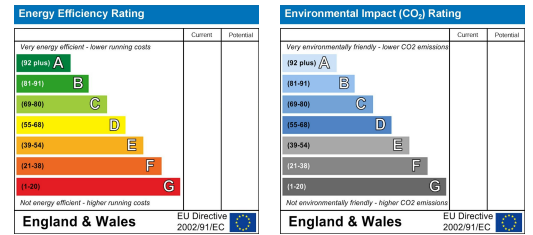
Floor Plan



Area Map



Energy Efficiency Graph



Total floor area 71.7 m² (772 sq.ft.) approx
 This floor plan is for illustrative purposes only. It is not drawn to scale. Any measurements, floor areas (including any total floor area), openings and orientation are approximate. No details are guaranteed, they cannot be relied upon for any purpose and they do not form part of any agreement. No liability is taken for any error, omission or misstatement. A party must rely upon its own inspection(s). Powered by www.focalagent.com



These particulars, whilst believed to be accurate are set out as a general outline only for guidance and do not constitute any part of an offer or contract. Intending purchasers should not rely on them as statements of representation of fact, but must satisfy themselves by inspection or otherwise as to their accuracy. No person in this firm's employment has the authority to make or give any representation or warranty in respect of the property.