



GRIFFIN
THE PROPERTY PEOPLE



Conway Gardens , Grays, RM17 6HG

£125,000

****CHAIN FREE**** Griffin are delighted to offer for sale this ideal investment opportunity/first time purchase for this GROUND FLOOR studio apartment within Conway Gardens, Grays. Internally the property offers a separate kitchen, separate bathroom and an open space providing a lounge/bedroom area. Further details include electric heating. The property is also within walking distance to Grays mainline railway station and to Grays Town Centre.

Viewing

Please contact our Grays Sales Office on 01375 397872 if you wish to arrange a viewing appointment for this property or require further information.



1



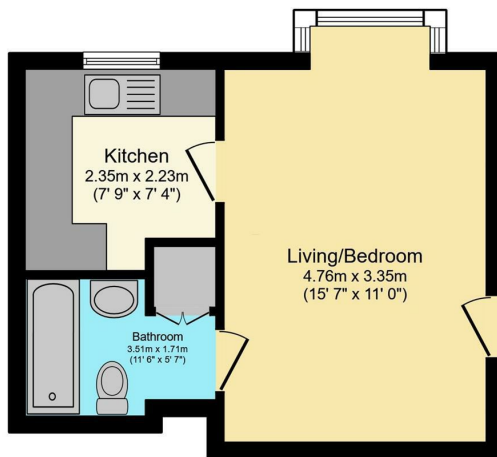
1



1



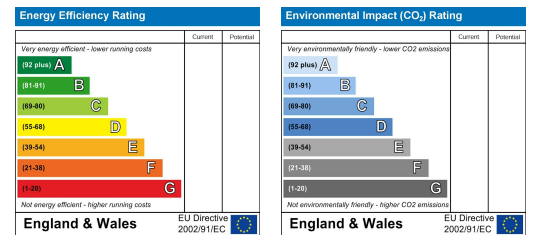
Floor Plan



Area Map

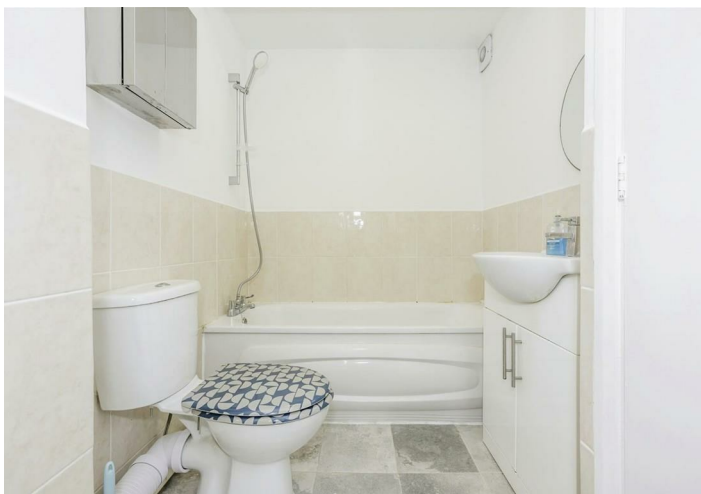


Energy Efficiency Graph



Total floor area 27.8 m² (299 sq.ft.) approx

This floor plan is for illustrative purposes only. It is not drawn to scale. Any measurements, floor areas (including any total floor area), openings and orientation are approximate. No details are guaranteed, they cannot be relied upon for any purpose and they do not form part of any agreement. No liability is taken for any error, omission or misstatement. A party must rely upon its own inspection(s). Powered by www.focalagent.com



These particulars, whilst believed to be accurate are set out as a general outline only for guidance and do not constitute any part of an offer or contract. Intending purchasers should not rely on them as statements of representation of fact, but must satisfy themselves by inspection or otherwise as to their accuracy. No person in this firm's employment has the authority to make or give any representation or warranty in respect of the property.