



GRIFFIN
THE PROPERTY PEOPLE



Fieldway

Stifford Clays, Grays, RM16 2AT

Asking price £400,000

**** THREE BEDROOMS **** CONSERVATORY **** OFF STREET PARKING ****
LOVELY GARDEN ****

We are delighted to offer for sale this THREE BEDROOM terraced house situated within this popular road of Stifford Clays and being ideally located for access to local schools, shopping parades, and access to the A13 London to Southend trunk road.

The property itself benefits from having parking to the front, conservatory, wrap around kitchen, ground floor shower room and first floor four piece bathroom suite. Only by viewing can this house be truly appreciated and we would therefore recommend viewing as soon as possible to avoid disappointment.

Call the sales team today.....

Viewing

Please contact our Grays Sales Office on 01375 397872 if you wish to arrange a viewing appointment for this property or require further information.

- Well Presented
- Conservatory
- Four Piece Bathroom Suite
- Wrap Around Kitchen
- Great Location
- Viewing Advised
- EPC: TBC



3



2

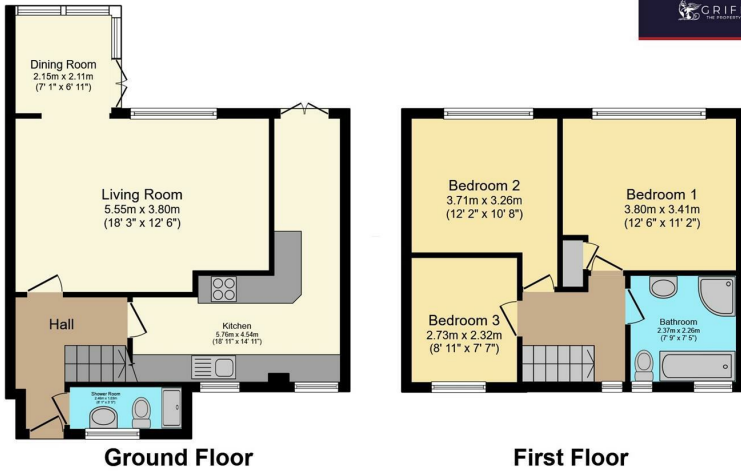


1

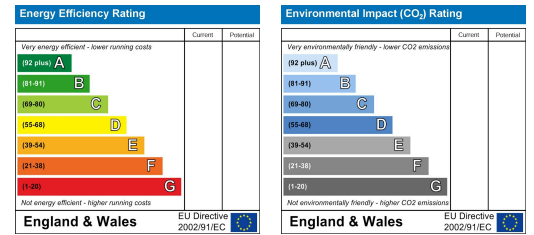


Floor Plan

Area Map



Energy Efficiency Graph



Total floor area 90.1 sq.m. (970 sq.ft.) approx

This floor plan is for illustrative purposes only. It is not drawn to scale. Any measurements, floor areas (including any total floor area), openings and orientation are approximate. No details are guaranteed, they cannot be relied upon for any purpose and they do not form part of any agreement. No liability is taken for any error, omission or misstatement. A party must rely upon its own inspection(s). Powered by www.focalagent.com



These particulars, whilst believed to be accurate are set out as a general outline only for guidance and do not constitute any part of an offer or contract. Intending purchasers should not rely on them as statements of representation of fact, but must satisfy themselves by inspection or otherwise as to their accuracy. No person in this firm's employment has the authority to make or give any representation or warranty in respect of the property.