



GRIFFIN  
THE PROPERTY PEOPLE



## Palmerston Road , Grays, RM20 4YP

Guide price £325,000

\*\*\*\* CHAIN FREE \*\*\*\* GUIDE PRICE £325,000 - £350,000 \*\*\*\*

PLENTY OF SPACE, AMAZING OPPORTUNITY !!! Stop looking and start viewing this charming family home in the quiet location of Palmerston Road offering an excellent space with three great size bedroom and lovely condition throughout. For the new owners, there isn't much this home doesn't offer. Three generous bedrooms, ample living space. Externally there is a pleasant rear garden and artificial grass. Parking for 2 cars on drive, provided Underfloor heating throughout ground floor, Jacuzzi bath, Granite worktops. It really needs to be seen to be appreciated the potential. Call the Grays Team on to book your viewing today!

### Viewing

Please contact our Grays Sales Office on 01375 397872 if you wish to arrange a viewing appointment for this property or require further information.



3



1



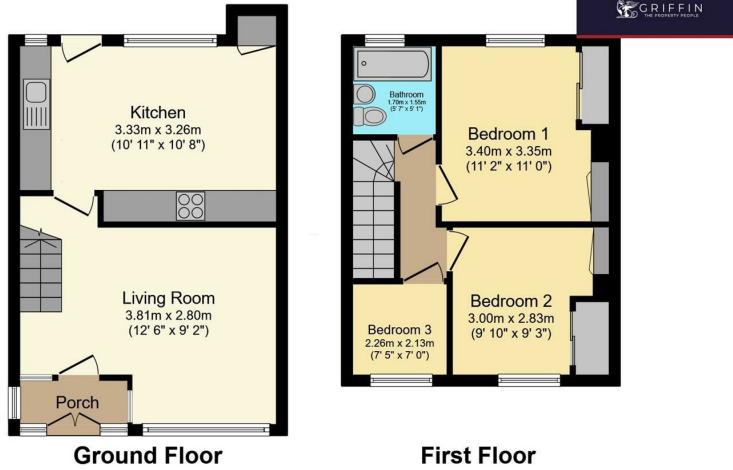
2



D



## Floor Plan



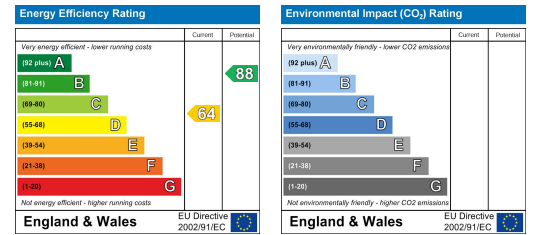
Total floor area 66.9 m<sup>2</sup> (720 sq.ft.) approx

This floor plan is for illustrative purposes only. It is not drawn to scale. Any measurements, floor areas (including any total floor area), openings and orientation are approximate. No details are guaranteed, they cannot be relied upon for any purpose and they do not form part of any agreement. No liability is taken for any error, omission or misstatement. A party must rely upon its own inspection(s). Powered by [www.focalagent.com](http://www.focalagent.com)

## Area Map



## Energy Efficiency Graph



These particulars, whilst believed to be accurate are set out as a general outline only for guidance and do not constitute any part of an offer or contract. Intending purchasers should not rely on them as statements of representation of fact, but must satisfy themselves by inspection or otherwise as to their accuracy. No person in this firm's employment has the authority to make or give any representation or warranty in respect of the property.