



GRIFFIN

THE PROPERTY PEOPLE



Treetops Close

, Grays, RM17 5FL

Asking price £350,000

****CHAIN FREE**** Positioned in a secluded road within easy access to local schools including Grays Convent and Quarry Hill Academy along Grays town centre is this two bedroom terrace family home. Internally boasting lounge, cloakroom, fitted kitchen/diner, two bedrooms. There is also a three piece white bathroom suite. Externally there is a rear pleasant garden and parking is provided by off street parking. The property offers the ideal first time buyers home. Don't delay, view today!

- CHAIN FREE
- TWO DOUBLE BEDROOMS

Grays is a popular residential town in Essex offering an array of amenities, shops and schools. There is a mainline railway station with direct links into London Fenchurch Street. The Lakeside Regional Shopping Centre and M25/A13 Dartford River Crossing are within easy access.

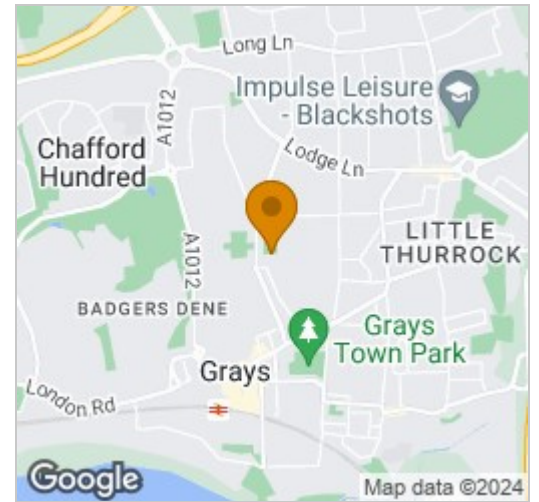
Viewing

Please contact our Grays Sales Office on 01375 397872 if you wish to arrange a viewing appointment for this property or require further information.

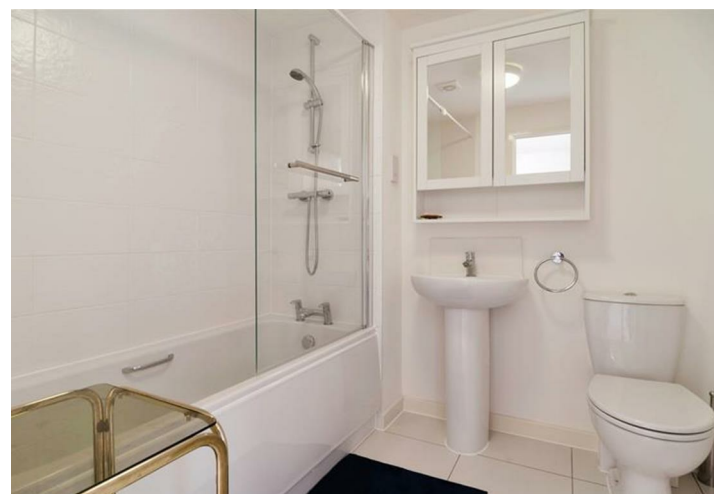
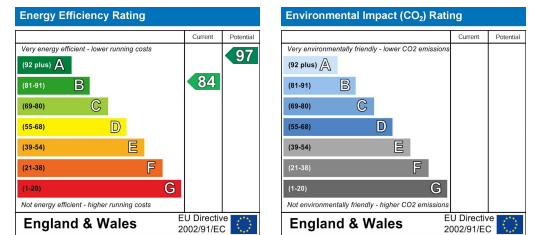


Floor Plan

Area Map



Energy Efficiency Graph



These particulars, whilst believed to be accurate are set out as a general outline only for guidance and do not constitute any part of an offer or contract. Intending purchasers should not rely on them as statements of representation of fact, but must satisfy themselves by inspection or otherwise as to their accuracy. No person in this firm's employment has the authority to make or give any representation or warranty in respect of the property.