



GRIFFIN

THE PROPERTY PEOPLE



Dock Road
Grays, RM17 6EX

£450,000

**** GUIDE PRICE £450,000 - £475,000 **** DETACHED PROPERTY **** THREE STOREY ****

We are delighted to offer for sale this unique, three bedroom detached character property in Little Thurrock which is ideally placed for access to the A13 London to Southend trunk road, local schools, bus routes and shopping parades.

The property is split over three levels, and benefits from a CINEMA area, two reception areas, courtyard garden, and a study area. Only by viewing can this property be fully appreciated and we would therefore recommend viewing at your earliest convenience to avoid certain disappointment.

Call the sales team today....

Viewing

Please contact our Grays Sales Office on 01375 397872 if you wish to arrange a viewing appointment for this property or require further information.

- Detached
- Three Bedrooms
- Shower Room & En-Suite
- 3 Storey Living
- Walled Garden
- Study Area
- Cinema Room
- Viewing Advised
- EPC: D64



3



2



1



D

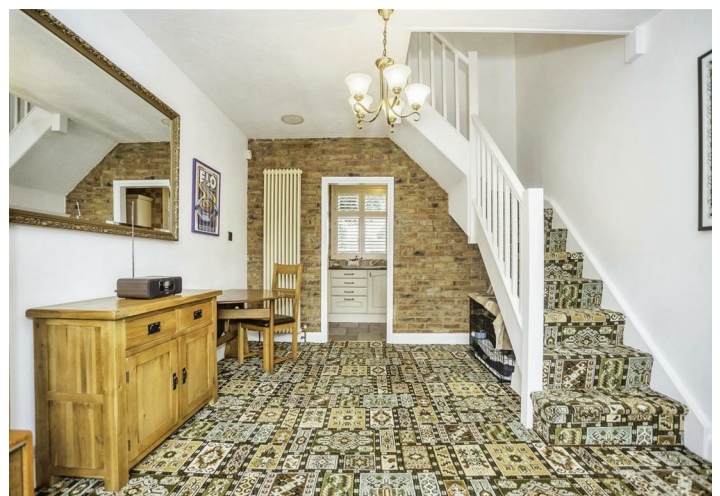
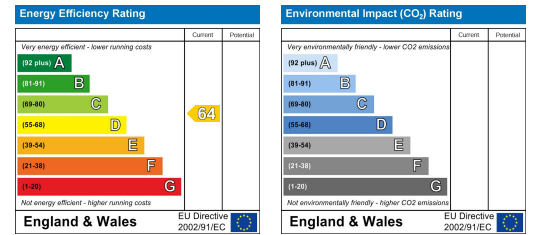
Floor Plan

Area Map



Total floor area 151.6 sq.m. (1,631 sq.ft.) approx
 This floor plan is for illustrative purposes only. It is not drawn to scale. Any measurements, floor areas (including any total floor area), openings and orientation are approximate. No details are guaranteed, they cannot be relied upon for any purpose and they do not form part of any agreement. No liability is taken for any error, omission or misstatement. A party must rely upon its own inspection(s). Powered by www.focalagent.com

Energy Efficiency Graph



These particulars, whilst believed to be accurate are set out as a general outline only for guidance and do not constitute any part of an offer or contract. Intending purchasers should not rely on them as statements of representation of fact, but must satisfy themselves by inspection or otherwise as to their accuracy. No person in this firm's employment has the authority to make or give any representation or warranty in respect of the property.