



GRIFFIN
THE PROPERTY PEOPLE



Cole Avenue , Chadwell St. Mary, RM16 4JZ

Asking price £325,000

CLOSE TO EAST TILBURY STATION | OFSTED 'GOOD' SCHOOL NEARBY - CHADWELL ST MARY PRIMARY SCHOOL | FANTASTIC MODERN HOME | IDEAL FOR FIRST TIME BUYER/YOUNG FAMILY/PORTFOLIO INVESTOR/HOUSE SHARE | 2 SPACIOUS DOUBLE BEDROOMS | STYLISH LIVING ROOM/KITCHEN/DINER | LARGE MODERN BATHROOM | LIGHT AND VERY WELL-PRESENTED HOME | VILLAGE LOCATION FEEL | LOCAL SHOPS AND FACILITIES | USP COLLEGE NEARBY | EASY ACCESS TO A13, A127 AND M25 | ARRANGE A VIEWING!

This modern semi-detached home oozes style and elegance. With interior décor that looks like its jumped straight from a design magazine, the next lucky owners will be able to move straight in and relax. Close to East Tilbury station, this home also has 2 parking spaces, a fabulous garden with a lawn. If you are a first time buyer, young family, house share or want to invest in your property portfolio, this is the home for you! Call us today and come and take a look around.

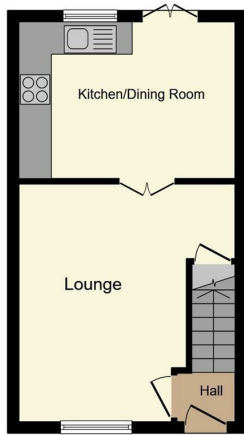
Viewing

Please contact our Grays Sales Office on 01375 397872 if you wish to arrange a viewing appointment for this property or require further information.

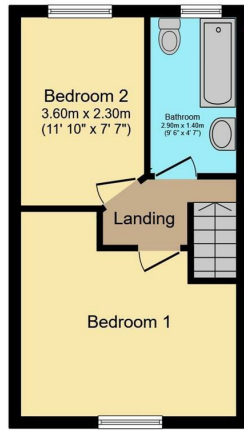
- SEMI DETACHED
- TWO PARKING SPACES
- NEWLY FITTED KITCHEN
- GREAT FIRST TIME BUYERS PURCHASE



Floor Plan



Ground Floor



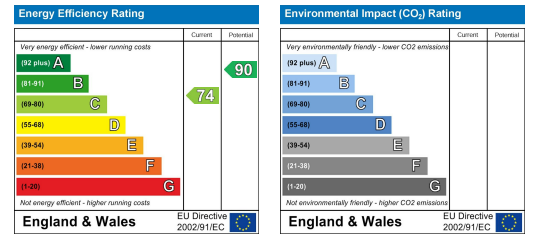
First Floor



Area Map

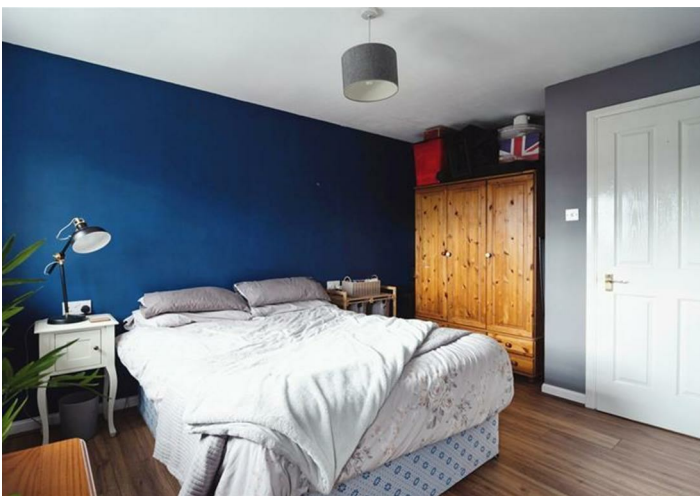


Energy Efficiency Graph



Total floor area 59.2 m² (637 sq.ft.) approx

This floor plan is for illustrative purposes only. It is not drawn to scale. Any measurements, floor areas (including any total floor area), openings and orientation are approximate. No details are guaranteed, they cannot be relied upon for any purpose and they do not form part of any agreement. No liability is taken for any error, omission or misstatement. A party must rely upon its own inspection(s). Powered by www.focalagent.com



These particulars, whilst believed to be accurate are set out as a general outline only for guidance and do not constitute any part of an offer or contract. Intending purchasers should not rely on them as statements of representation of fact, but must satisfy themselves by inspection or otherwise as to their accuracy. No person in this firm's employment has the authority to make or give any representation or warranty in respect of the property.