



GRIFFIN
THE PROPERTY PEOPLE



Sachfield Drive

Chafford Hundred, Grays, RM16 6QJ

Asking price £450,000

**** WELL PRESENTED **** TWO EN-SUITES **** GUIDE PRICE £450,000 - £475,000
**** TWO RECEPTION ROOMS ****

We are delighted to offer for sale this THREE BEDROOM semi detached town house situated within this popular road of Chafford Hundred and being ideally located for access to Grays Town Centre, Grays train station which is on the Southend to London Fenchurch Street C2C line, and the A13 trunk road.

The property itself benefits from having two en-suites, plus family bathroom, garage with parking in front of it, and a kitchen/diner. This really is a nice property, and only by viewing can the accommodation on offer be fully appreciated and we would therefore recommend viewing as soon as possible so not to miss out. Call the sales team today.....

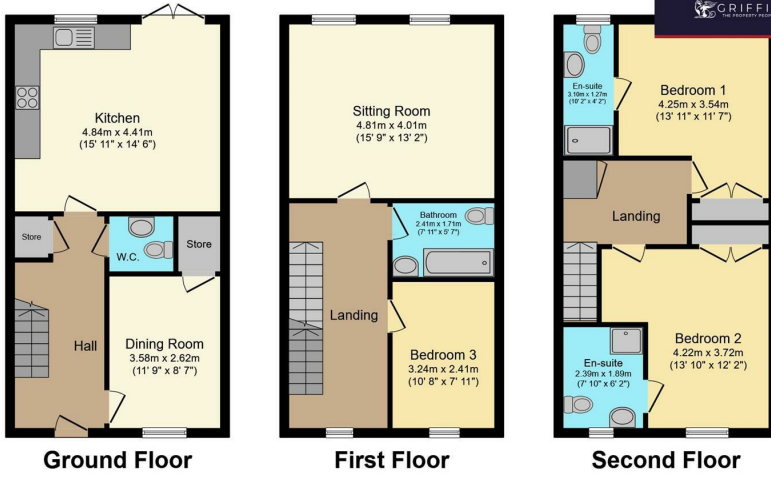
- Semi Detached
- Two En-Suites
- Garage
- Two Reception Rooms
- 3 Storey Living
- Well Presented
- Viewing Advised
- EPC: TBC

Viewing

Please contact our Grays Sales Office on 01375 397872 if you wish to arrange a viewing appointment for this property or require further information.



Floor Plan



Ground Floor

First Floor

Second Floor

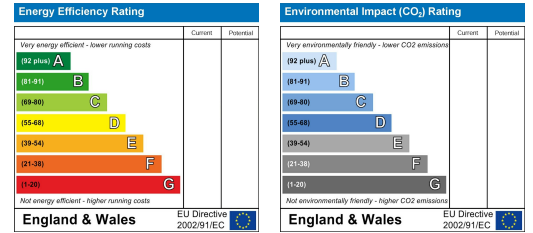
Total floor area 137.9 m² (1,485 sq.ft.) approx

This floor plan is for illustrative purposes only. It is not drawn to scale. Any measurements, floor areas (including any total floor area), openings and orientation are approximate. No details are guaranteed, they cannot be relied upon for any purpose and they do not form part of any agreement. No liability is taken for any error, omission or misstatement. A party must rely upon its own inspection(s). Powered by www.focalagent.com

Area Map



Energy Efficiency Graph



These particulars, whilst believed to be accurate are set out as a general outline only for guidance and do not constitute any part of an offer or contract. Intending purchasers should not rely on them as statements of representation of fact, but must satisfy themselves by inspection or otherwise as to their accuracy. No person in this firm's employment has the authority to make or give any representation or warranty in respect of the property.