



GRIFFIN

THE PROPERTY PEOPLE



Bridge Court, Bridge Road , Grays, RM17 6BW

Asking price £145,000

**** OUTSKIRTS OF TOWN **** DOUBLE BEDROOM **** CASH BUYERS ONLY ****
BALCONY ****

Griffin are delighted to offer for sale this ONE BEDROOM upper floor flat ideally situated for access to Grays Town Centre, the train station which is on the Southend to London Fenchurch Street C2C line, and bus routes.

The property itself benefits from a good sized kitchen, balcony, parking to the rear and UPVC double glazing. Only by viewing can the size of this property be fully appreciated and we would recommend viewing at your earliest convenience.

Call the sales team today....

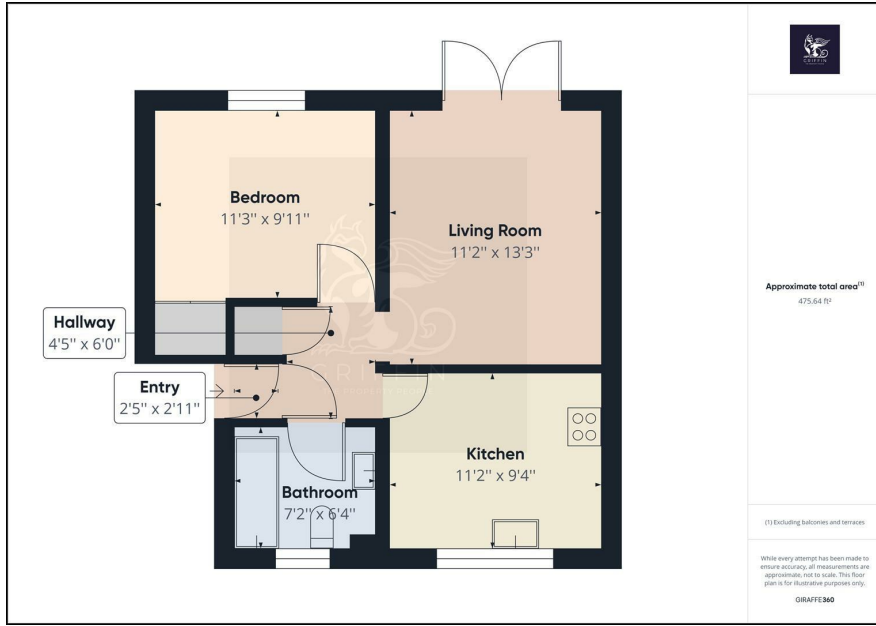
Viewing

Please contact our Grays Sales Office on 01375 397872 if you wish to arrange a viewing appointment for this property or require further information.

- First Floor
- Double Bedroom
- Great Location
- Viewing Advised
- Balcony
- Bathroom
- Nice Kitchen
- EPC: C77



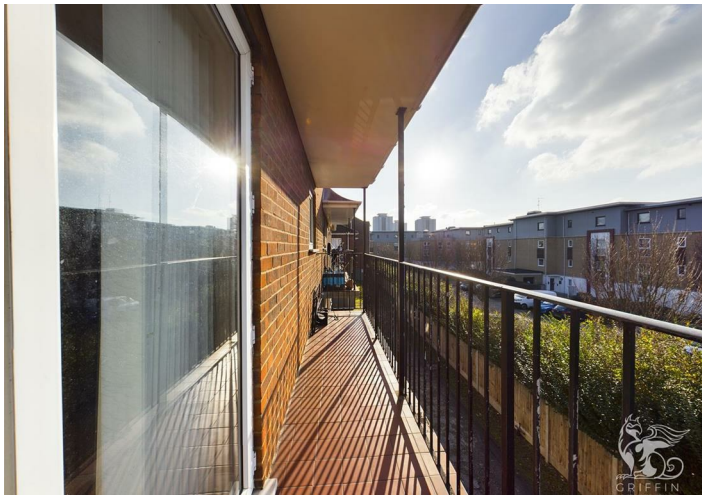
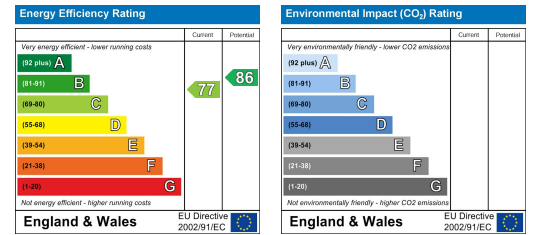
Floor Plan



Area Map



Energy Efficiency Graph



These particulars, whilst believed to be accurate are set out as a general outline only for guidance and do not constitute any part of an offer or contract. Intending purchasers should not rely on them as statements of representation of fact, but must satisfy themselves by inspection or otherwise as to their accuracy. No person in this firm's employment has the authority to make or give any representation or warranty in respect of the property.