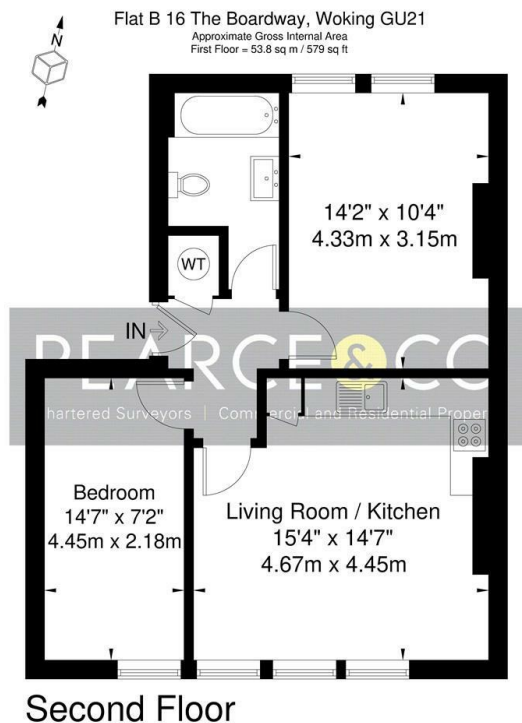




## Woking

**£1,450 PCM**

- Well presented throughout
- Appliances included
- Town Centre location
- Must be seen
- Two double bedrooms
- Modern fitted bathroom
- Unfurnished
- Modern fitted kitchen
- Spacious throughout
- Available EARLY AUGUST



Compass Property Projects © 2022  
Illustration for identification purposes only.  
measurements are approximate, not to scale.

A spacious town centre apartment with a modern interior throughout, providing a contemporary open plan living space, Kitchen with appliances, spacious lounge/dining room, two double bedrooms, modern bathroom. Situated moments from Woking mainline station and Town Centre. Available EARLY AUGUST Unfurnished.

## Viewings

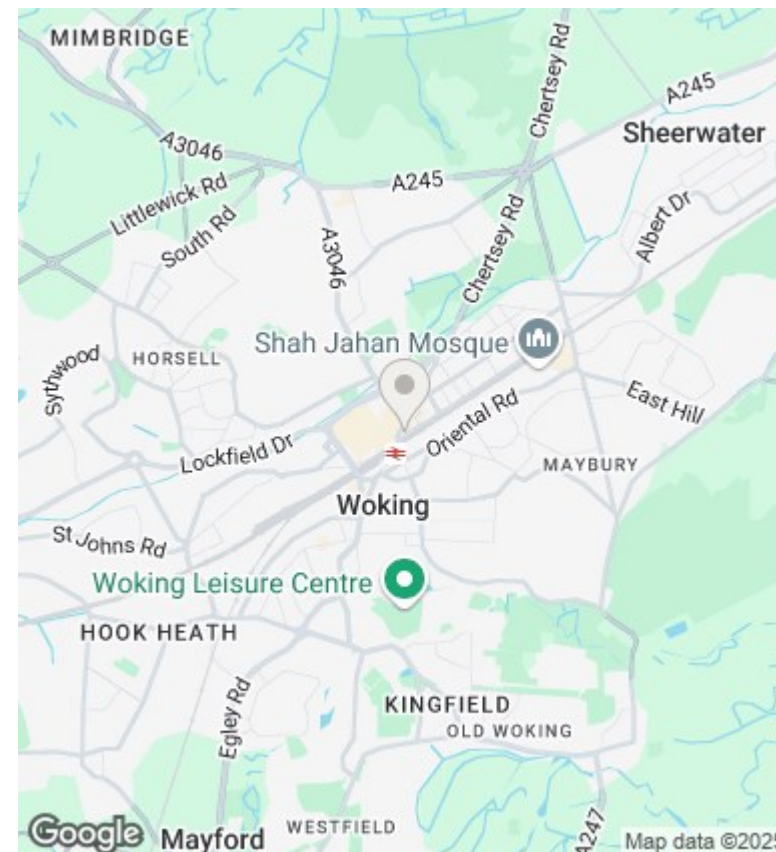
Viewings by arrangement only. Call 01932 582501 to make an appointment.

## Council Tax Band

C

## EPC Rating:

D



Energy Efficiency Rating		
	Current	Potential
Very energy efficient - lower running costs		
(92-plus) <b>A</b>		<b>85</b>
(81-91) <b>B</b>		
(69-80) <b>C</b>	<b>68</b>	
(55-68) <b>D</b>		
(39-54) <b>E</b>		
(21-38) <b>F</b>		
(1-20) <b>G</b>		
Not energy efficient - higher running costs		
England & Wales		EU Directive 2002/91/EC