



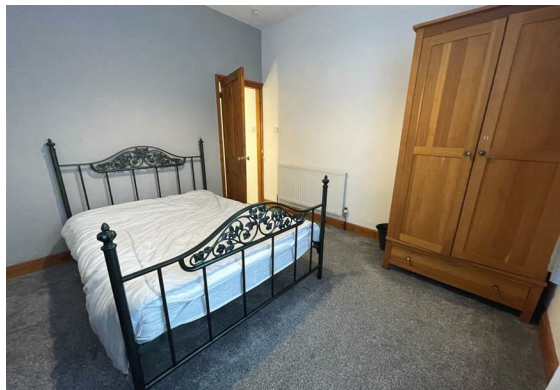
**17 Wilberforce Road**  
**, Leicester, LE3 0GT**  
**£1,000 PCM**



## 17 Wilberforce Road

, Leicester, LE3 0GT

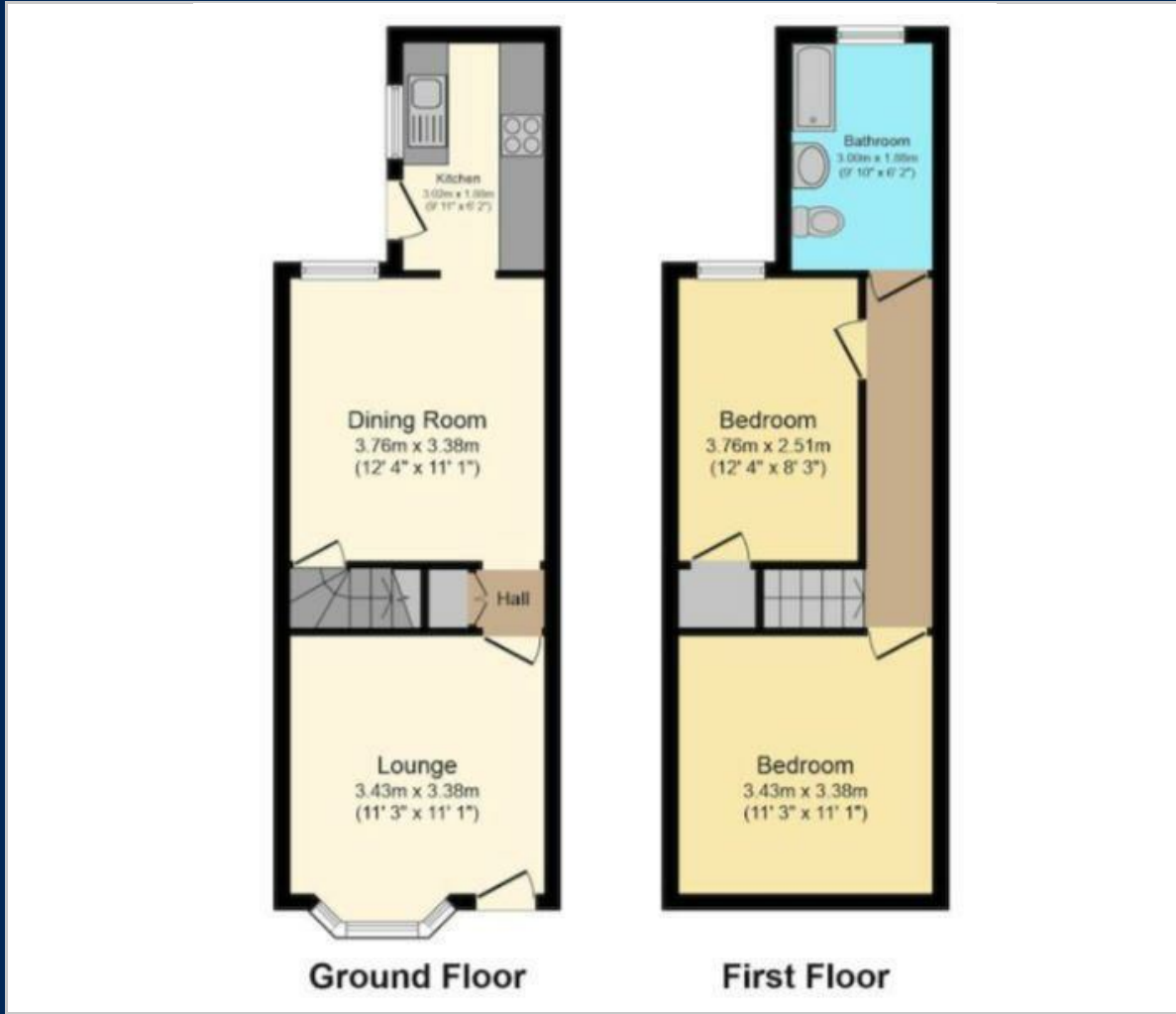
Two bedroom well presented furnished property located close to the City Centre, Leicester Royal Infirmary and DeMontfort University. The property comprises two reception rooms, kitchen, two bedrooms and bathroom with shower.







## Floor Plan



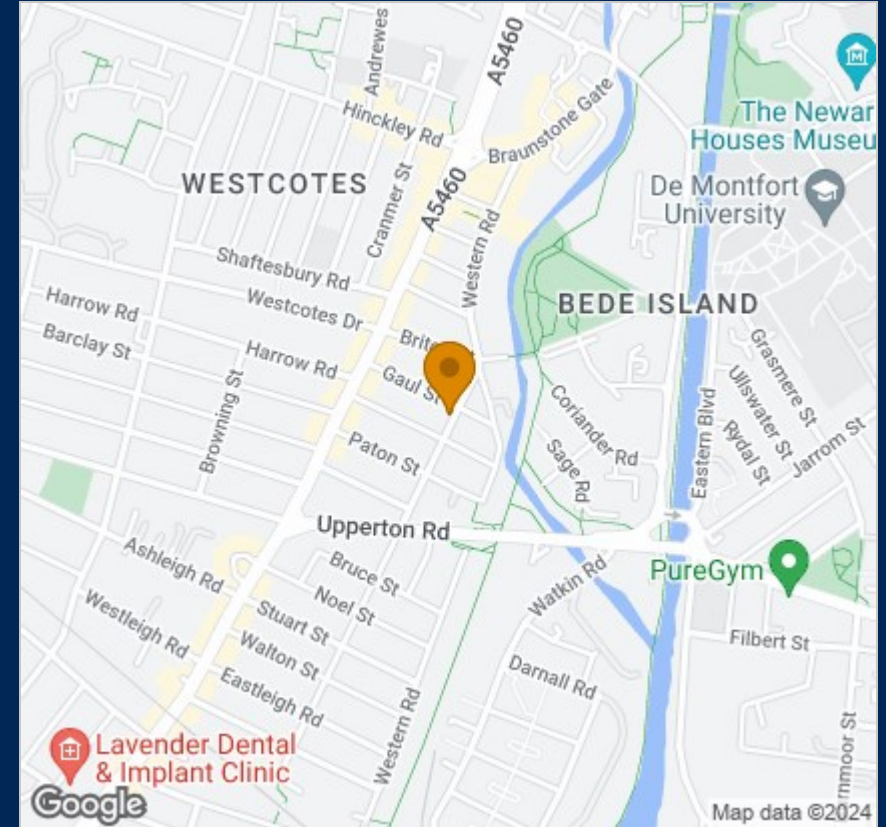
## Viewing

Please contact our Priya Properties Office on 0116 255 9950 if you wish to arrange a viewing appointment for this property or require further information.

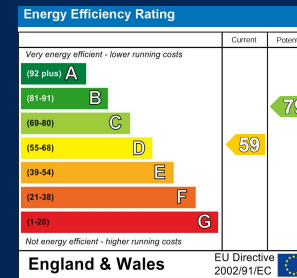
These particulars, whilst believed to be accurate are set out as a general outline only for guidance and do not constitute any part of an offer or contract. Intending purchasers should not rely on them as statements of representation of fact, but must satisfy themselves by inspection or otherwise as to their accuracy. No person in this firm's employment has the authority to make or give any representation or warranty in respect of the property.

78 Hinckley Road, Leicester, LE3 0RD  
 Tel: 0116 255 9950 Email: [findmeahome@priyaproperties.co.uk](mailto:findmeahome@priyaproperties.co.uk) [www.findmeahome@priyaproperties.co.uk](http://www.findmeahome@priyaproperties.co.uk)

## Area Map



## Energy Efficiency Graph



79