



2B Tichborne Street
, Leicester, LE2 0NQ
Guide Price £105,000

2B Tichborne Street

, Leicester, LE2 0NQ

Ideal for Investors or first time buyers! Spacious one bedroom ground floor flat with its own entrance located close to Leicester Train Station and the City Centre. The accommodation comprises entrance hall, one bedroom, open plan kitchen and lounge and shower room.

[Parking](#)

[Tenancy](#)

[Leasehold Details](#)

[Council Tax Band](#)

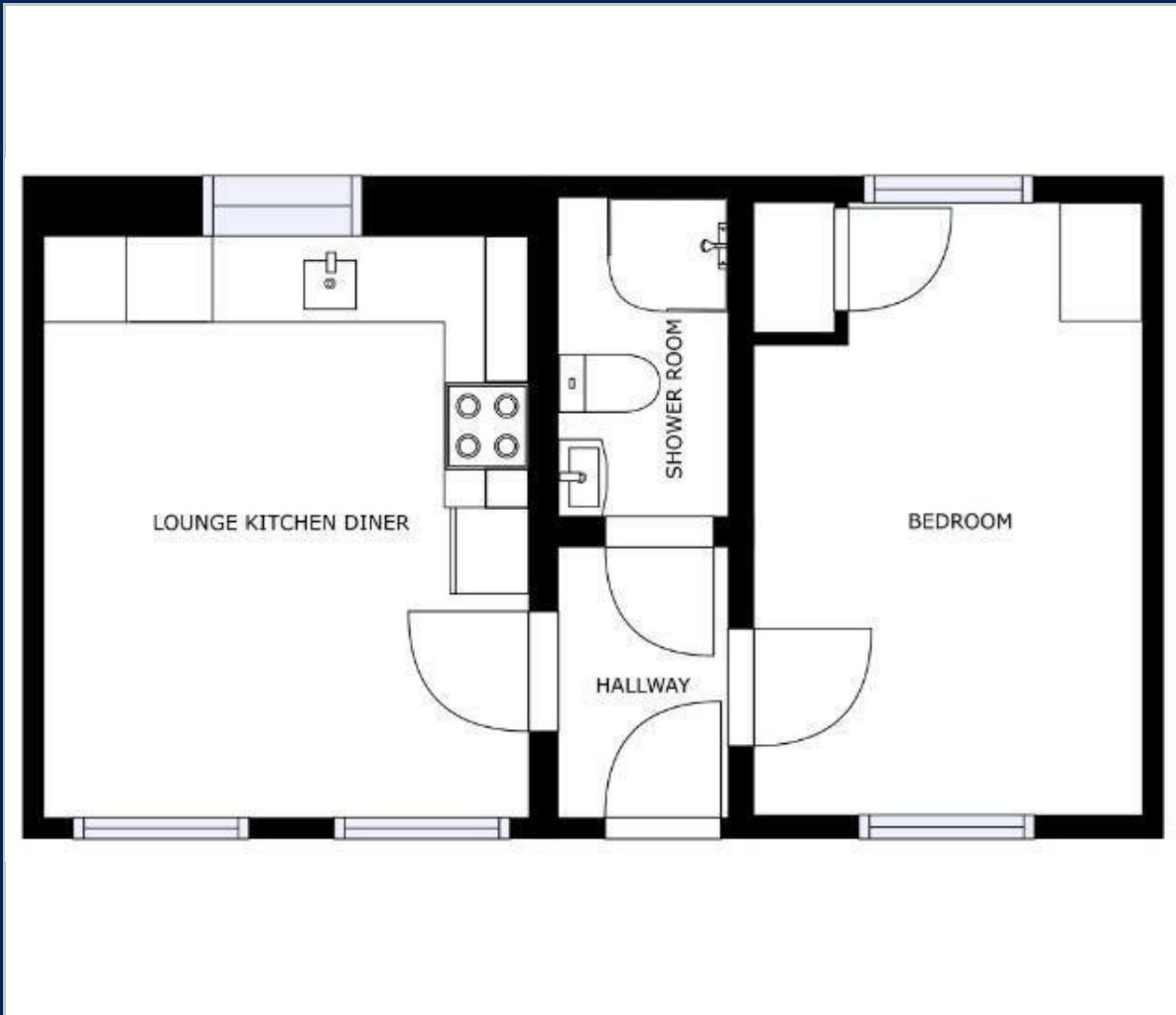
[Important Notice](#)

[Measurements and Other Information](#)





Floor Plan



Viewing

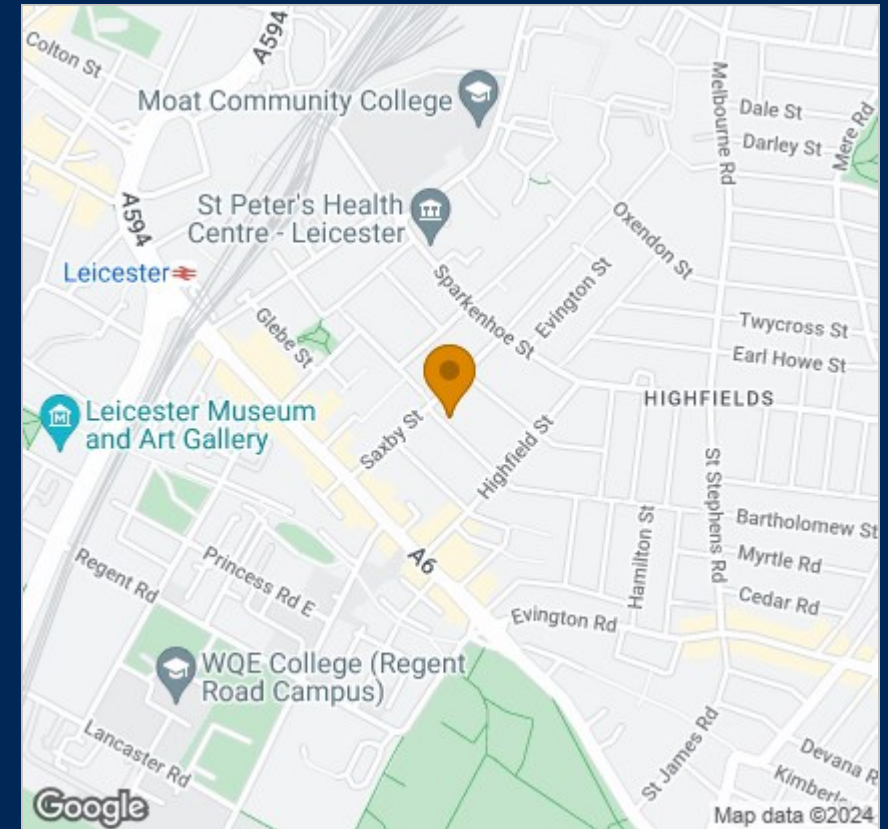
Please contact our Priya Properties Office on 0116 255 9950 if you wish to arrange a viewing appointment for this property or require further information.

These particulars, whilst believed to be accurate are set out as a general outline only for guidance and do not constitute any part of an offer or contract. Intending purchasers should not rely on them as statements of representation of fact, but must satisfy themselves by inspection or otherwise as to their accuracy. No person in this firm's employment has the authority to make or give any representation or warranty in respect of the property.

78 Hinckley Road, Leicester, LE3 0RD

Tel: 0116 255 9950 Email: findmeahome@priyaproperties.co.uk www.findmeaproperty@priyaproperties.co.uk

Area Map



Energy Efficiency Graph

