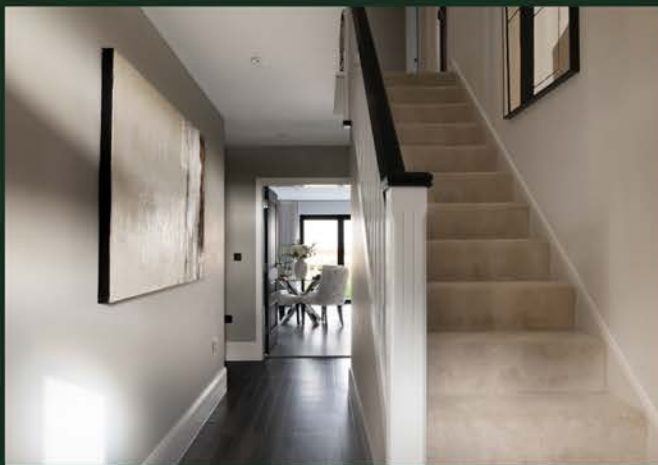




The Amberley, Beaufort Court

Guide Price £1,275,000





“

A delightful and substantial 6 bedroom home set across three floors. A new build by Pure Homes. The property provides six bedrooms, four bathrooms and an excellent location. This property also boasts an integral garage in addition to a separate garage with versatile usable room above which would make an excellent home office or home gym.

”



Beaufort Court is a luxurious & unique courtyard development of 20 high specification 4, 5 & 6 bedroom new homes of exceptional architectural merit. The properties enjoy delightful countryside views, being crafted with quality and sustainability in mind and located within a short drive or walk to the southwest of Chester City Centre.

Chester is a beautiful city, rich in history and packed full of amenities. However, there is a shortage of premium quality new build property, so the introduction of such an individual and exclusive development, currently still under construction, is very much welcome.



Pure Homes have built up an enviable and deserved reputation for excellence in all aspects of residential construction. It is encouraging to see a local company consistently deliver such quality, thought and care in their work.



“

The property enjoys a delightful countryside view, being crafted with quality and sustainability in mind. Whether it's the Nolte German kitchen or the Porcelanosa tiling, every inch of this home has been thought through with a no-compromise approach to quality. The results really are extremely impressive.

”





Beaufort Court enjoys a prime location just south of Chester City Centre, near local shops and the picturesque riverside area. Chester offers a mix of shopping, leisure amenities like restaurants, theatres and the famous racecourse. The area provides excellent schools.

Residents benefit from easy access into Chester and optimal transport links - just 1 mile from Chester Business Park with quick motorway access and a direct train to London from Chester station.

Beyond the convenience, Beaufort Court allows homeowners to enjoy Chester's impressive sporting facilities on the River Dee, cultural attractions, charming surroundings and popular dining/nightlife scene.





“

As more people are working from home, Pure Homes have created luxury, dedicated home working units for every house type within their development. The live/work unit comes with multiply uses and additional parking. This secondary additional space offers the flexibility to create a home gym, or pilates/yoga studio for example.. your choice is endless!

”

Need to know

- Separate on site home working units with every house type
- Vaulted glazed feature to the front elevation
- Combination of Air Source and Under Floor Heating
- SMART heating control
- Luxury modern kitchen design with quartz worktops complete with integrated boiling water tap
- 'Porcelanosa' fully tiled bathroom & en-suites with porcelain tiles



GROUND FLOOR

| | |
|---------------------|----------------|
| KITCHEN / DINING | 10.30m x 5.35m |
| UTILITY | 2.00m x 4.70m |
| LIVING ROOM | 3.70m x 5.95m |
| STUDY / HOME OFFICE | 2.90m x 3.90m |
| GARAGE | 2.85m x 5.65m |



FIRST FLOOR

| | |
|----------------|---------------|
| MASTER BEDROOM | 4.90m x 5.20m |
| EN-SUITE | 1.20m x 3.15m |
| DRESSER | 2.90m x 3.55m |
| BEDROOM 2 | 3.70m x 4.65m |
| EN-SUITE | 1.20m x 3.70m |
| BEDROOM 3 | 4.90m x 3.55m |
| BEDROOM 4 | 3.10m x 3.55m |
| BATHROOM | 2.40m x 3.55m |



SECOND FLOOR

| | |
|-------------------|---------------|
| BEDROOM 5 | 3.30m x 8.90m |
| EN-SUITE | 2.70m x 1.95m |
| BED 6 / PLAY ROOM | 3.65m x 9.35m |

Interested?

sales@humphreysofchester.co.uk
01244 401 100

humphreysofchester.co.uk

Humphreys
ESTATES & LETTINGS



humphreysofchester.co.uk