



Plot 33, Beeston View

Guide Price £340,000





“

Tucked away in the charming village of Tattenhall in Cheshire, you'll find Beeston View (CH3 9DD) - a stunning development that takes convenient but country living to new heights. This rare gem perfectly blends the peaceful countryside vibe with the convenience of being just a short stroll from the quaint village centre. And let's not forget the picturesque Shropshire Union canal nearby, adding a touch of natural beauty to the whole setting.

”



The properties at Beeston View are truly one-of-a-kind, where every property has been expertly crafted to stand out from the other. The Eaton, a real showstopper in this development, offers a traditional layout seamlessly combined with an airy, spacious feel. atmosphere.

Step inside, and you're met with an open plan living, kitchen, and dining area that oozes both style and functionality. A separate WC downstairs adds an extra dose of convenience. Upstairs, you'll find three bedrooms, with bedroom one with its own en-suite as well as a family bathroom.



“

Beeston View is an absolute gem, with an array of top-notch amenities right on your doorstep. From the picturesque Tattenhall marina to the famous Cheshire Ice Cream Farm, this place is a playground for those seeking unique experiences. Excellent schools and a well-stocked village shop just add to the community's incredible appeal.

”





“

If you're interested in learning more about this exceptional development, reach out to Megan Fowles at Humphreys of Chester to schedule a viewing. Don't miss your chance to experience the ideal family living at Beeston View.

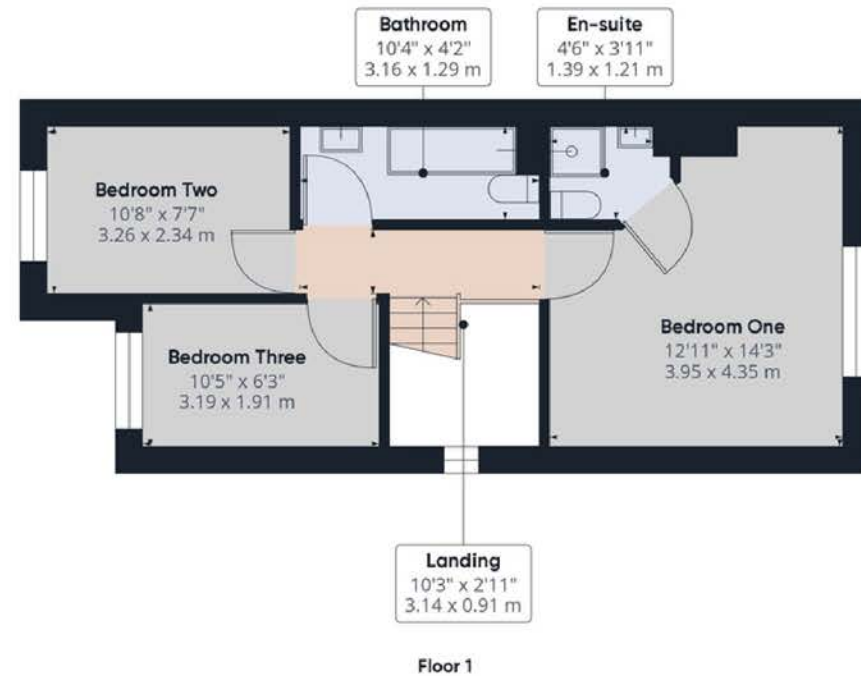
”

Need to know

- Spacious Design
- Rural Development
- Countryside Location
- SMART heating control
- Two bathrooms and downstairs WC
- Off Road Parking
- Great buyer incentives
- Shared ownership options



Ground Floor



Floor 1

Interested?

sales@humphreysofchester.co.uk
01244 401 100

humphreysofchester.co.uk



humphreysofchester.co.uk