



Plot 47, Beeston View

Guide Price £369,950





“

Tucked away in the charming village of Tattenhall in Cheshire, you'll find Beeston View (CH3 9DD) - a stunning development that takes convenient but country living to new heights. This rare gem perfectly blends the peaceful countryside vibe with the convenience of being just a short stroll from the quaint village centre. And let's not forget the picturesque Shropshire Union canal nearby, adding a touch of natural beauty to the whole setting.

”



The properties at Beeston View are truly one-of-a-kind, where every property has been expertly crafted to stand out from the other. The Huxley, a real showstopper in this development, offers a traditional layout seamlessly combined with an airy, spacious feel.

Step inside, and you're met with a welcoming hallway leading through to open-plan living, dining, kitchen. The home seamlessly flows upstairs where there are three double bedrooms the main bedroom having an en-suite as well as a family bathroom.



“

Beeston View is an absolute gem, with an array of top-notch amenities right on your doorstep. From the picturesque Tattenhall marina to the famous Cheshire Ice Cream Farm, this place is a playground for those seeking unique experiences. Excellent schools and a well-stocked village shop just add to the community's incredible appeal.

”





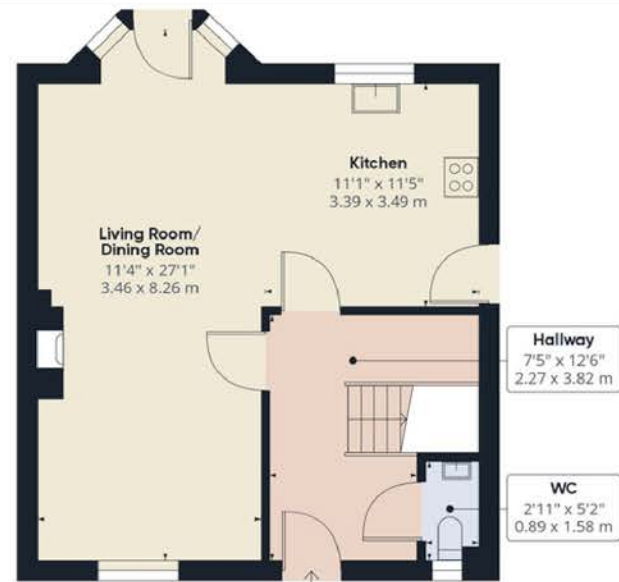
“

If you're interested in learning more about this exceptional development, reach out to Megan Fowles at Humphreys of Chester to schedule a viewing. Don't miss your chance to experience the ideal family living at Beeston View.

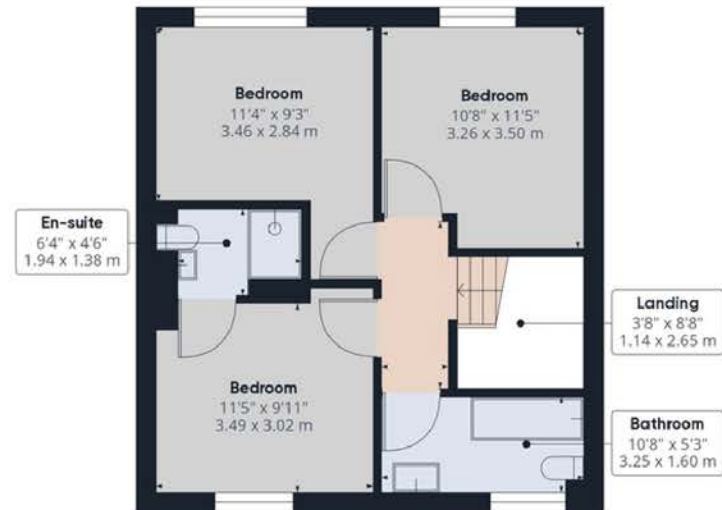
”

Need to know

- Spacious Design
- Rural Development
- Countryside Location
- SMART heating control
- Two bathrooms and downstairs WC
- Off Road Parking
- Great buyer incentives
- Shared ownership purchase



Ground Floor Building 6



Floor 1 Building 6

Interested?

sales@humphreysofchester.co.uk
01244 401 100

humphreysofchester.co.uk



humphreysofchester.co.uk