



Plot 30, Beeston View

Guide Price £142,500

Shared Ownership





“

Tucked away in the charming village of Tattenhall in Cheshire, you'll find Beeston View (CH3 9DD) - a stunning development that takes convenient but country living to new heights. This rare gem perfectly blends the peaceful countryside vibe with the convenience of being just a short stroll from the quaint village centre. And let's not forget the picturesque Shropshire Union canal nearby, adding a touch of natural beauty to the whole setting.

”



The properties at Beeston View are truly one-of-a-kind, where every property has been expertly crafted to stand out from the other. The Eddisbury, a real showstopper in this development, offers a traditional layout seamlessly combined with an airy, spacious feel.

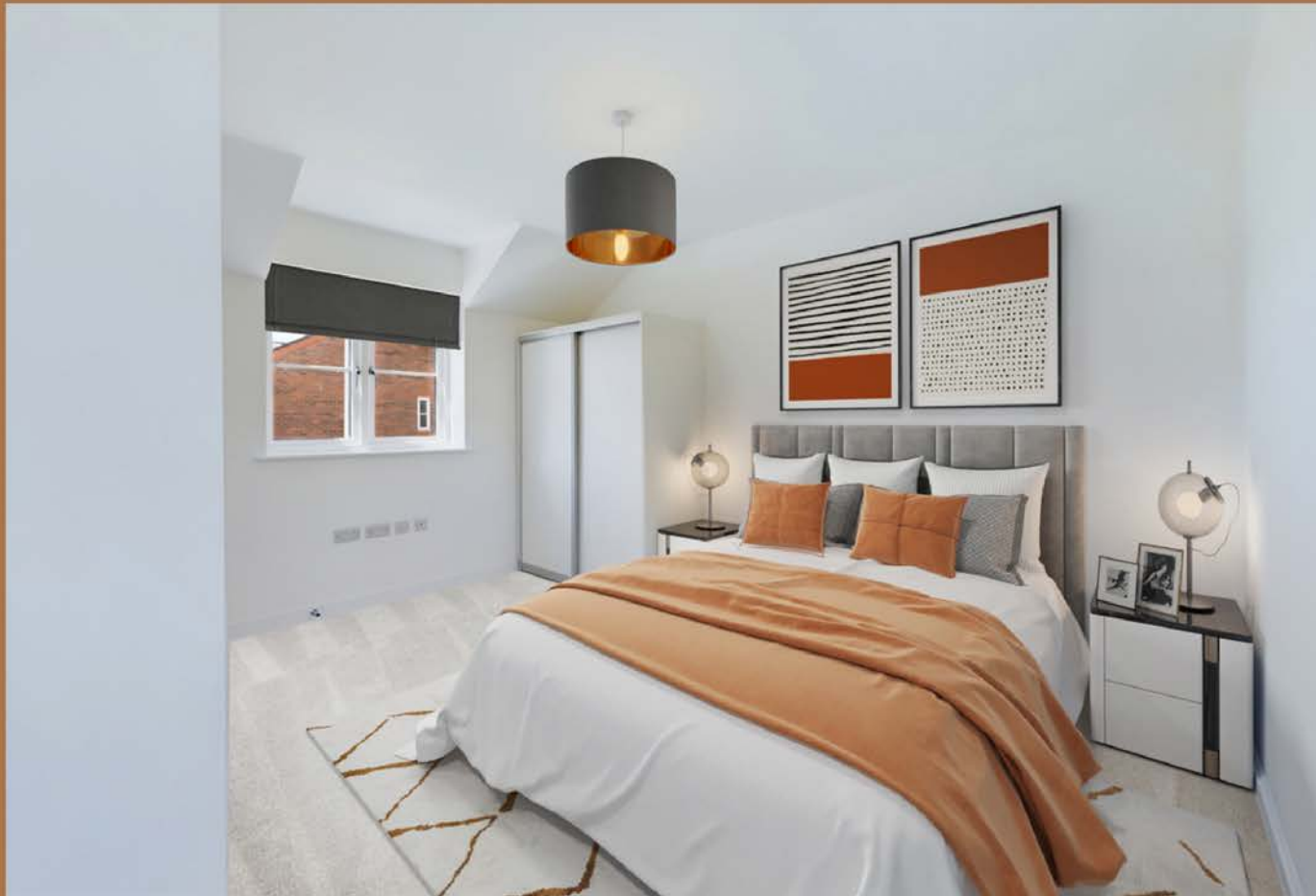
Step inside, and you're met with a welcoming hallway leading through to an intimate living area, with 2 glass doors symmetrically aside from each other to the large fireplace, which provides access to the rear garden. A separate kitchen area with space for a dining table sits on the other side of the home, before continuing upstairs where you will find two double bedrooms and a family shower room.



“

Beeston View is an absolute gem, with an array of top-notch amenities right on your doorstep. From the picturesque Tattenhall marina to the famous Cheshire Ice Cream Farm, this place is a playground for those seeking unique experiences. Excellent schools and a well-stocked village shop just add to the community's incredible appeal.

”





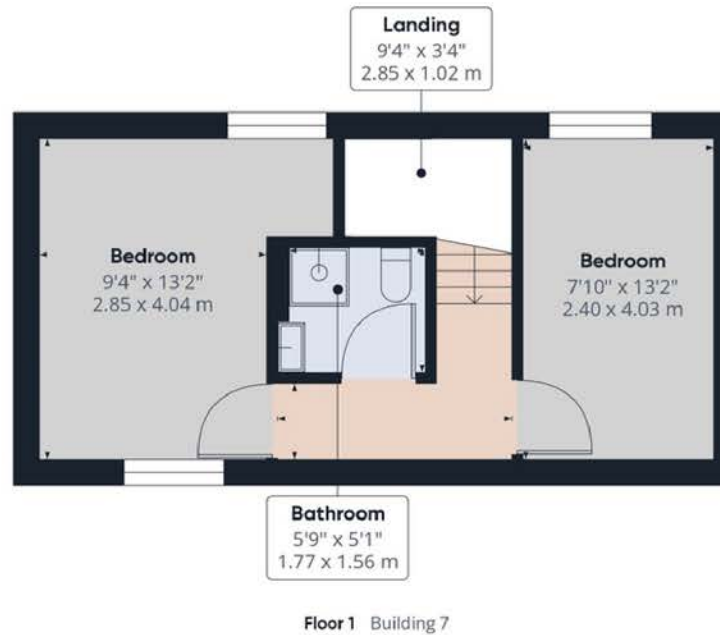
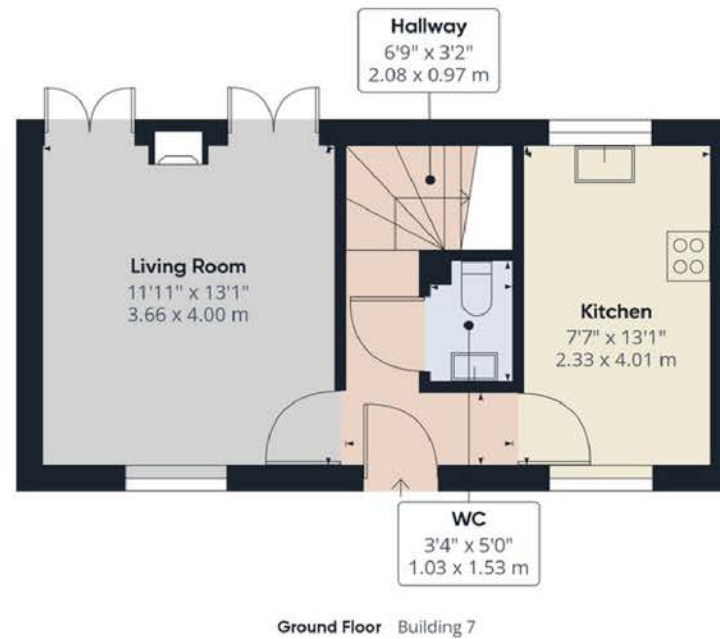
“

If you're interested in learning more about this exceptional development, reach out to Megan Fowles at Humphreys of Chester to schedule a viewing. Don't miss your chance to experience the ideal family living at Beeston View.

”

Need to know

- Spacious Design
- Rural Development
- Countryside Location
- SMART heating control
- Two bathrooms and downstairs WC
- Off Road Parking
- Great buyer incentives
- Shared ownership options



Interested?

sales@humphreysofchester.co.uk
01244 401 100

humphreysofchester.co.uk



humphreysofchester.co.uk