



30 Meadow Road, Netherfield – NG4 2FR

Guide Price **£180,000**



30 Meadow Road

Netherfield, Nottingham

Guide price £180,000-£190,000. Three-storey terraced home within walking distance of Netherfield's shops, bus & rail links. Ideal for first-time buyer or investor.

Council Tax band: A

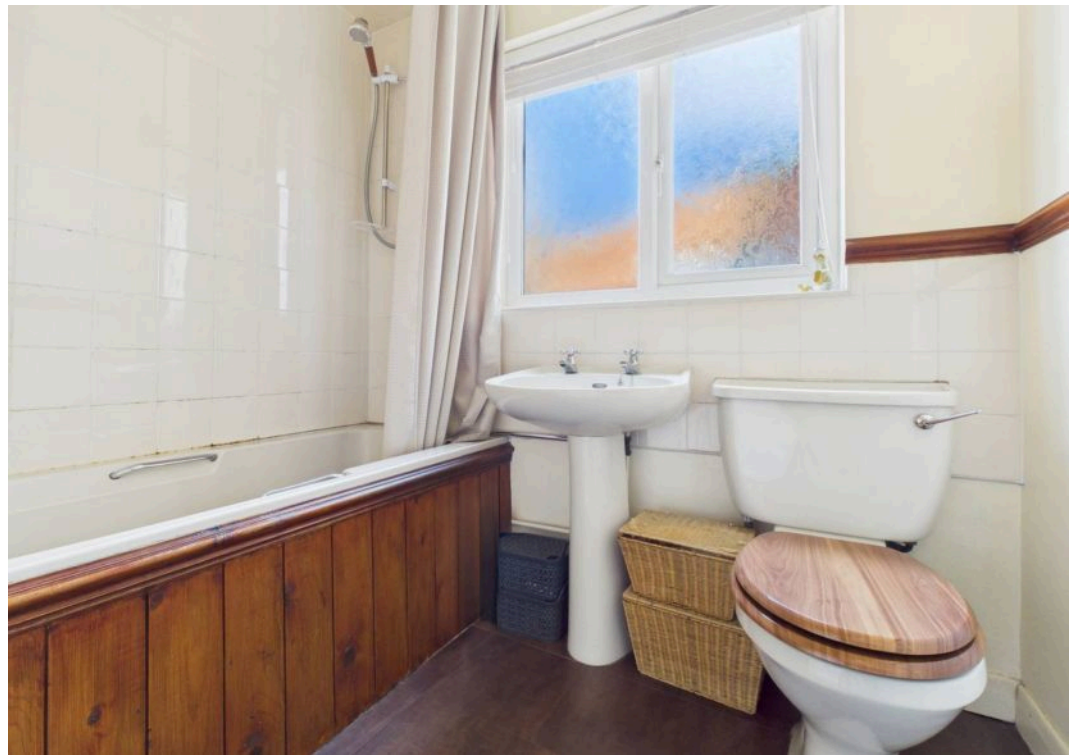
Tenure: Freehold

EPC Energy Efficiency Rating: D

EPC Environmental Impact Rating:

- Three-storey terraced house
- Within walking distance of Netherfield's shops, transport services and shops plus Victoria Retail Park
- Ideal as a first-time purchase or a buy-to-let investment
- Bright and airy lounge with feature gas stove fireplace
- Well-equipped kitchen with integrated cooking appliances and space for a table and chairs
- Downstairs bathroom with three-piece suite and electric shower over the bath
- Three generously sized double bedrooms (over two floors)
- Bright and spacious main bedroom with wood-effect flooring
- Gas central heating with combination boiler
- Beautiful rear paved courtyard garden with archway, ornamental pond and established planting







Floor 0



Floor 1



Floor 2

Approximate total area⁽¹⁾

94.3 m²

1015 ft²

Reduced headroom

7.3 m²

78 ft²

(1) Excluding balconies and terraces

Reduced headroom

Below 1.5 m/5 ft

Calculations reference the RICS IPMS 3C standard. Measurements are approximate and not to scale. This floor plan is intended for illustration only.

GIRAFFE360



David James Estate Agents

376 Carlton Hill, Carlton - NG4 1JA

0115 987 8957 • carlton@david-james.com • www.david-james.com

These particulars are produced in good faith and are set out as a general guide only. Measurements are approximate and floor plans are for illustrative purposes only. Services have not been tested. We have established professional relationships with third-party suppliers for the provision of services to Clients, details of which can be found on the property listing page on our website.