



4 Forester Grove, Carlton – NG4 1FR

Guide Price £290,000

DavidJames
the estate agent



4 Forester Grove

Carlton, Nottingham

Detached, extended and renovated family home offered to the market with no chain! Modern and spacious interiors incorporating open plan living, 3 double beds and a wonderful enclosed rear garden.

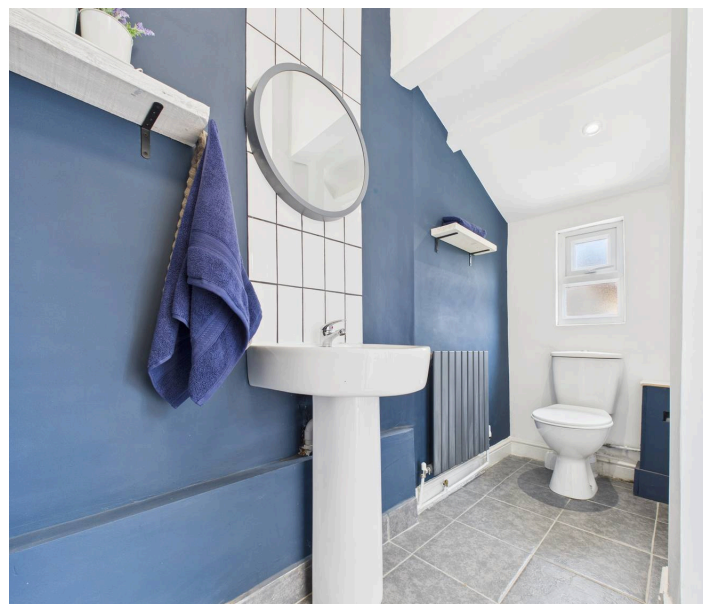
Council Tax band: B

Tenure: Freehold

EPC Energy Efficiency Rating: D

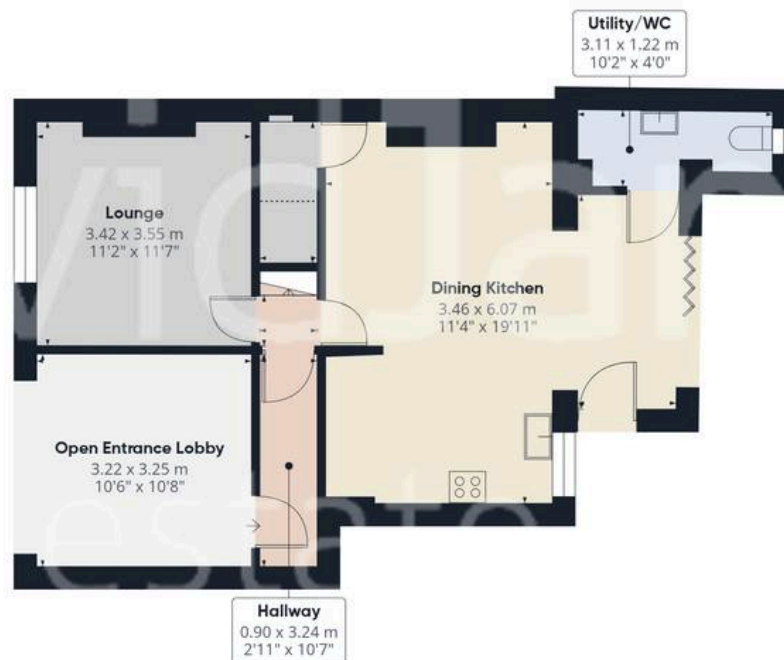
EPC Environmental Impact Rating: D

- Renovated and extended detached family home
- Offered to the market with no upward chain
- Ideally positioned for convenient access to Carlton's nearby amenities, supermarkets, schools and frequent bus services
- Bright and spacious lounge
- Stunning open plan dining kitchen with bi-fold doors with an adjoining utility/WC
- Newly-fitted kitchen with integrated cooking appliances
- Three first floor double bedrooms (main bedroom with an en-suite shower room)
- Stylish and modern family bathroom with a feature freestanding bath
- Wonderful low-maintenance garden with lawn and patio seating space
- Open entrance/carport to the front









Floor 0

Approximate total area⁽¹⁾

106.1 m²

1142 ft²

Reduced headroom

0.8 m²

9 ft²



Floor 1

(1) Excluding balconies and terraces

Reduced headroom

..... Below 1.5 m/5 ft

While every attempt has been made to ensure accuracy, all measurements are approximate, not to scale. This floor plan is for illustrative purposes only.

Calculations are based on RICS IPMS 3C standard.

GIRAFFE360



David James Estate Agents

376 Carlton Hill, Carlton - NG4 1JA

0115 987 8957 • carlton@david-james.com • www.david-james.com

These particulars are produced in good faith and are set out as a general guide only. Measurements are approximate and floor plans are for illustrative purposes only. Services have not been tested. We have established professional relationships with third-party suppliers for the provision of services to Clients, details of which can be found on the property listing page on our website.