



28 Bulcote Drive, Burton Joyce – NG14 5AX

Guide Price **£375,000**

DavidJames
the estate agent



28 Bulcote Drive

Burton Joyce, Nottingham

Well-presented and extended 2 double bed bungalow ideal for those seeking single-storey village living! Open lounge and dining kitchen, modern bathroom and a SE-facing garden with studio/outbuilding.

Council Tax band: C

Tenure: Freehold

EPC Energy Efficiency Rating: D

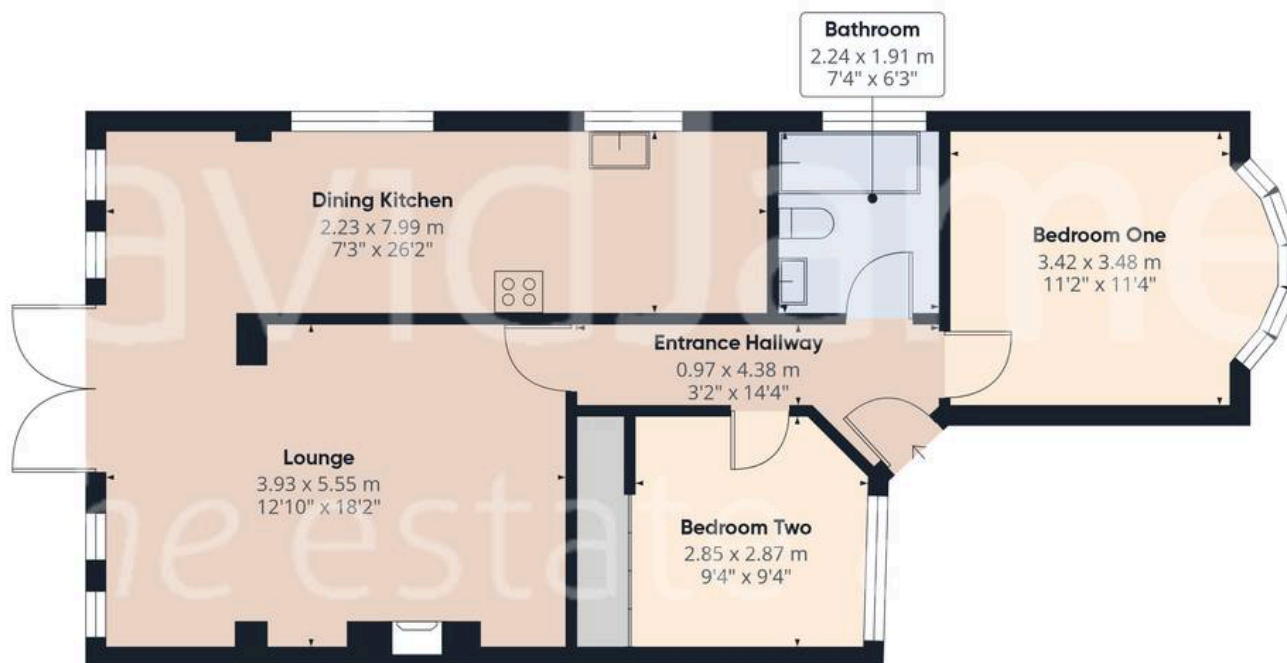
EPC Environmental Impact Rating:

- Beautifully presented and extended detached bungalow
- Ideal for those seeking the benefits of single-storey living
- Good sized lounge with access to the dining/kitchen and French doors to the rear garden
- Stunning kitchen with shaker style base and wall units plus integrated appliances
- Two good sized double bedrooms (main bedroom with fitted wardrobes)
- Modern bathroom with a three-piece suite (including a Jacuzzi-style bath)
- Gas central heating with Hive controls
- Superb southerly-facing garden with multiple seating areas
- Versatile studio/outbuilding with power/lighting and electric heater (an ideal working space)
- Ample driveway with space for three vehicles, EV charger and single garage









Floor 0 Building 1



Floor 0 Building 2

Approximate total area⁽¹⁾

86.7 m²

933 ft²

(1) Excluding balconies and terraces

While every attempt has been made to ensure accuracy, all measurements are approximate, not to scale. This floor plan is for illustrative purposes only.

Calculations are based on RICS IPMS 3C standard.

GIRAFFE360



David James Estate Agents

376 Carlton Hill, Carlton - NG4 1JA

0115 987 8957 • carlton@david-james.com • www.david-james.com

These particulars are produced in good faith and are set out as a general guide only. Measurements are approximate and floor plans are for illustrative purposes only. Services have not been tested. We have established professional relationships with third-party suppliers for the provision of services to Clients, details of which can be found on the property listing page on our website.