



2



2



1



D

DavidJames
the estate agent

Bailey Street, Netherfield, Nottingham, NG4 2NL

Guide Price £140,000

About This Property

GUIDE PRICE £140,000 - £160,000 Welcome to this two-bedroom mid-terrace home nestled in a cul-de-sac in Netherfield. Perfect for first-time buyers or landlords seeking to expand their portfolios, this property offers excellent access to bus/train links and the nearby Victoria Retail Park.

Upon entering, you are welcomed by a hallway leading to two reception rooms. The first reception room, currently used as a lounge, features an electric fire set against a grey brick chimney breast and provides access to the first floor accommodation. The second reception room has a feature large fire surround with electric fire and a window overlooking the rear garden. The compact kitchen comes equipped with a four-burner gas cooker, electric oven, grill, and stainless steel extractor, along with space for several appliances and access to the rear garden.

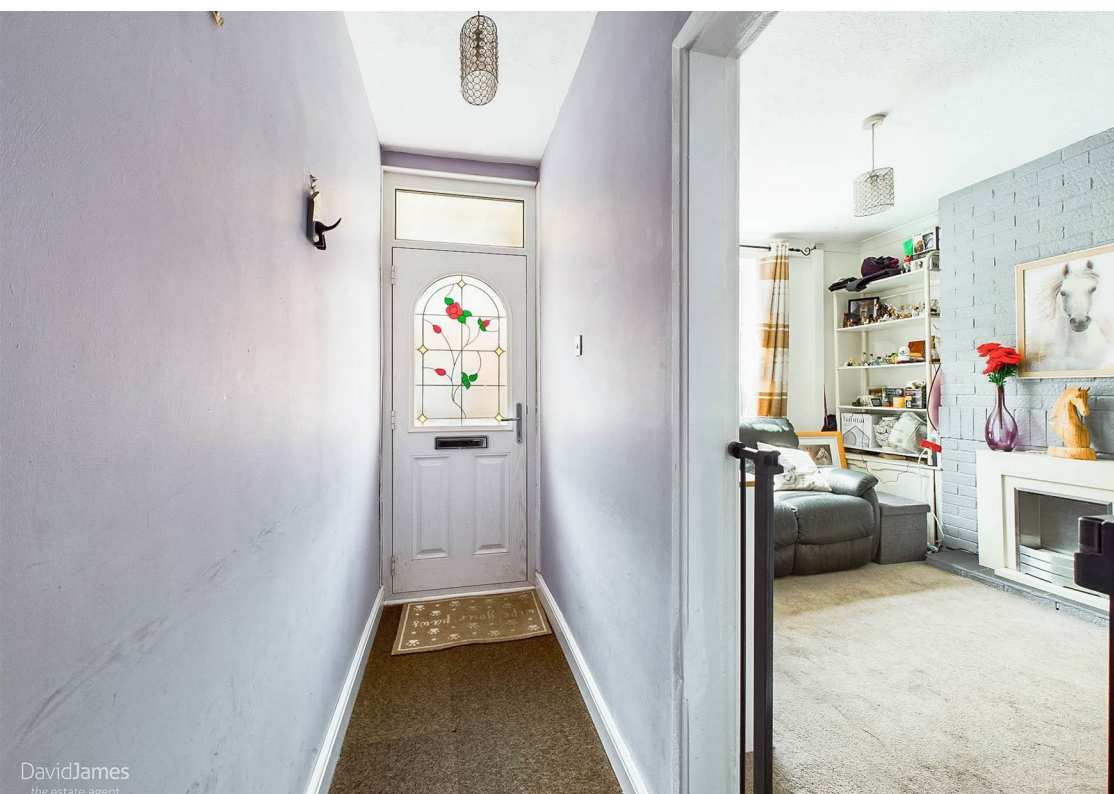
Upstairs, you will find two double bedrooms with the second bedroom offering a lovely view of the rear garden. The family bathroom is generously sized and includes a three piece suite with a shower over the bath.

The rear garden features an initial concrete patio area, a good-sized artificial lawn and a further patio area at the end of the garden, all enclosed by wooden fencing on three sides.



- Traditional mid-terrace house
- Ideal for first time buyers or investors
- Cul-de-sac location
- Lounge with feature fire
- Separate versatile sitting/dining room
- Two double bedrooms
- Generous rear garden area
- Good access to bus and train links
- Close to Victoria Retail Park
- On-street parking available



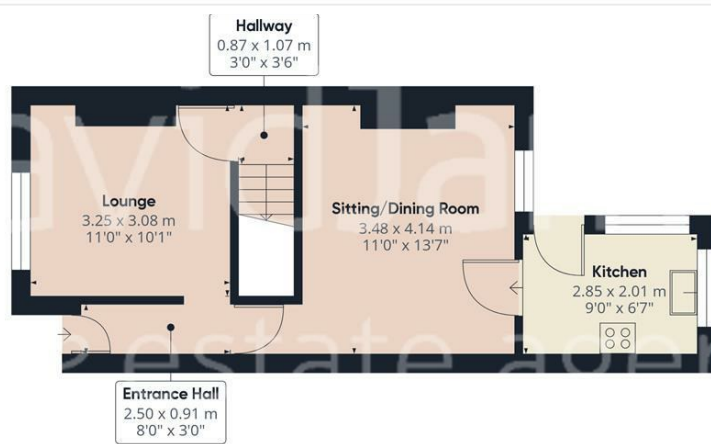


DavidJames
the estate agent

DavidJames
the estate agent

DavidJames
the estate agent

DavidJames
the estate agent



Floor 0



Floor 1

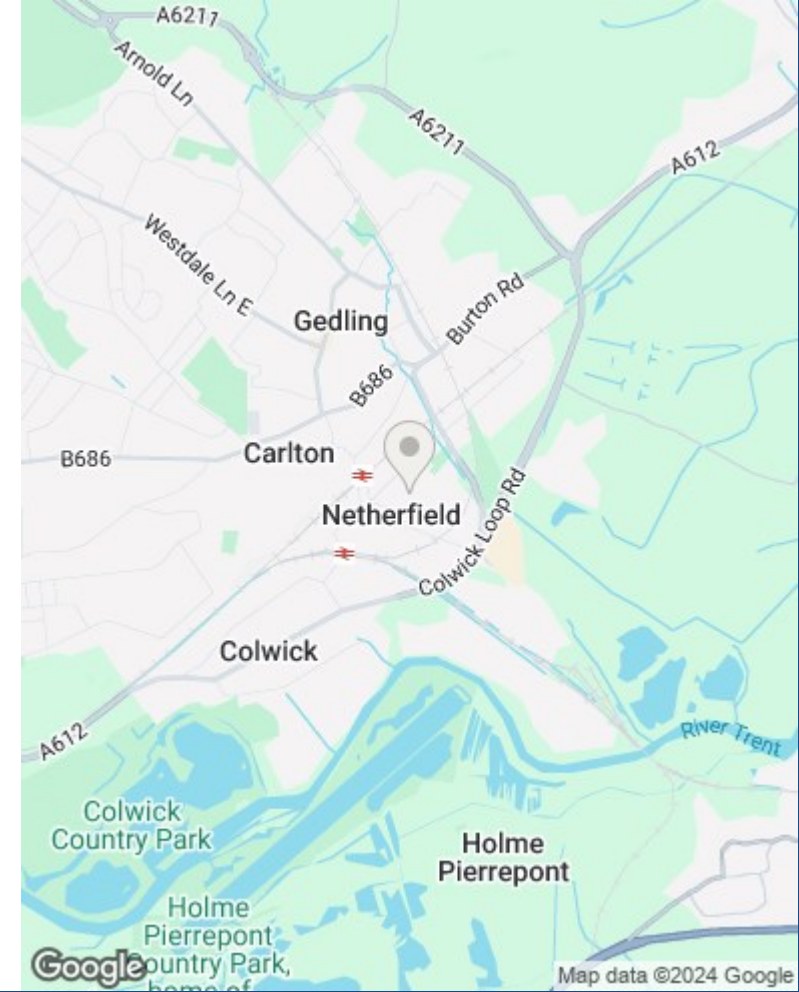


Approximate total area**
70.69 m²
760.9 ft²

(1) Excluding balconies and terraces

While every attempt has been made to ensure accuracy, all measurements are approximate, not to scale. This floor plan is for illustrative purposes only.

GIRAFFE360



These particulars are produced in good faith, are set out as a general guide only and do not constitute any part of a contract. No person in the employment of David James Estate Agents Ltd has any authority to make any representation whatsoever in relation to the property. All services, together with electrical fittings or fitted appliances have NOT been tested. All the measurements given in the details are approximate. Floor plans are for illustrative purposes only and are not drawn to scale. The position and size of doors, windows, appliances and other features are approximate only. The photographs of this property have been taken with a 10mm wide-angle lens. No responsibility can be accepted for any loss or expense incurred in viewing. If you have a property to sell you may wish to take advantage of our free valuation service. David James Estate Agents have established professional relationships with third-party suppliers for the provision of services to Clients. As remuneration for this professional relationship, the agent receives referral commission from the third-party company. David James Estate Agents receives the following commission from each third party supplier on a per referral basis: W A Barnes Ltd: £60 including VAT. All Moves UK Ltd: 18% including VAT of the invoice total (£107 including VAT average). MoveWithUs Limited: £188 including VAT (average).

Council Tax Band: A
Gedling Borough Council
Freehold

DavidJames
the estate agent

David James Estate Agents
317 Carlton Hill, Nottingham, NG4 1GL
t: 0115 987 8957 e: carlton@david-james.com

