



DavidJames
the estate agent

Meadow Cottages, Netherfield, Nottingham, NG4 2FE

Guide Price £150,000

About This Property

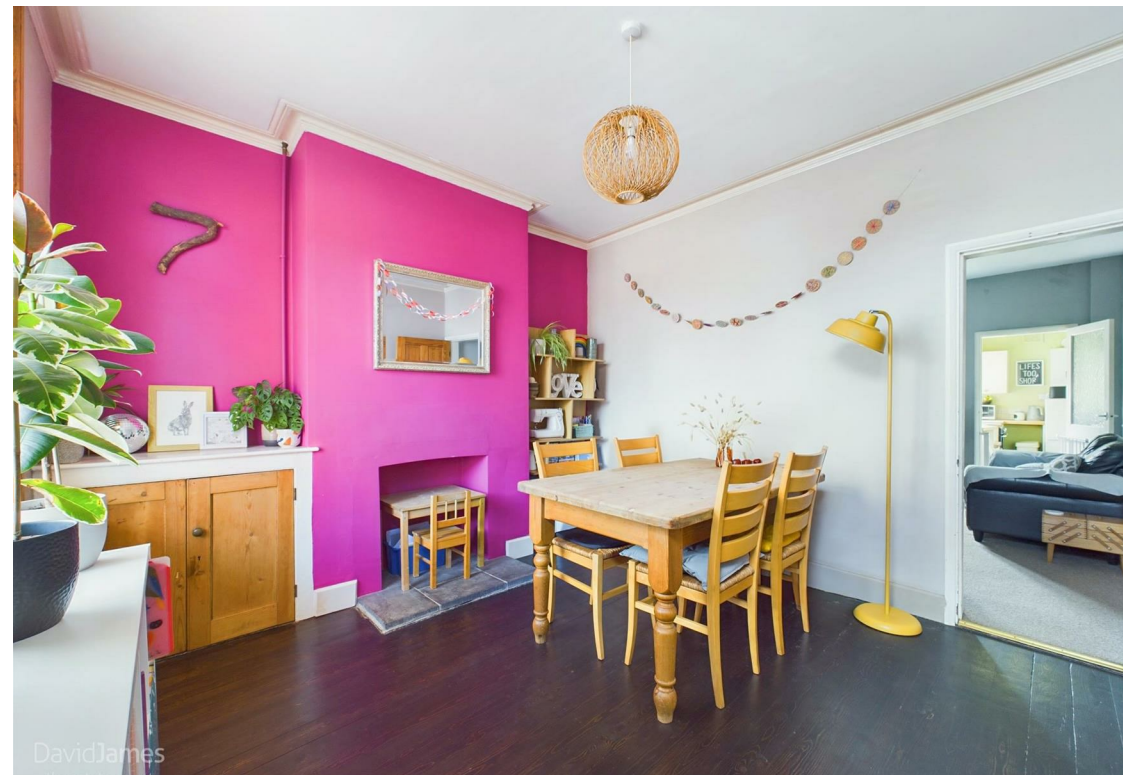
Guide Price £150,000- £160,000. Welcome to this inviting three-storey terraced house which presents a superb opportunity for first-time buyers eager to step onto the property ladder! This home is perfectly situated just a stone's throw from the conveniences of Netherfield's shops, bus routes and train services. Ideal for those looking for a simple commute!

Upon entering, you'll find two versatile reception rooms. The front room is currently set up as a dining room whilst the rear serves as a comfortable lounge with French doors to the garden. The fitted kitchen is well-equipped with ample space for freestanding appliances and is also home to the recently installed Navien boiler, complete with a wireless thermostat.

The first floor houses two bedrooms, including the main bedroom which boasts two fitted wardrobes. Ascending to the top floor, you'll find a generous double bedroom, a true highlight of the home. This spacious room offers useful storage in the eaves, maximising the available space.

The first floor complementing bathroom then features a three-piece suite with a shower over the bath.

Outside, the property offers a low-maintenance south-westerly facing garden, an ideal spot for relaxing outdoors and enjoying the sunshine.



- Three-storey terraced house
- Well-presented throughout
- A stone's throw from Netherfield's amenities and transport services
- A perfect first-time purchase
- Two reception rooms (lounge and dining room)
- Fitted kitchen with space for freestanding appliances
- Three bedrooms
- Bathroom with a three-piece suite
- Recently replaced Navien boiler
- Low-maintenance south-westerly facing garden



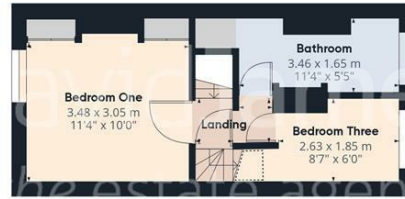
DavidJames
the estate agent

DavidJames
the estate agent

DavidJames
the estate agent



Floor 0



Floor 1



Floor 2

DavidJames
The estate agent

Approximate total area⁽¹⁾

72.49 m²
780.25 ft²

Reduced headroom

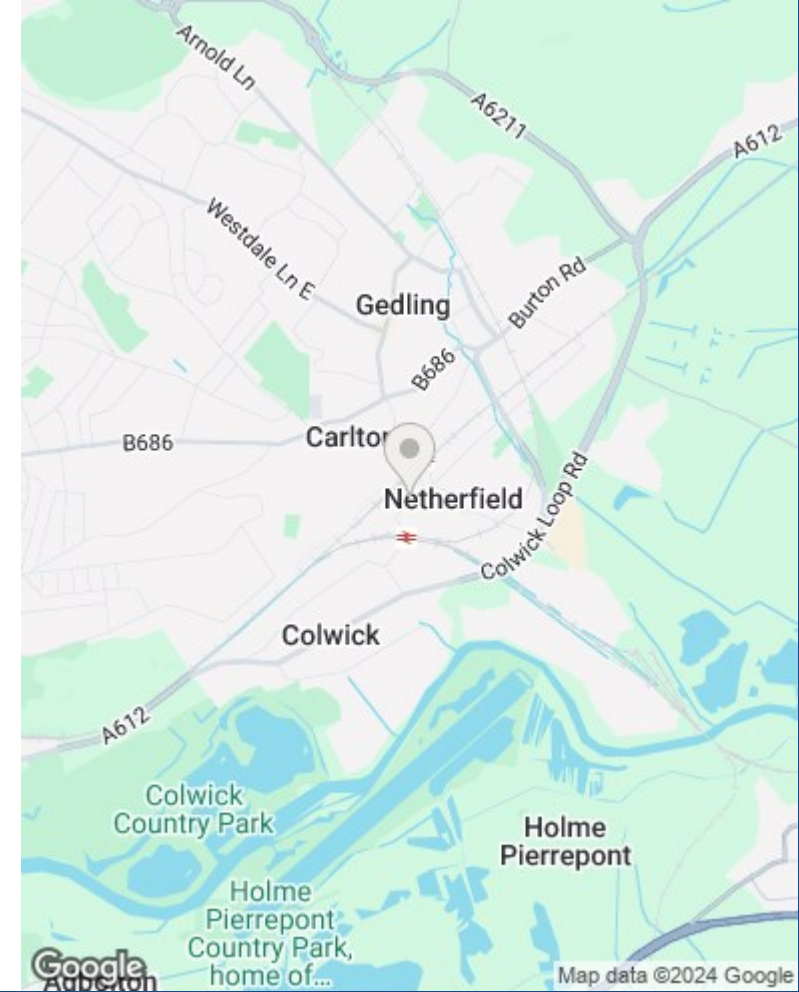
0.4 m²
4.33 ft²

(1) Excluding balconies and terraces

Reduced headroom
(below 1.5m/4.92ft)

While every attempt has been made to ensure accuracy, all measurements are approximate, not to scale. This floor plan is for illustrative purposes only.

GIRAFFE360



These particulars are produced in good faith, are set out as a general guide only and do not constitute any part of a contract. No person in the employment of David James Estate Agents Ltd has any authority to make any representation whatsoever in relation to the property. All services, together with electrical fittings or fitted appliances have NOT been tested. All the measurements given in the details are approximate. Floor plans are for illustrative purposes only and are not drawn to scale. The position and size of doors, windows, appliances and other features are approximate only. The photographs of this property have been taken with a 10mm wide-angle lens. No responsibility can be accepted for any loss or expense incurred in viewing. If you have a property to sell you may wish to take advantage of our free valuation service. David James Estate Agents have established professional relationships with third-party suppliers for the provision of services to Clients. As remuneration for this professional relationship, the agent receives referral commission from the third-party company. David James Estate Agents receives the following commission from each third party supplier on a per referral basis: W A Barnes Ltd: £60 including VAT. All Moves UK Ltd: 18% including VAT of the invoice total (£107 including VAT average). MoveWithUs Limited: £188 including VAT (average).

Council Tax Band: A
Gedling Borough Council
Freehold

DavidJames
the estate agent

David James Estate Agents
317 Carlton Hill, Nottingham, NG4 1GL
t: 0115 987 8957 e: carlton@david-james.com

