



2



1



1



D

DavidJames
the estate agent

Harrington Close, Gedling, Nottingham, NG4 2QZ

Guide Price £280,000

About This Property

GUIDE PRICE £280,000 - £290,000. Perfect for those seeking the benefits of single-storey living, this detached bungalow is offered to the market with no upward chain and sits in a cul-de-sac just a short distance from both Carlton and Gedling's amenities!

Upon entering, you are welcomed by an initial hall that leads into a generous lounge featuring a decorative focal point fireplace. The large conservatory extends the living area, offering a versatile space currently set up as a combined sitting and dining area with delightful views and access to the south-easterly facing garden. This garden is thoughtfully designed for low maintenance and includes a timber outbuilding that serves perfectly as additional storage or a summerhouse.

The dining kitchen is then equipped with a range of fitted units and includes a freestanding cooker and dishwasher. Further space is available for a fridge/freezer, with the current American-style appliance open for negotiation. Accessed at the end of the conservatory, a handy utility area then provides space and plumbing for a washing machine.

Sleeping accommodation consist of two well-proportioned double bedrooms, with the main bedroom boasting fitted wardrobes for added convenience. The complementing bathroom is fitted with a four-piece suite including a separate shower cubicle.

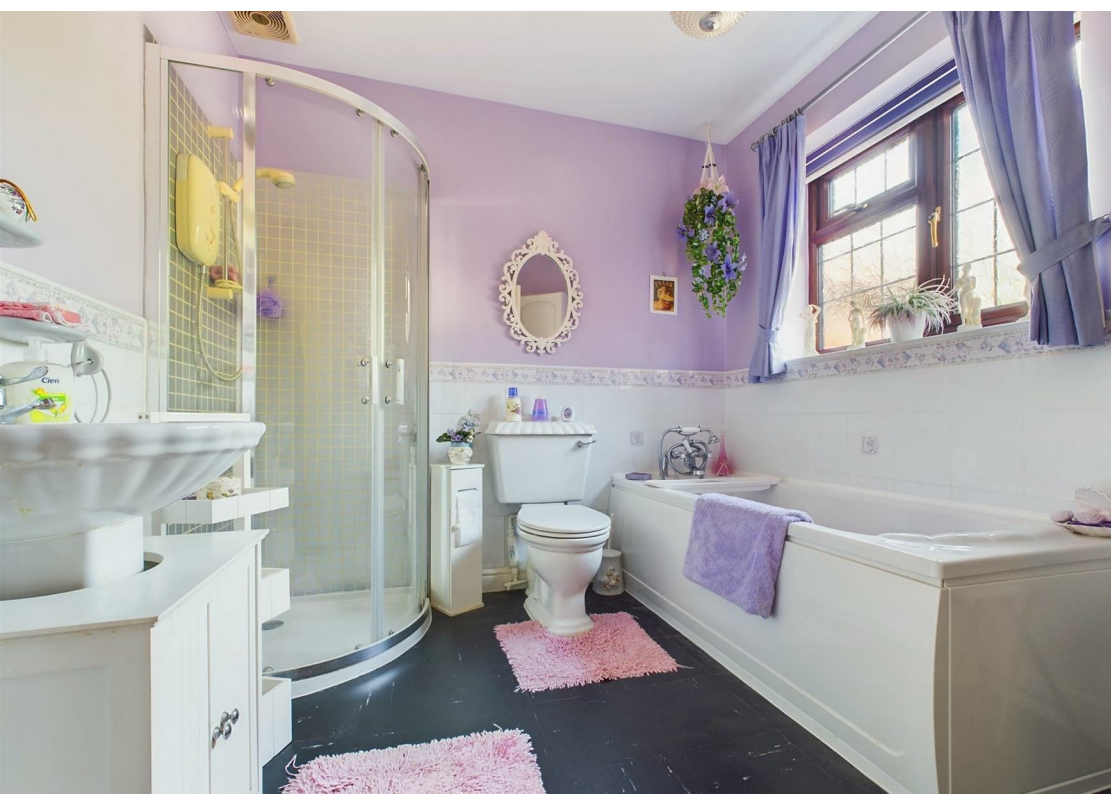
Additional features include double glazing and a gas central heating system powered by a recently serviced and annually maintained Worcester boiler located in the kitchen.

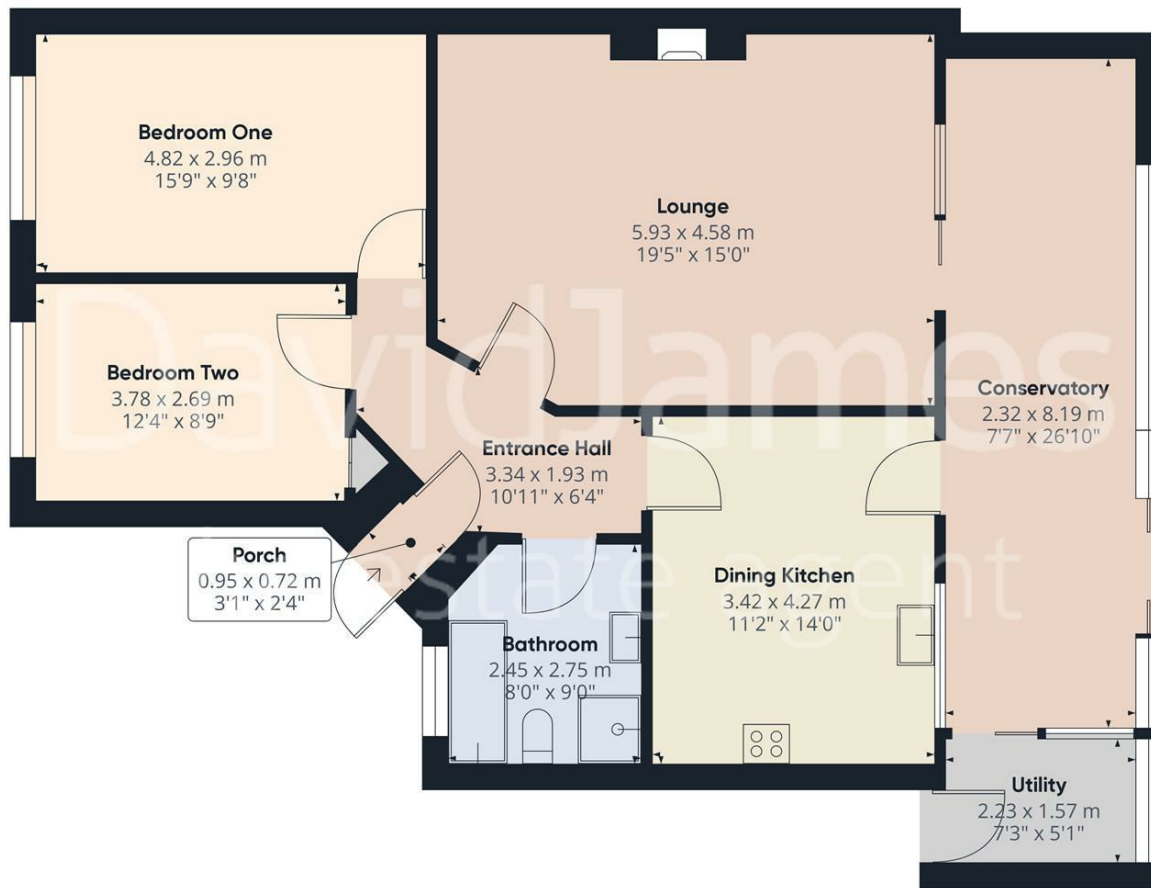
Externally to the front, the driveway offers ample off-street parking for multiple vehicles and is enhanced by built-in soffit lighting.



- Detached bungalow
- Cul-de-sac location close to both Gedling and Carlton's amenities
- Offered to the market with no upward chain
- Perfect for those seeking single-storey living
- Spacious lounge with an adjoining large conservatory
- Dining kitchen with an included cooker and dishwasher
- Two double bedrooms
- Bathroom with a four-piece suite including a separate shower cubicle
- Generous south-easterly facing low-maintenance garden
- Driveway provides parking for multiple vehicles





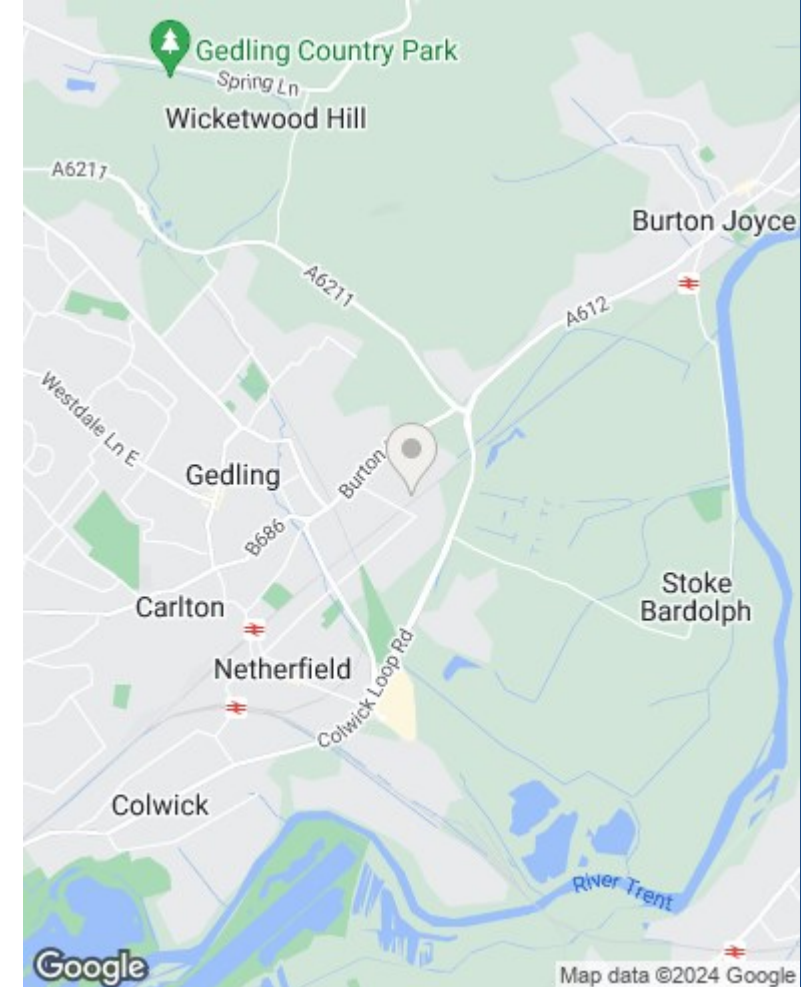


Approximate total area**
102.8 m²
1106.55 ft²

(1) Excluding balconies and terraces

While every attempt has been made to ensure accuracy, all measurements are approximate, not to scale. This floor plan is for illustrative purposes only.

GIRAFFE360



These particulars are produced in good faith, are set out as a general guide only and do not constitute any part of a contract. No person in the employment of David James Estate Agents Ltd has any authority to make any representation whatsoever in relation to the property. All services, together with electrical fittings or fitted appliances have NOT been tested. All the measurements given in the details are approximate. Floor plans are for illustrative purposes only and are not drawn to scale. The position and size of doors, windows, appliances and other features are approximate only. The photographs of this property have been taken with a 10mm wide-angle lens. No responsibility can be accepted for any loss or expense incurred in viewing. If you have a property to sell you may wish to take advantage of our free valuation service. David James Estate Agents have established professional relationships with third-party suppliers for the provision of services to Clients. As remuneration for this professional relationship, the agent receives referral commission from the third-party company. David James Estate Agents receives the following commission from each third party supplier on a per referral basis: W A Barnes Ltd: £60 including VAT. All Moves UK Ltd: 18% including VAT of the invoice total (£107 including VAT average). MoveWithUs Limited: £188 including VAT (average).

Council Tax Band: C
Gedling Borough Council
Freehold

DavidJames
the estate agent

David James Estate Agents
317 Carlton Hill, Nottingham, NG4 1GL
t: 0115 987 8957 e: carlton@david-james.com

