



 4

 1

 1

 D

DavidJames
the estate agent

Dovedale Road, Bakersfield, Nottingham, NG3 7GS

Guide Price £280,000

About This Property

GUIDE PRICE £280,000 - £300,000 This extended semi-detached home is located in the ever popular Bakersfield and offers an ideal setting for family living. The property is conveniently positioned within easy access to local shopping facilities, a range of schools for all ages and benefits from frequent bus services nearby to Nottingham City Centre.

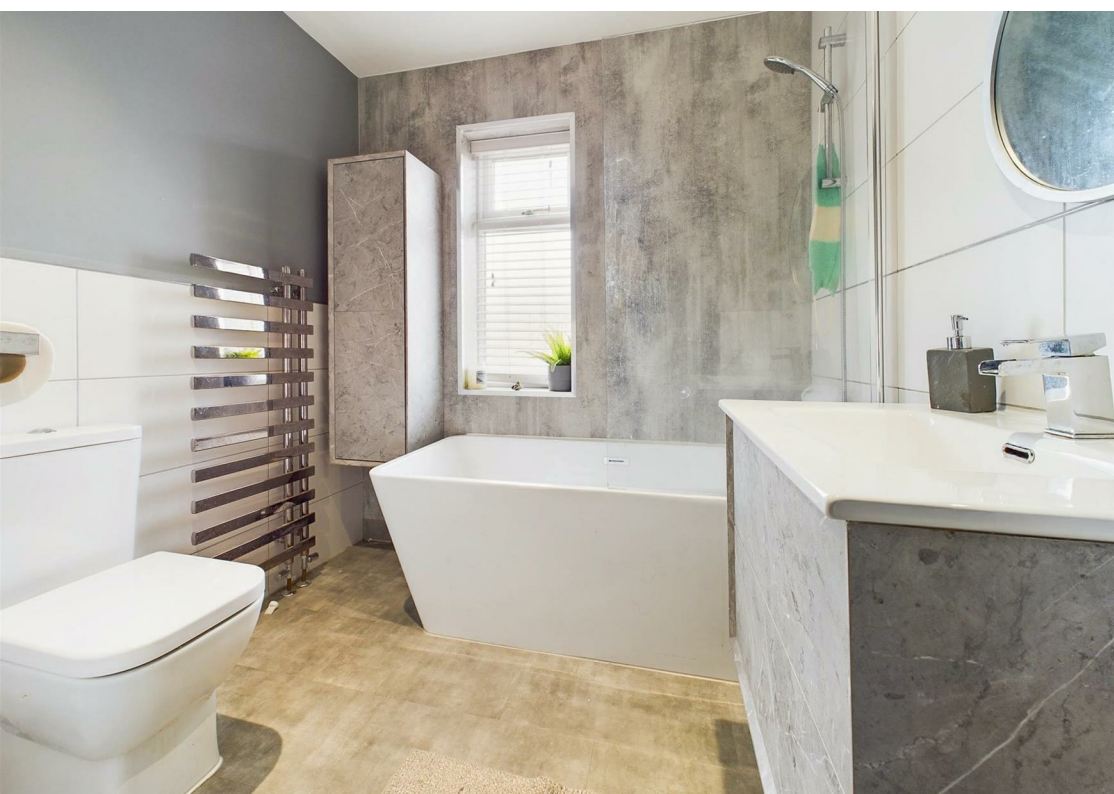
A good-sized lounge, illuminated by a feature bay window, provides a warm and inviting space whilst the heart of the home is the superb dining kitchen, boasting a modern design with an integrated double oven, gas hob, and extractor - ideal for both casual meals and entertaining. Further enhancing this home's appeal is a versatile conservatory with French doors and radiator heating, perfect for year-round use. Adjacent to the kitchen, the separate utility room provides practical space for a freestanding washing machine and tumble dryer, along with an adjoining cloakroom/WC. Internal access is also available to the garage/store which has both power and lighting as well as a garage door accessed from the driveway.

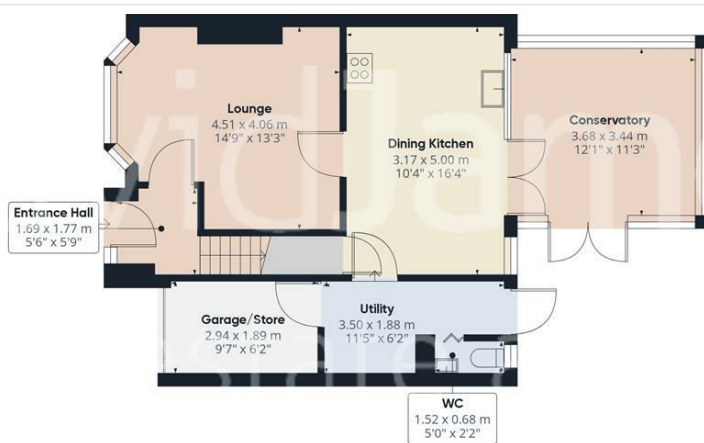
Upstairs, the property features four bedrooms, each offering a comfortable retreat. The family bathroom, updated in 2023, showcases a stylish white suite with a contemporary chrome-finish towel radiator.

Outside, the generous lawned rear garden is a true highlight, featuring a decked patio area that is perfect for outdoor relaxation with plenty of space available for garden furniture. For additional convenience, a block-paved driveway to the front provides off-street parking.



- Extended semi-detached family home
- Popular Bakersfield location
- Close to a variety of schools, shopping facilities and city-bound bus services
- Good-sized lounge with feature bay window
- Versatile conservatory with French doors and radiator heating
- Superb dining kitchen with separate utility room
- Four bedrooms
- Stylish modern bathroom with white suite (updated in 2023)
- Generous lawned rear garden with feature decked patio area
- Off-street parking to the front





Floor 0



Floor 1

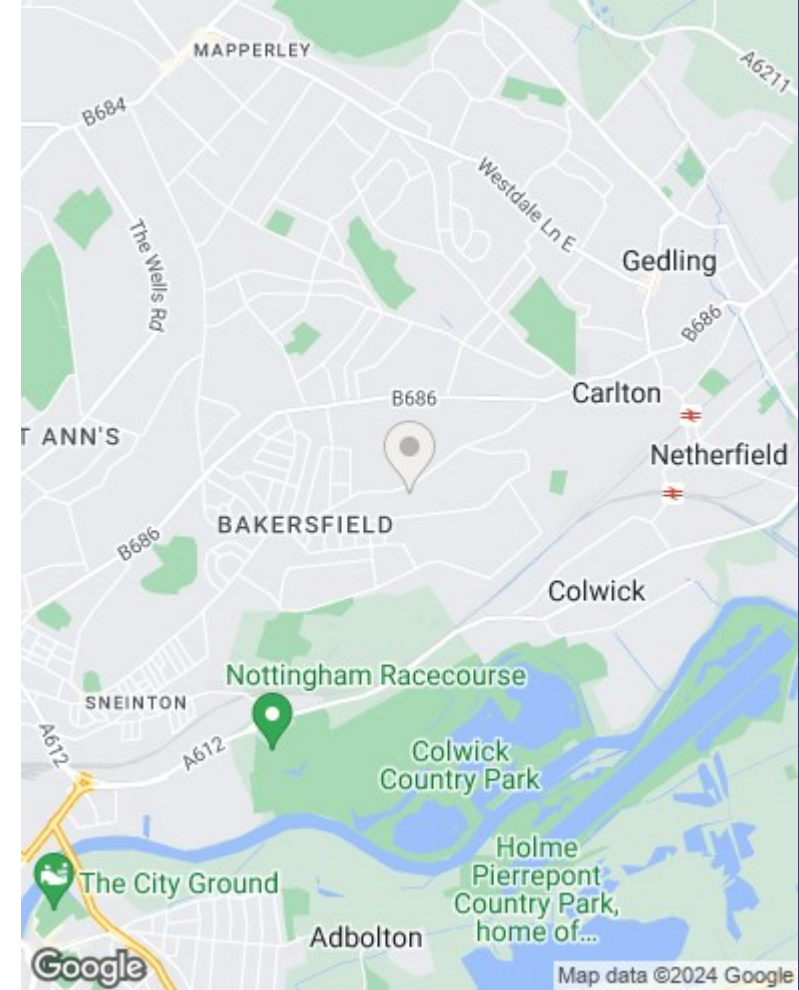


Approximate total area*
109.15 m²
1174.87 ft²

Excluding balconies and terraces

While every attempt has been made to ensure accuracy, all measurements are approximate, not to scale. This floor plan is for illustrative purposes only.

GIRAFFE360



These particulars are produced in good faith, are set out as a general guide only and do not constitute any part of a contract. No person in the employment of David James Estate Agents Ltd has any authority to make any representation whatsoever in relation to the property. All services, together with electrical fittings or fitted appliances have NOT been tested. All the measurements given in the details are approximate. Floor plans are for illustrative purposes only and are not drawn to scale. The position and size of doors, windows, appliances and other features are approximate only. The photographs of this property have been taken with a 10mm wide-angle lens. No responsibility can be accepted for any loss or expense incurred in viewing. If you have a property to sell you may wish to take advantage of our free valuation service. David James Estate Agents have established professional relationships with third-party suppliers for the provision of services to Clients. As remuneration for this professional relationship, the agent receives referral commission from the third-party company. David James Estate Agents receives the following commission from each third party supplier on a per referral basis: W A Barnes Ltd: £60 including VAT. All Moves UK Ltd: 18% including VAT of the invoice total (£107 including VAT average). MoveWithUs Limited: £188 including VAT (average).

Council Tax Band: B
Nottingham City Council
Freehold

DavidJames
the estate agent

David James Estate Agents
317 Carlton Hill, Nottingham, NG4 1GL
t: 0115 987 8957 e: carlton@david-james.com

