



3



1



2



D

DavidJames
the estate agent

Swains Avenue, Bakersfield, Nottingham, NG3 7AS

Guide Price £190,000

About This Property

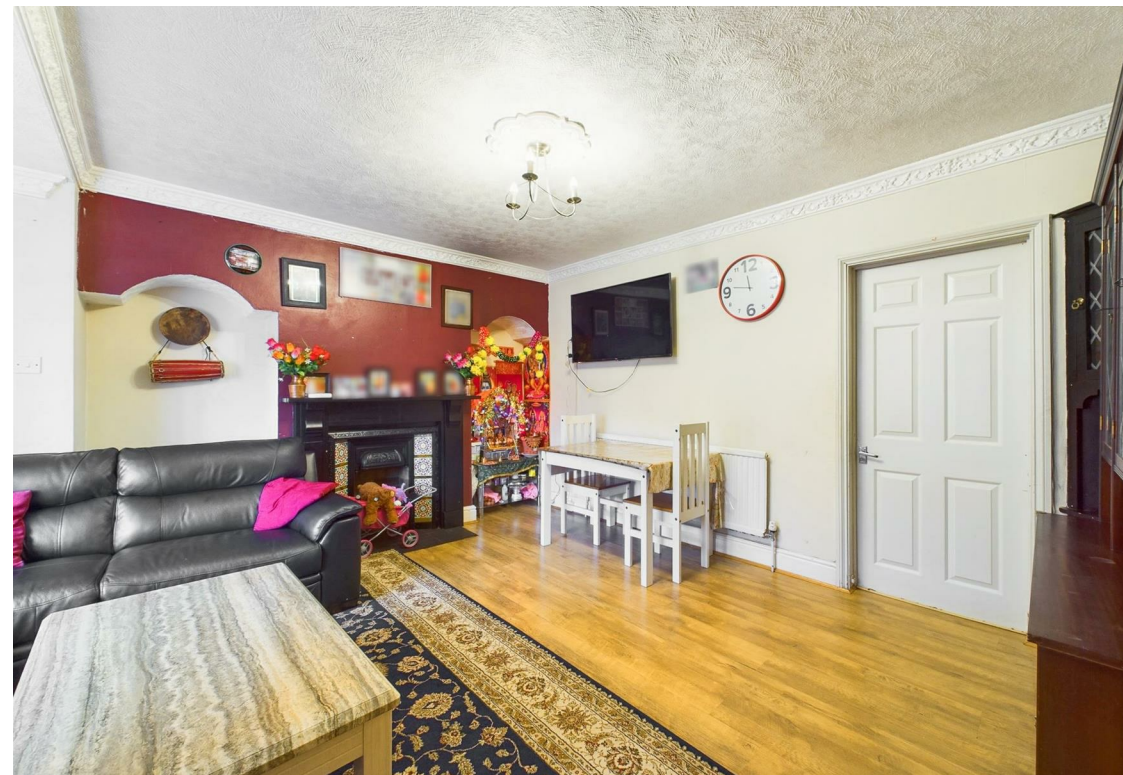
GUIDE PRICE £190,000-£200,000 This mid-terrace house, situated in a popular area of Bakersfield and conveniently close to the amenities of Carlton Hill, offers functional living space and a convenient location within commuting distance of the City Centre!

The residence opens into an entrance hall leading to an extended lounge/dining room, complete with a feature fireplace for a touch of character. The kitchen provides ample space for freestanding appliances to cater to your culinary needs. On the ground floor, there is a bathroom equipped with a three-piece suite and a corner bath, serving as a functional space for daily routines. The house also features a lean-to, which doubles as a sitting area and a utility space, efficiently utilizing the available area.

The bedrooms are all double in size and are spread across two floors, with two bedrooms on the first floor and an additional bedroom on the second floor. Another three-piece suite bathroom is conveniently situated on the first floor.

The property's exterior includes an enclosed rear garden, complete with a useful shed and a patio seating area for outdoor relaxation and entertaining. Additionally, the front driveway provides off-street parking, adding to the practicality of this home.

- Mid-terrace house set over three-storeys perfect for investors and first time buyers
- Popular Bakersfield location close to Carlton Hill's amenities
- A short commute from Nottingham City Centre
- Extended lounge/dining room with feature fireplace
- Kitchen with space for freestanding appliances
- Lean-to providing sitting area and utility space
- Two bathrooms (one ground floor, one first floor)
- Three double bedrooms
- Enclosed rear garden with patio seating area
- Driveway to the front providing off-street parking







Floor 0



Floor 1



Floor 2



Approximate total area⁸

89.34 m²
961.61 ft²

Reduced headroom

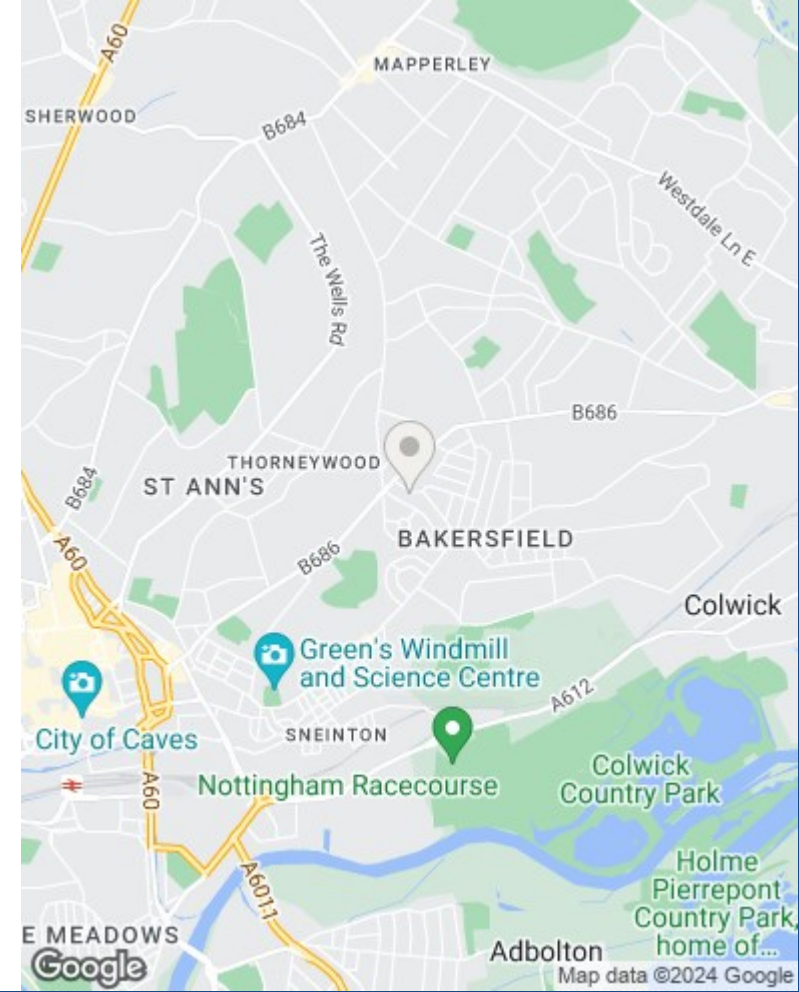
2.42 m²
26.1 ft²

Excluding balconies and terraces

Reduced headroom
(below 1.5m/4.92ft)

While every attempt has been made to ensure accuracy, all measurements are approximate, not to scale. This floor plan is for illustrative purposes only.

GIRAFFE360



These particulars are produced in good faith, are set out as a general guide only and do not constitute any part of a contract. No person in the employment of David James Estate Agents Ltd has any authority to make any representation whatsoever in relation to the property. All services, together with electrical fittings or fitted appliances have NOT been tested. All the measurements given in the details are approximate. Floor plans are for illustrative purposes only and are not drawn to scale. The position and size of doors, windows, appliances and other features are approximate only. The photographs of this property have been taken with a 10mm wide-angle lens. No responsibility can be accepted for any loss or expense incurred in viewing. If you have a property to sell you may wish to take advantage of our free valuation service. David James Estate Agents have established professional relationships with third-party suppliers for the provision of services to Clients. As remuneration for this professional relationship, the agent receives referral commission from the third-party company. David James Estate Agents receives the following commission from each third party supplier on a per referral basis: W A Barnes Ltd: £60 including VAT. All Moves UK Ltd: 18% including VAT of the invoice total (£107 including VAT average). MoveWithUs Limited: £188 including VAT (average).

Council Tax Band: A
Nottingham City Council
Freehold

DavidJames
the estate agent

David James Estate Agents
317 Carlton Hill, Nottingham, NG4 1GL
t: 0115 987 8957 e: carlton@david-james.com

