



Grensell Close | | Eversley | RG27 0QQ

£495,000

Waterford's W
Residential Sales & Lettings

Grensell Close | Eversley | RG27 0QQ £495,000

Welcome to Grensell Close, Eversley - a charming property that could be your next dream home! This delightful house, built in 1997, boasts a perfect blend of modern comfort and classic elegance.

As you step inside, you'll be greeted by not one, not two, but three inviting reception rooms, offering ample space for entertaining guests or simply relaxing with your loved ones. The layout is versatile, allowing you to create different living areas to suit your lifestyle.

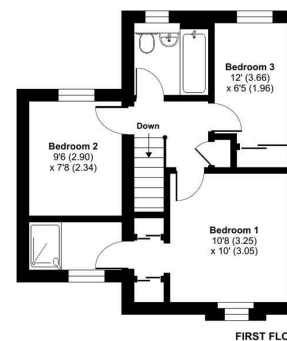
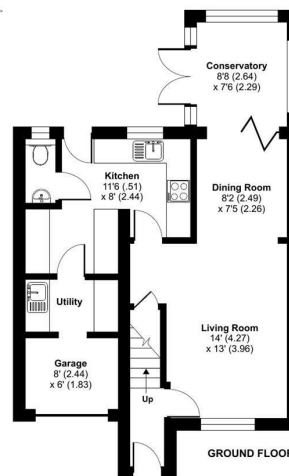
With three bedrooms and two well-appointed bathrooms ensure convenience and

- Three Bedrooms
- Two Reception Rooms
- Conservatory
- Semi-Detached
- En-Suite and Family Bathroom
- Cul-de-Sac Location

Location

Description

Outside



Grensell Close, Eversley, Hook, RG27

Approximate Area = 1003 sq ft / 93.2 sq m
For identification only - Not to scale

Energy Efficiency Rating		Current	Potential
<i>Very energy efficient - lower running costs</i>			
(92 plus) A			86
(81-91) B			
(69-80) C			
(55-68) D		66	
(39-54) E			
(21-38) F			
(1-20) G			
<i>Not energy efficient - higher running costs</i>			
England & Wales		EU Directive 2002/91/EC	



Floor plan produced in accordance with RICS Property Measurement Standards incorporating International Property Measurement Standards (IPMS Residential). © nitchecom 2024. Produced for Waterfords. REF: 1122609



35 Plough Road
Yateley
Hampshire
GU46 7UW
01252 870222

yateley@waterfords.co.uk
<https://www.waterfords.cc>