



Furzedown

Green Lane | Frogmore | Camberley | GU17 0NU

Asking Price £585,000

Waterford's W
Residential Sales & Lettings

Furzedown

Green Lane | Frogmore
Camberley | GU17 0NU
Asking Price £585,000

A rarely available three bedroom semi-detached house on a generous plot with own detached garage and driveway in a sought after position close to the village green in Frogmore



- Character semi detached house
- Secluded plot
- Cloak/shower room and bathroom
- Detached garage and driveway
- Non estate position close to village green
- Three bedrooms
- Landscaped gardens with Loggia

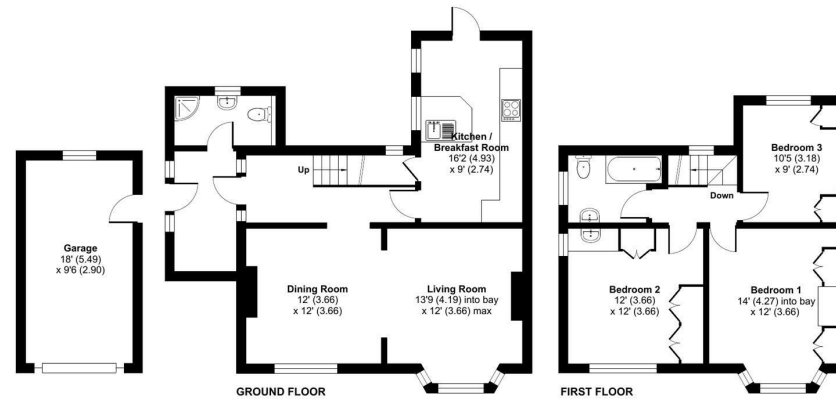
Location

Outside

Description

Furzedown Green Lane, Frogmore, Camberley, GU17

Approximate Area = 1172 sq ft / 108.8 sq m
Garage = 171 sq ft / 15.8 sq m
Total = 1343 sq ft / 124.6 sq m
For identification only - Not to scale



Energy Efficiency Rating		Current	Potential
<i>Very energy efficient - lower running costs</i>			
(92 plus) A			
(81-91) B			
(69-80) C		72	83
(55-68) D			
(39-54) E			
(21-38) F			
(1-20) G			
<i>Not energy efficient - higher running costs</i>			
England & Wales		EU Directive 2002/91/EC	



Floor plan produced in accordance with RICS Property Measurement Standards incorporating International Property Measurement Standards (IPMS Residential). © nitchcom 2023. Produced for Waterfords. REF: 1026696



35 Plough Road
Yateley
Hampshire
GU46 7UW
01252 870222

yateley@waterfords.co.uk
<https://www.waterfords.cc>