



Kelsey Grove | Yateley | Hampshire | GU46 6AR

Asking Price £700,000

*Waterford's* W  
Residential Sales & Lettings



Kelsey Grove | Yateley  
Hampshire | GU46 6AR  
Asking Price £700,000



A four bedroom, detached house with en-suite, large family bathroom, three reception rooms, a conservatory, utility room and double garage with remote control.

- Sought after location
- Three reception rooms
- Council tax band F
- Four generous bedrooms and two bathrooms
- Conservatory
- Double garage and lovely gardens

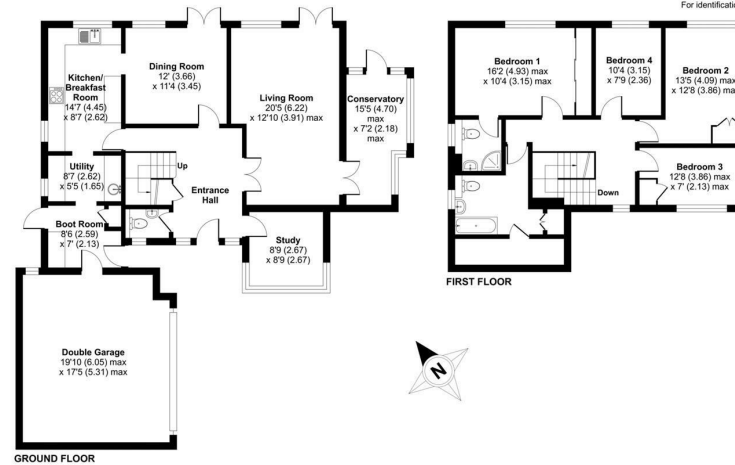
Location

Outside

Description

Kelsey Grove, Yateley, Hampshire, GU46

Approximate Area = 1854 sq ft / 172.2 sq m  
Garage = 339 sq ft / 31.4 sq m  
Total = 2193 sq ft / 203.6 sq m  
For identification only - Not to scale



Energy Efficiency Rating		Current	Potential
Very energy efficient - lower running costs			
(92 plus) <b>A</b>			<b>93</b>
(81-91) <b>B</b>			
(69-80) <b>C</b>		<b>71</b>	
(55-68) <b>D</b>			
(39-54) <b>E</b>			
(21-38) <b>F</b>			
(1-20) <b>G</b>			
Not energy efficient - higher running costs			
<b>England &amp; Wales</b>		EU Directive 2002/91/EC	



Floor plan produced in accordance with RICS Property Measurement Standards incorporating International Property Measurement Standards (IPMS Residential). © rickrecom 2023. Produced for Waterfords. REF: 1020644



35 Plough Road  
Yateley  
Hampshire  
GU46 7UW  
01252 780222

yateley@waterfords.co.uk  
<https://www.waterfords.cc>