



Church View | Yateley | Hampshire | GU46 7TW

Offers In Excess Of £340,000

Waterford's W
Residential Sales & Lettings

Church View | Yateley
Hampshire | GU46 7TW
Offers In Excess Of £340,000

Waterfords are delighted to present to the market this excellently presented 2 bedroom house benefitting from a conservatory/dining room extension and two parking spaces.

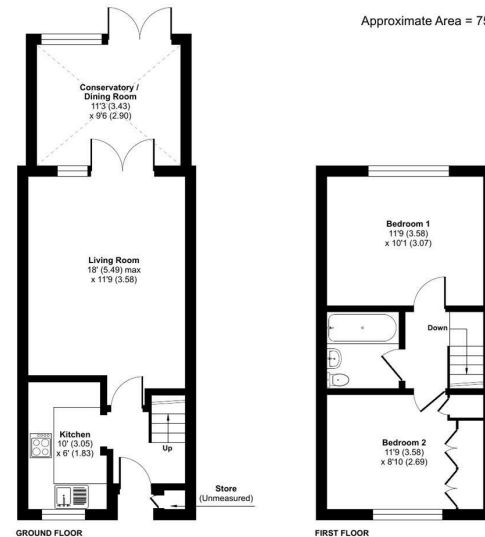


- 2 Double Bedrooms
- 2 allocated parking spaces closeby
- Refitted kitchen and bathroom
- Conservatory/Dining Room extension
- Front and rear garden
- Sought after location

Location

Description

Outside



Church View, GU46

Approximate Area = 750 sq ft / 69.7 sq m (excludes store)
For identification only - Not to scale

Energy Efficiency Rating		Current	Potential
Very energy efficient - lower running costs			
(92 plus) A			90
(81-91) B			
(69-80) C			
(55-68) D		58	
(39-54) E			
(21-38) F			
(1-20) G			
Not energy efficient - higher running costs			
England & Wales		EU Directive 2002/91/EC	

Floor plan produced in accordance with RICS Property Measurement Standards incorporating International Property Measurement Standards (IPMS Residential). © rickhcom 2024. Produced for Waterfords. REF: 1006433



35 Plough Road
Yateley
Hampshire
GU46 7UW
01252 870222

yateley@waterfords.co.uk
<https://www.waterfords.cc>