



Brook House

Cricket Hill Lane | Yateley | Hampshire | GU46 6AX

Asking Price £775,000

Waterford's W
Residential Sales & Lettings

Brook House

Cricket Hill Lane | Yateley
Hampshire | GU46 6AX
Asking Price £775,000

An architect designed four bedroom, three bathroom, three reception room house, just under a third of an acre plot in need of updating in sought after Cricket Hill Lane.



- Four bedrooms, three bathrooms
- Architect Designed
- Scenic Garden with spring fed pond
- Council Tax Band G
- Three reception rooms
- Double Garage
- Approximately just under a third acre plot

Location

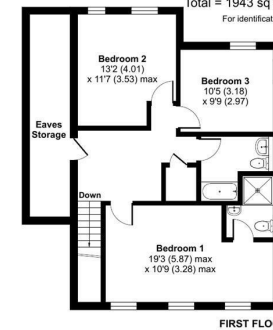
Outside

Description



Cricket Hill Lane, Yateley, GU46

Approximate Area = 1650 sq ft / 153.2 sq m (excludes eaves storage)
Garage = 293 sq ft / 27.2 sq m
Total = 1943 sq ft / 180.5 sq m
For identification only - Not to scale



Floor plan produced in accordance with RICS Property Measurement Standards incorporating International Property Measurement Standards (IPMS Residential). © rickshom 2024. Produced for Waterfords. REF: 1061750



Energy Efficiency Rating		Current	Potential
Very energy efficient - lower running costs			
(92 plus) A			83
(81-91) B			
(69-80) C			
(55-68) D		67	
(39-54) E			
(21-38) F			
(1-20) G			
Not energy efficient - higher running costs			
England & Wales		EU Directive 2002/91/EC	

35 Plough Road
Yateley
Hampshire
GU46 7UW
01252 870222

yateley@waterfords.co.uk
<https://www.waterfords.cc>