



Lawford Crescent | Yateley | | GU46 6JX

Guide Price £565,000

*Waterford's* W  
Residential Sales & Lettings



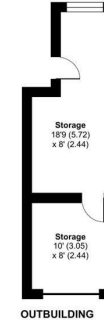
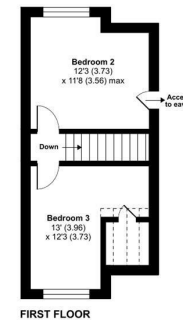
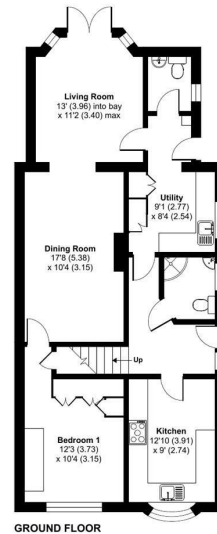
Lawford Crescent | Yateley  
 | GU46 6JX  
 Guide Price £565,000

A highly sought after semi detached dormer bungalow on a generous plot offering extensive, flexible accommodation located a short walk to Yateley town centre.



- Three Bedrooms
- Chalet Bungalow
- Landscaped Rear Garden
- Flexible Living Space
- Oversized Garage and Driveway
- No Onward Chain

Location  
 Outside  
 Description



GROUND FLOOR

FIRST FLOOR

OUTBUILDING



Floor plan produced in accordance with RICS Property Measurement Standards incorporating International Property Measurement Standards (IPMS Residential). © nitchcom 2024. Produced for Waterfords. REF: 110022



Lawford Crescent, Yateley, GU46

Approximate Area = 1192 sq ft / 110.7 sq m  
 Limited Use Area(s) = 204 sq ft / 2.8 sq m  
 Outbuilding = 204 sq ft / 19 sq m  
 Total = 1426 sq ft / 132.5 sq m

For identification only - Not to scale

Denotes restricted head height

Energy Efficiency Rating		Current	Potential
Very energy efficient - lower running costs			
(92 plus) A			86
(81-91) B		71	
(69-80) C			
(55-68) D			
(39-54) E			
(21-38) F			
(1-20) G			
Not energy efficient - higher running costs			
England & Wales		EU Directive 2002/91/EC	

35 Plough Road  
 Yateley  
 Hampshire  
 GU46 7UW  
 01252 870222

yateley@waterfords.co.uk  
<https://www.waterfords.cc>