



2 Lydebrook Cottages

Eversley Road | Yateley | Hampshire | GU46 7TD

Guide Price £550,000

Waterford's W
Residential Sales & Lettings

2 Lydebrook

Eversley Road | Yateley
Hampshire | GU46 7TD
Guide Price £550,000

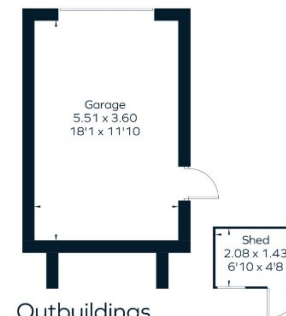
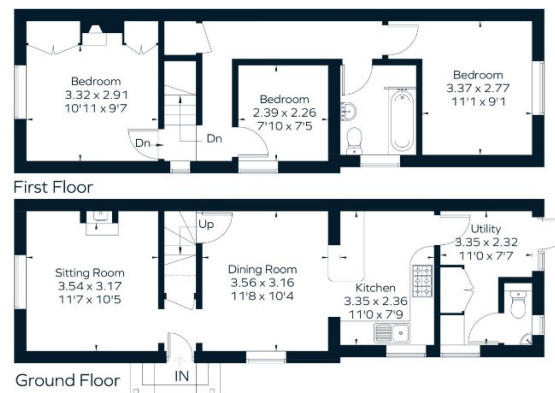
Viewings are highly advised at this wonderfully presented three-bedroom semi-detached Victorian home with 200-ft garden.



- Semi-detached
- Character Home
- Utility Room
- Detached garage/workshop
- Non-estate Location
- Three Bedrooms
- 200-ft Garden
- Council Tax Band: D

Approximate Area = 97.7 sq m / 944 sq ft
Garage = 19.8 sq m / 213 sq ft
Total = 107.5 sq m / 1157 sq ft
Including Limited Use Area (0.8 sq m / 9 sq ft)

= Reduced head height below 1.5m



Outbuildings
(Not Shown In Actual Location / Orientation)

Energy Efficiency Rating		Current	Potential
Very energy efficient - lower running costs			
(92 plus)	A		85
(81-91)	B		
(69-80)	C		
(55-68)	D	65	
(39-54)	E		
(21-38)	F		
(1-20)	G		
Not energy efficient - higher running costs			
England & Wales		EU Directive 2002/91/EC	



Location

Outside

Description

35 Plough Road
Yateley
Hampshire
GU46 7UW
01252 870222

yateley@waterfords.co.uk
<https://www.waterfords.cc>