



Kevins Drive | Yateley | Hampshire | GU46 7TL

Asking Price £675,000

Freehold

*Waterford's* W  
Residential Sales & Lettings

Ke vins Drive | Yateley  
 Hampshire | GU46 7TL  
 Asking Price £675,000



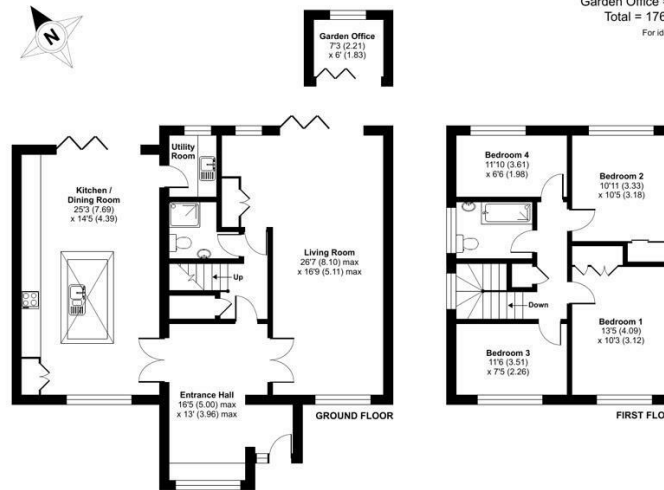
A wonderful four-bedroom detached family home with a luxury kitchen/dining room extension, two modern bathrooms, and a landscaped rear garden.

- Detached family home
- 4 bedrooms
- Luxury kitchen/dining room extension
- Modern refitted bathroom and shower room
- Landscaped garden
- Council tax band E

## Location

## Outside

## Description



### Ke vins Drive, Yateley, Hampshire, GU46

Approximate Area = 1725 sq ft / 160.2 sq m  
 Garden Office = 44 sq ft / 4.1 sq m  
 Total = 1769 sq ft / 164.3 sq m  
 For identification only - Not to scale

Energy Efficiency Rating		Current	Potential
Very energy efficient - lower running costs			
(92 plus) A			
(81-91) B			
(69-80) C		74	83
(55-68) D			
(39-54) E			
(21-38) F			
(1-20) G			
Not energy efficient - higher running costs			
England & Wales		EU Directive 2002/91/EC	



Floor plan produced in accordance with RICS Property Measurement Standards incorporating International Property Measurement Standards (IPMS Residential). © n2wcom 2024. Produced for Waterfords. REF: 1106552



35 Plough Road  
 Yateley  
 Hampshire  
 GU46 7UW  
 01252 870222

yateley@waterfords.co.uk  
<https://www.waterfords.cc>