



55 Spindle View, Calverton – NG14 6HF

Guide Price £325,000

DavidJames
the estate agent



55 Spindle View

Calverton, Nottingham

NO CHAIN! Extended 4 bed detached family home boasting wonderful views to the rear over open countryside! Lounge/dining room, modern breakfast kitchen, 4-piece bathroom and a southerly-facing garden!

Council Tax band: D

Tenure: Freehold

EPC Energy Efficiency Rating: D

EPC Environmental Impact Rating: D

- Extended and well-presented semi-detached family home in a quiet cul-de-sac location offering open countryside views to the rear
- Available with no upward chain
- Spacious open-plan lounge/dining room
- Conservatory providing additional living space
- Modern breakfast kitchen
- Four well-proportioned bedrooms
- Spacious, stylish four-piece family bathroom with free-standing bath and walk-in shower
- Integral garage providing secure parking or useful additional storage space
- Private rear garden with gated access onto open fields, enjoying far-reaching countryside views
- Driveway and off-street driveway parking available for two vehicles







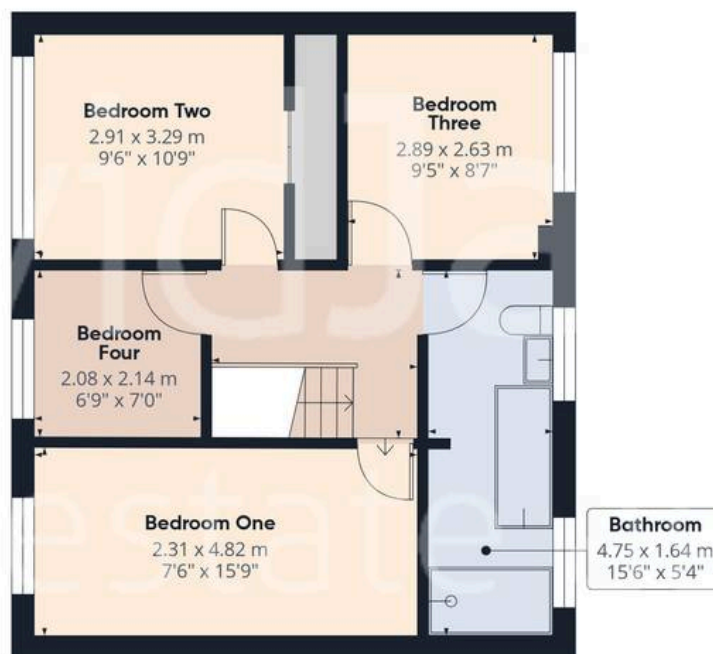


Floor 0

Approximate total area⁽¹⁾

109.9 m²

1182 ft²



Floor 1

(1) Excluding balconies and terraces

Calculations reference the RICS IPMS 3C standard. Measurements are approximate and not to scale. This floor plan is intended for illustration only.

GIRAFFE360





David James Estate Agents

David James Estate Agents, 45B Plains Road – NG3 5JU

0115 962 4213 • mapperley@david-james.com • www.david-james.com

These particulars are produced in good faith and are set out as a general guide only. Measurements are approximate and floor plans are for illustrative purposes only. Services have not been tested. We have established professional relationships with third-party suppliers for the provision of services to Clients, details of which can be found on the property listing page on our website.