



25 Leslie Grove, Calverton – NG14 6GL

Guide Price **£280,000**

DavidJames
the estate agent



25 Leslie Grove

Calverton, Nottingham

GUIDE PRICE £280,000–£290,000 Detached 2-bed bungalow offered with no chain on a generous corner plot in a cul-de-sac – ideal for those seeking single-level living in the ever popular Calverton!

Council Tax band: C

Tenure: Freehold

EPC Energy Efficiency Rating: D

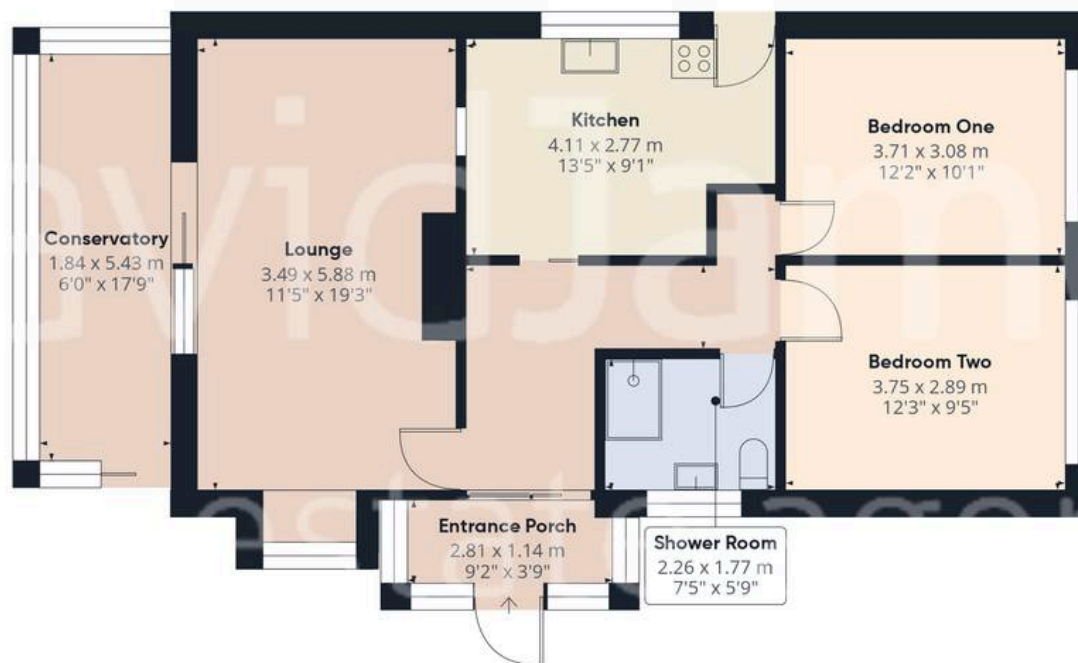
EPC Environmental Impact Rating:

- Spacious detached bungalow in a quiet cul-de-sac
- Offered to the market with no upward chain
- Perfect for those seeking comfortable single-level living
- Light-filled lounge with a feature gas fire and conservatory access
- Fitted kitchen with integrated cooking appliances
- Two double bedrooms (both with fitted wardrobes)
- Shower room with a three-piece suite and an electric shower
- Boarded loft space with a pull-down ladder and lighting for added storage flexibility
- Wraparound low-maintenance garden with patio, pergola, greenhouse and mature planted borders
- Detached garage and off-street parking









Floor 0 Building 1

Approximate total area⁽¹⁾

91.9 m²

990 ft²



Floor 0 Building 2

(1) Excluding balconies and terraces

Calculations reference the RICS IPMS 3C standard. Measurements are approximate and not to scale. This floor plan is intended for illustration only.

GIRAFFE360



David James Estate Agents

98-100 Front Street, Arnold - NG5 7EJ

0115 955 5550 • arnold@david-james.com • www.david-james.com

These particulars are produced in good faith and are set out as a general guide only. Measurements are approximate and floor plans are for illustrative purposes only. Services have not been tested. We have established professional relationships with third-party suppliers for the provision of services to Clients, details of which can be found on the property listing page on our website.