



16 Shoreswood Close, Nottingham – NG5 5PY

Guide Price £180,000

DavidJames
the estate agent



16 Shoreswood Close

Nottingham, Nottingham

3-bed semi-detached property in a cul-de-sac – offered with no chain and perfect for first-time buyers or investors! Bright living spaces, refitted bathroom and a low-maintenance garden plus a garage!

Council Tax band: A

Tenure: Freehold

EPC Energy Efficiency Rating: D

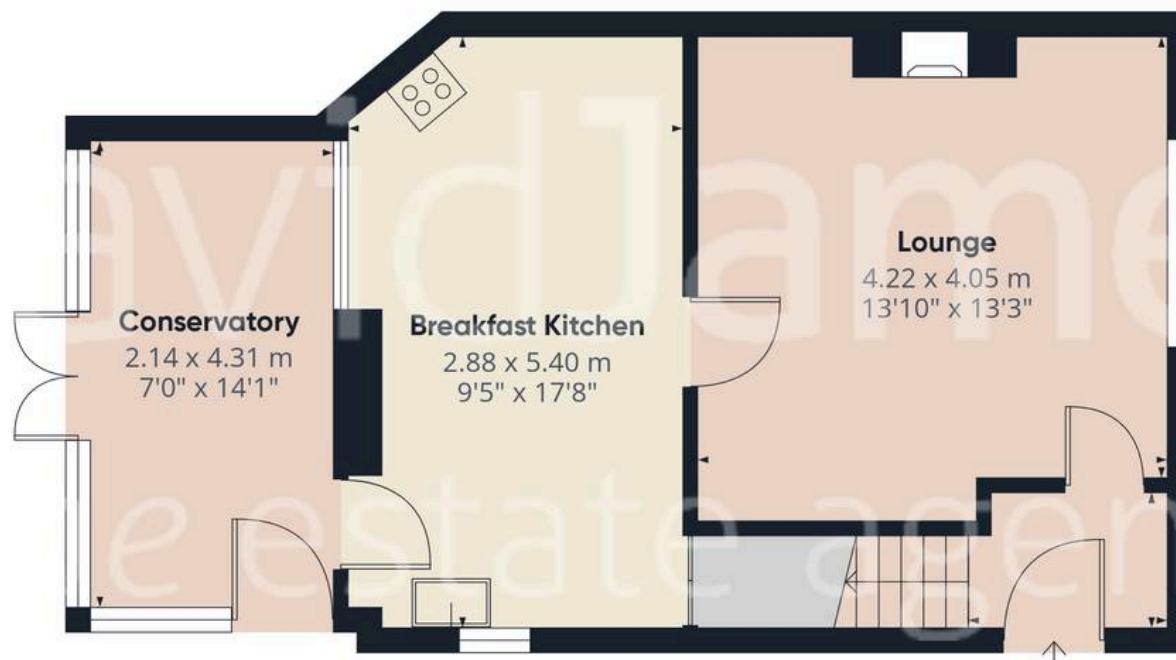
EPC Environmental Impact Rating: D

- Semi-detached family home
- Offered to the market with no upward chain
- Cul-de-sac location close to local amenities, a variety of schools and frequent bus services
- Garage to the rear within a block
- Bright and spacious lounge with a feature gas fire
- Generous dining kitchen with integrated cooking appliances
- Versatile conservatory with French door garden access
- Three bedrooms (including two double bedrooms)
- Superb modern bathroom with a three-piece suite with an electric shower
- Enclosed and low-maintenance rear garden with a feature pond









Floor 0 Building 1

Approximate total area⁽¹⁾

82.1 m²
883 ft²



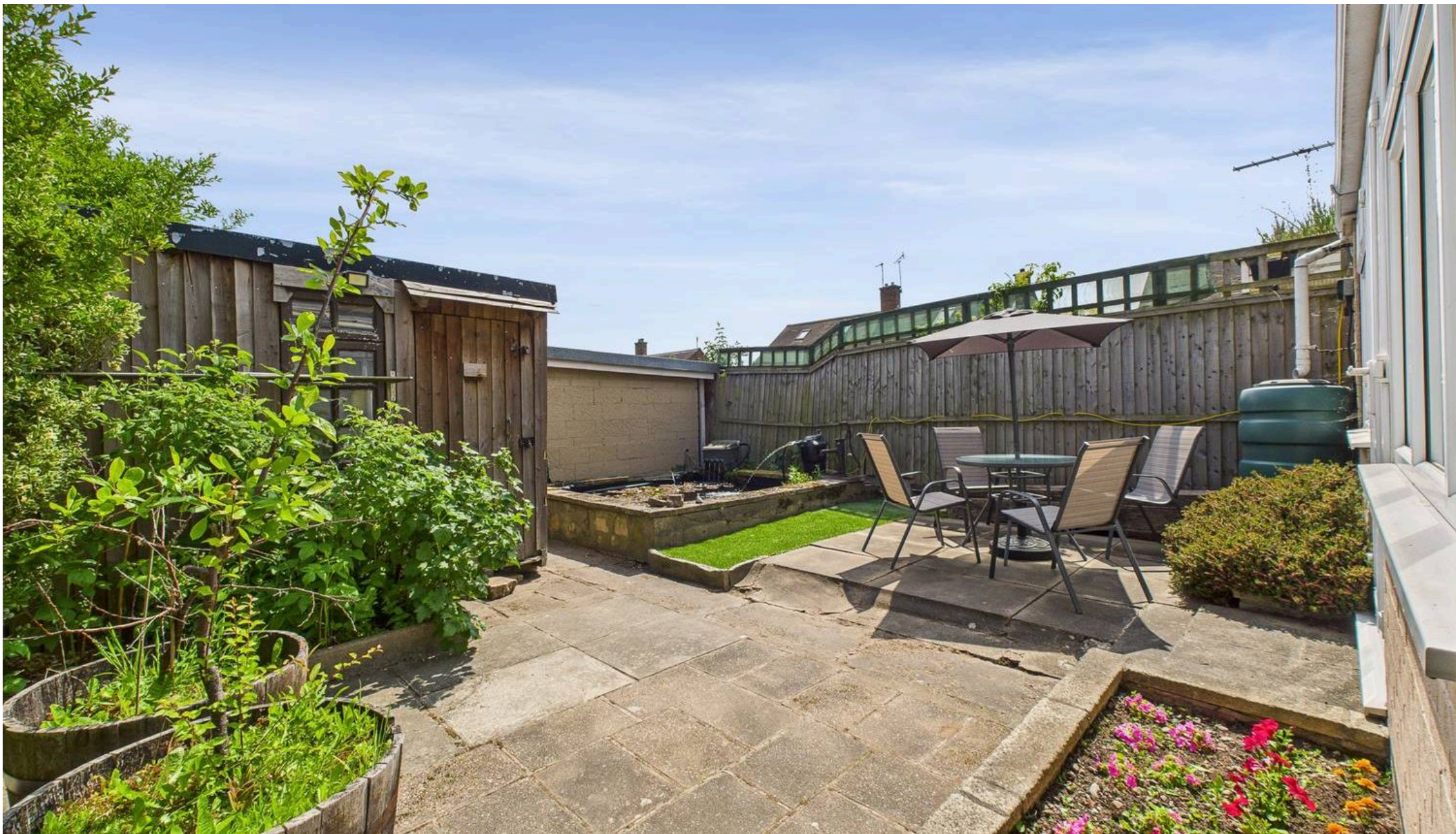
Floor 1 Building 1

(1) Excluding balconies and terraces

While every attempt has been made to ensure accuracy, all measurements are approximate, not to scale. This floor plan is for illustrative purposes only.

Calculations are based on RICS IPMS 3C standard.

GIRAFFE360



David James Estate Agents

98-100 Front Street, Arnold - NG5 7EJ

0115 955 5550 • arnold@david-james.com • www.david-james.com

These particulars are produced in good faith and are set out as a general guide only. Measurements are approximate and floor plans are for illustrative purposes only. Services have not been tested. We have established professional relationships with third-party suppliers for the provision of services to Clients, details of which can be found on the property listing page on our website.