



26 Westland Avenue, Hucknall - NG15 6FW
£180,000



26 Westland Avenue

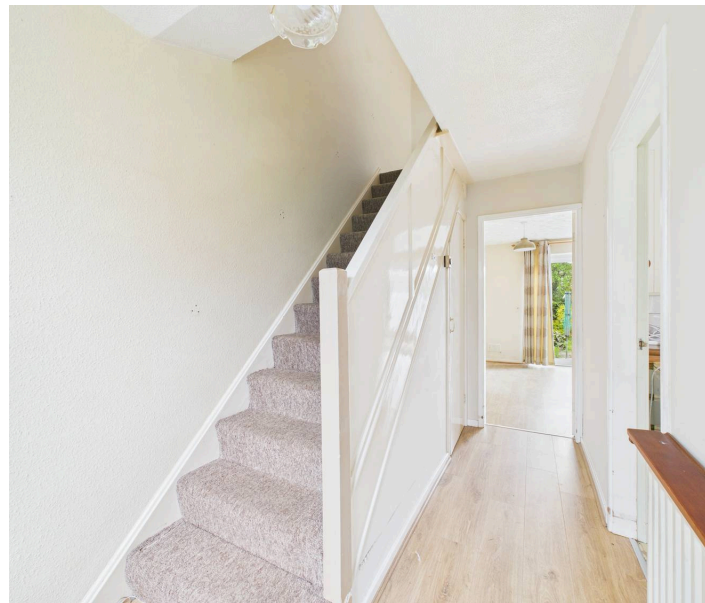
Hucknall, Nottingham

Semi-detached family home with great potential for modernisation, offered with no chain! Ideal for those seeking a project and offering a lounge, kitchen, 3 beds and a multi-car driveway with garage.

Council Tax band: B

Tenure: Freehold

- Semi-detached house
- Offered to the market with no upward chain
- Huge potential to modernise and personalise
- Within easy reach of Hucknall's amenities, schools and public transport links
- Bright and spacious lounge with a large sliding patio door
- Breakfast kitchen with space for freestanding appliances
- Three first floor bedrooms
- First floor shower room with a three-piece suite
- Good-sized established garden with an initial patio area
- Multi-vehicle driveway provides parking and garage access







Floor 0



Floor 1

Approximate total area⁽¹⁾

71.89 m²

773.84 ft²

Reduced headroom

0.98 m²

10.57 ft²

(1) Excluding balconies and terraces

Reduced headroom

..... Below 1.5 m/5 ft

While every attempt has been made to ensure accuracy, all measurements are approximate, not to scale. This floor plan is for illustrative purposes only.

Calculations are based on RICS IPMS 3C standard.

GIRAFFE360



David James Estate Agents

98-100 Front Street, Arnold - NG5 7EJ

0115 955 5550 • arnold@david-james.com • www.david-james.com

These particulars are produced in good faith and are set out as a general guide only. Measurements are approximate and floor plans are for illustrative purposes only. Services have not been tested. We have established professional relationships with third-party suppliers for the provision of services to Clients, details of which can be found on the property listing page on our website.