



28 Flintham Drive, Nottingham – NG5 3DS

Guide Price £220,000

DavidJames
the estate agent



28 Flintham Drive

Nottingham, Nottingham

Spacious 3-bed semi-detached home with modern features. Lounge with fireplace, integrated kitchen, 3 bedrooms, modern bathroom, parking, and garden. Ideal for families with no upward chain.

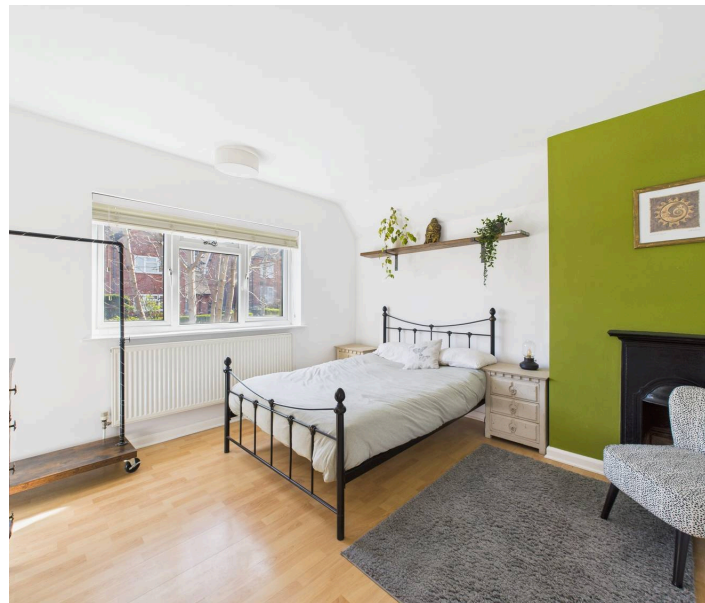
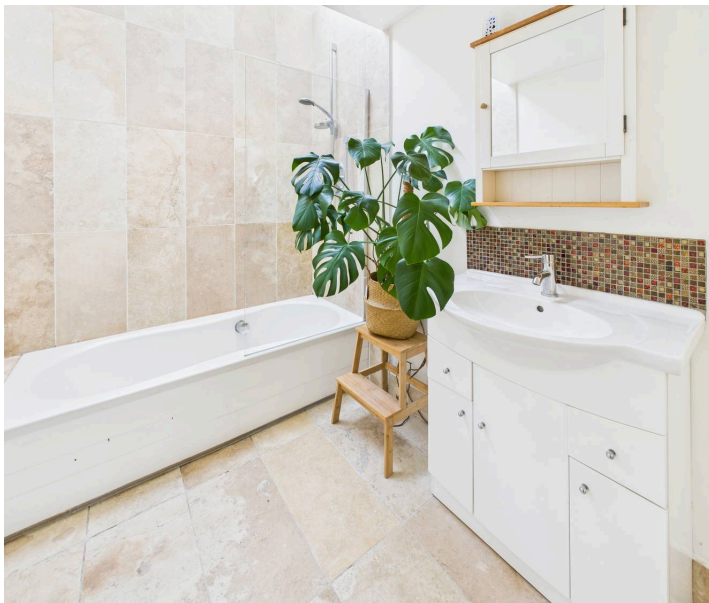
Council Tax band: A

Tenure: Freehold

EPC Energy Efficiency Rating: D

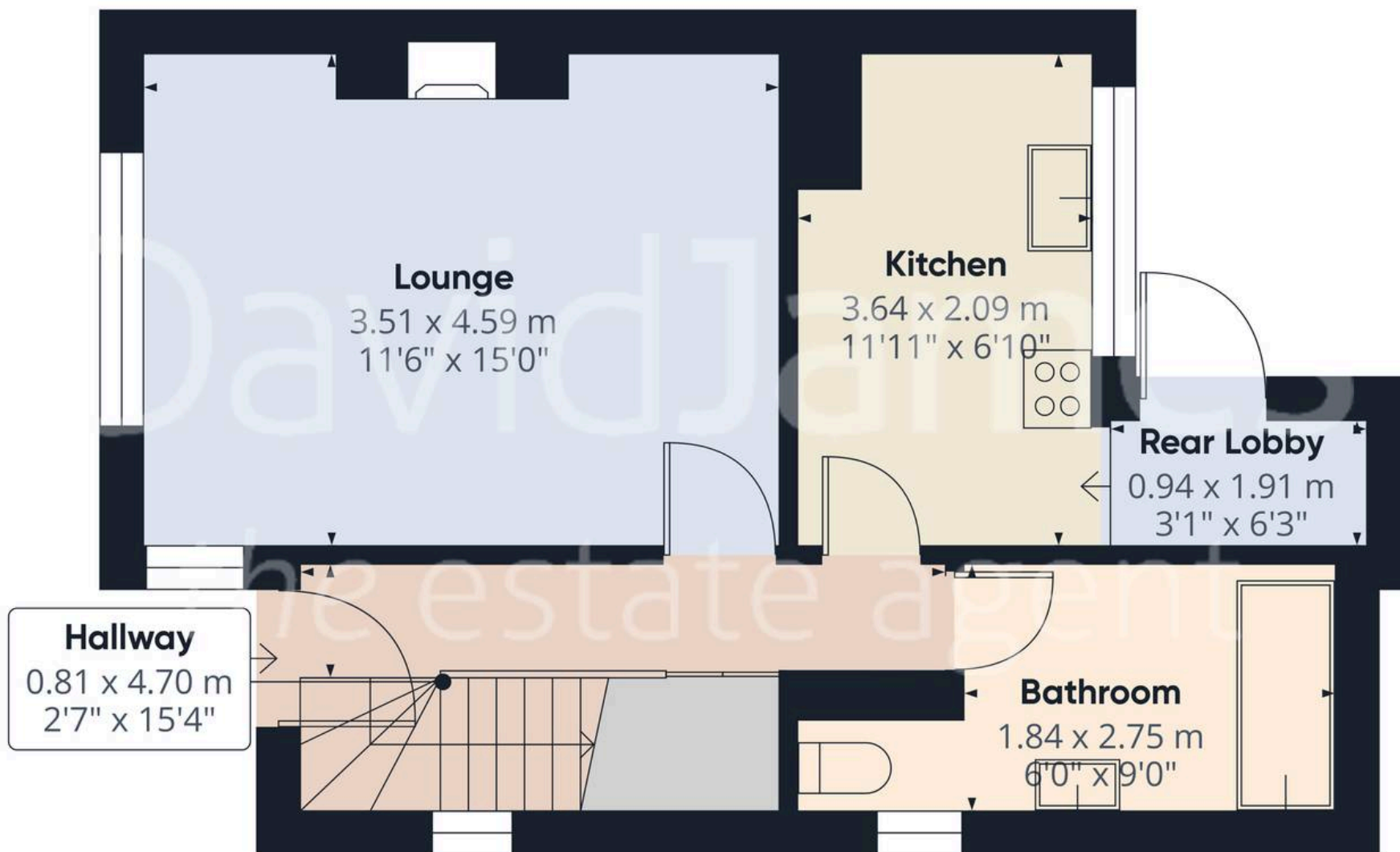
EPC Environmental Impact Rating: D

- A very well presented semi detached house
- Three good sized bedrooms
- Lounge with fireplace and burner
- Kitchen with integrated appliances
- Modern bathroom/WC with white suite, vanity unit and shower
- Entrance hall and rear lobby
- Combination gas central heating
- UPVC double glazing
- Off street parking and lawned rear garden with decking
- No Upward Chain









Approximate total area⁽¹⁾

38.71 m²

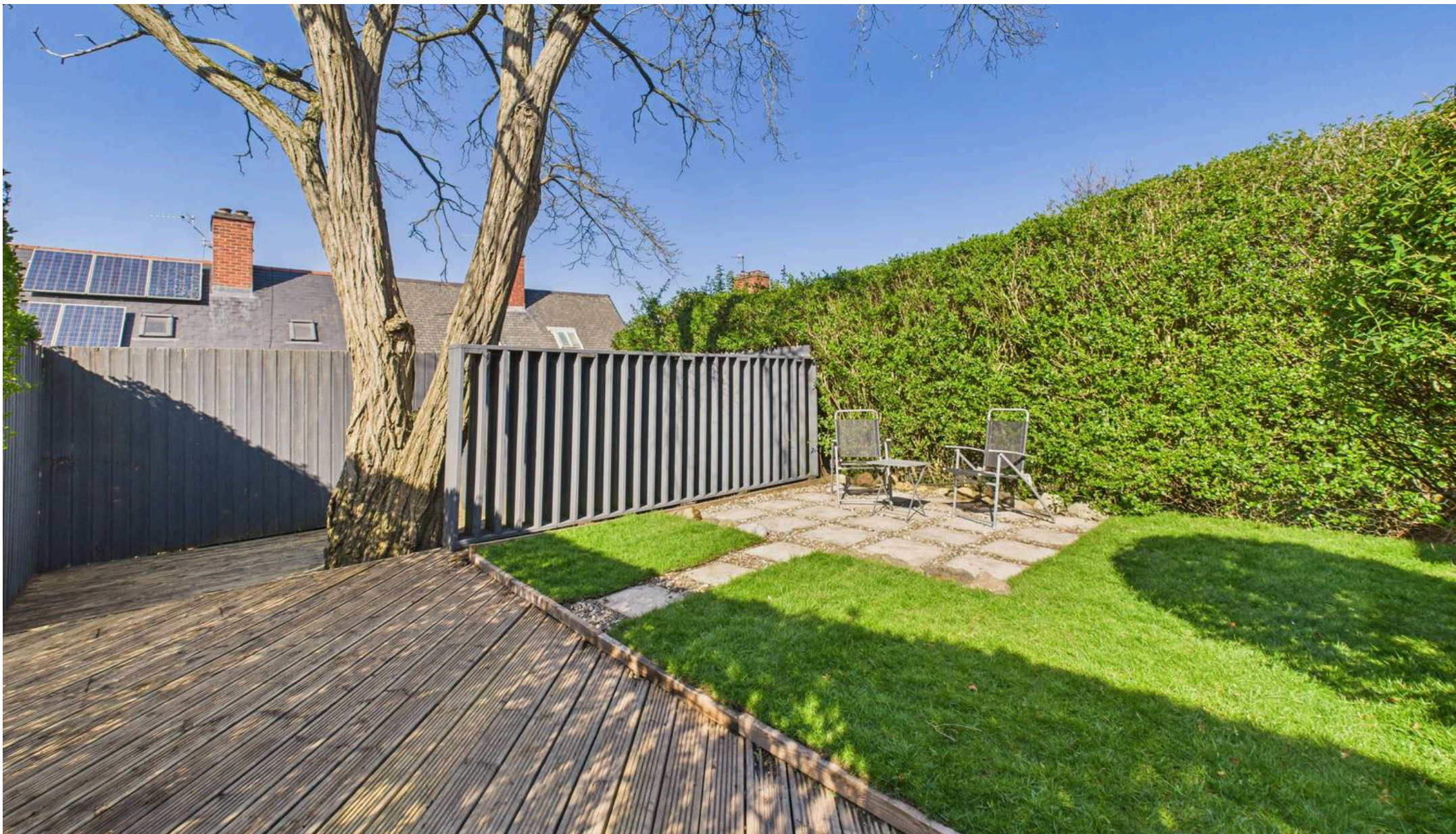
416.67 ft²

(1) Excluding balconies and terraces

While every attempt has been made to ensure accuracy, all measurements are approximate, not to scale. This floor plan is for illustrative purposes only.

Calculations are based on RICS IPMS 3C standard.

GIRAFFE360



David James Estate Agents

David James Estate Agents, 45B Plains Road – NG3 5JU

0115 962 4213 • mapperley@david-james.com • www.david-james.com

These particulars are produced in good faith and are set out as a general guide only. Measurements are approximate and floor plans are for illustrative purposes only. Services have not been tested. We have established professional relationships with third-party suppliers for the provision of services to Clients, details of which can be found on the property listing page on our website.