



DavidJames
the estate agent

The Close, Sherwood, Nottingham, NG5 3DB

Guide Price £230,000

About This Property

GUIDE PRICE £230,000 - £240,000. This charming semi-detached house is discreetly positioned on a peaceful cul-de-sac in Sherwood. Boasting three well-appointed bedrooms, this home welcomes you with a generous entrance hall featuring a practical understairs storage cupboard. The inviting lounge is adorned with a warm fireplace housing a gas fire and a glazed door that opens to a secluded rear garden, providing a perfect backdrop for relaxation or entertaining. The dining room has a distinctive front-facing window and the kitchen has panelled units, tiled flooring, and a substantial range cooker. The spa bath and shower with mixer taps, set against a white suite, provide a luxurious touch to the first-floor bathroom. Modern comforts are assured with efficient gas central heating and UPVC double glazing. External features include a driveway for convenient off-road parking and an inviting rear garden with a blend of gravelled and paved patio areas, pathways, and flourishing borders, creating an outdoor haven.



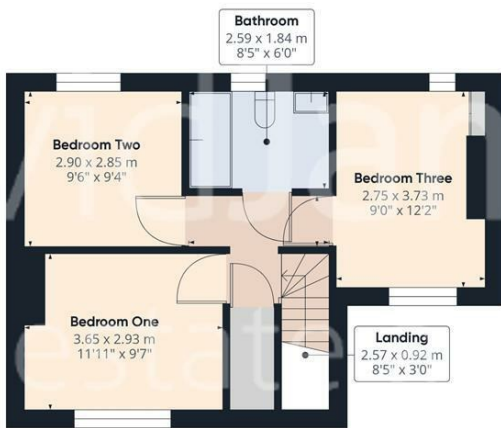
- Semi detached house situated on a quiet cul-de-sac
- Three bedrooms
- Entrance hall with understairs storage cupboard
- Lounge with fireplace with gas fire and glazed door to the rear garden
- Dining room with feature window to the front elevation
- Kitchen with a range of panelled units, tiled flooring and large range cooker
- First floor bathroom/Wc with white suite, spa bath and shower off mixer taps
- Gas central heating, UPVC double glazing
- Driveway provides off road parking
- Enclosed rear garden with gravelled and paved patio areas, pathways and established borders







Floor 0



Floor 1

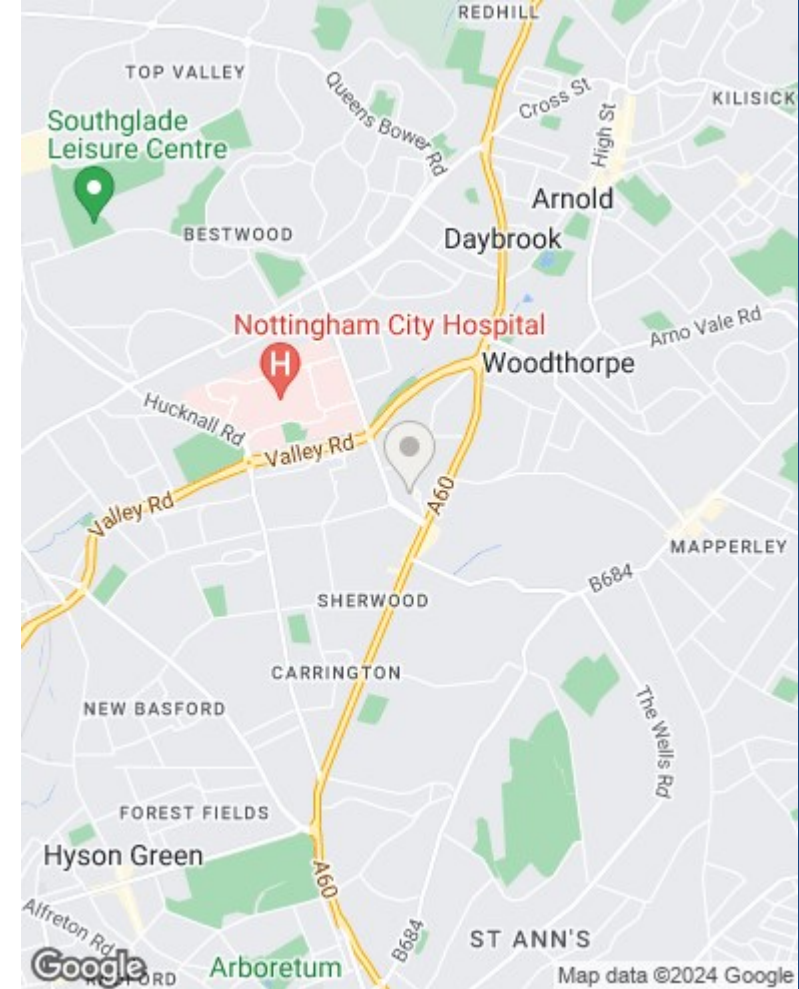


Approximate total area⁽¹⁾
80.97 m²
871.57 ft²

(1) Excluding balconies and terraces

While every attempt has been made to ensure accuracy, all measurements are approximate, not to scale. This floor plan is for illustrative purposes only.

GIRAFFE360



These particulars are produced in good faith, are set out as a general guide only and do not constitute any part of a contract. No person in the employment of David James Estate Agents Ltd has any authority to make any representation whatsoever in relation to the property. All services, together with electrical fittings or fitted appliances have NOT been tested. All the measurements given in the details are approximate. Floor plans are for illustrative purposes only and are not drawn to scale. The position and size of doors, windows, appliances and other features are approximate only. The photographs of this property have been taken with a 10mm wide-angle lens. No responsibility can be accepted for any loss or expense incurred in viewing. If you have a property to sell you may wish to take advantage of our free valuation service. David James Estate Agents have established professional relationships with third-party suppliers for the provision of services to Clients. As remuneration for this professional relationship, the agent receives referral commission from the third-party company. David James Estate Agents receives the following commission from each third party supplier on a per referral basis: W A Barnes Ltd: £60 including VAT. All Moves UK Ltd: 18% including VAT of the invoice total (£107 including VAT average). MoveWithUs Limited: £188 including VAT (average).

Council Tax Band: A
Nottingham City Council
Freehold

DavidJames
the estate agent

David James Estate Agents
100 Front Street, Nottingham, NG5 7EJ
t: 0115 955 5550 e: arnold@david-james.com

