



 3

 2

 1

 D

**DavidJames**  
the estate agent

**Teversal Avenue, Nottingham, NG7 1PX**

**£220,000**

## About This Property

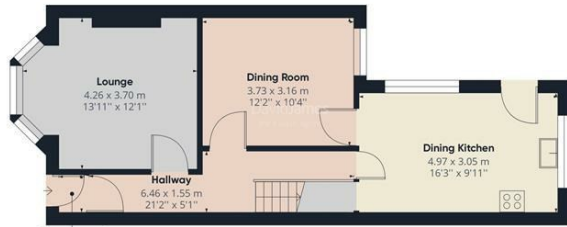
This is a great opportunity for a homeowner or an investor to purchase a three storey period style semi detached house with ample accommodation. There is a porch and entrance hall, two good size reception rooms and a well proportioned dining kitchen to the ground floor with two double bedrooms, a bathroom and an additional separate WC to the first floor in addition to a further second floor double bedroom. Outside, there is an enclosed rear yard area. The property is situated close to bus routes, supermarkets and is within walking distance of Nottingham city centre and is sold with no upward chain.



- Three storey period style semi detached house
- Three double bedrooms set over the first and second floors
- Entrance porch and entrance hallway
- Lounge with bay window to the front elevation, dining room
- Well proportioned dining kitchen with a range of base and eye level units
- First floor bathroom/WC with electric shower, separate additional WC to the first floor
- Gas central heating, UPVC double glazing
- Enclosed rear yard
- Situated close to Nottingham city centre
- Sold with no upward chain

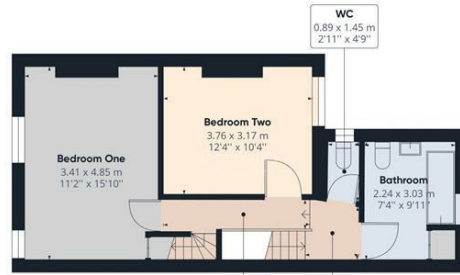






**Porch**  
0.67 x 0.90 m  
2'2" x 2'11"

Floor 0



**Landing**  
3.52 x 0.82 m  
11'6" x 2'8"

**Landing**  
1.28 x 1.39 m  
4'2" x 4'6"

Floor 1



**Landing**  
0.47 x 0.71 m  
1'6" x 2'4"

Floor 2



Approximate total area<sup>(1)</sup>  
106.47 m<sup>2</sup>  
1146.00 ft<sup>2</sup>

(1) Excluding balconies and terraces

While every attempt has been made to ensure accuracy, all measurements are approximate, not to scale. This floor plan is for illustrative purposes only.

GIRAFFE360



These particulars are produced in good faith, are set out as a general guide only and do not constitute any part of a contract. No person in the employment of David James Estate Agents Ltd has any authority to make any representation whatsoever in relation to the property. All services, together with electrical fittings or fitted appliances have NOT been tested. All the measurements given in the details are approximate. Floor plans are for illustrative purposes only and are not drawn to scale. The position and size of doors, windows, appliances and other features are approximate only. The photographs of this property have been taken with a 10mm wide-angle lens. No responsibility can be accepted for any loss or expense incurred in viewing. If you have a property to sell you may wish to take advantage of our free valuation service. David James Estate Agents have established professional relationships with third-party suppliers for the provision of services to Clients. As remuneration for this professional relationship, the agent receives referral commission from the third-party company. David James Estate Agents receives the following commission from each third party supplier on a per referral basis: W A Barnes Ltd: £60 including VAT. All Moves UK Ltd: 18% including VAT of the invoice total (£107 including VAT average). MoveWithUs Limited: £188 including VAT (average).

**Council Tax Band: B**  
**Nottingham City Council**  
**Freehold**

**DavidJames**  
the estate agent

David James Estate Agents  
100 Front Street, Nottingham, NG5 7EJ  
t: 0115 955 5550 e: arnold@david-james.com

