

Estates

Browne

B
E

SALES & LETTINGS



**Andorra Court
Widmore Road
Bromley, Kent BR1 3AE**

A gorgeous 1 bedroom third floor warden assisted retirement apartment with lift



Andorra Court

Guide Price £120,000

A gorgeous 1 double bedroom third floor warden assisted retirement apartment (with lift and minimum age 60) benefiting from a lovely lounge and bedroom overlooking the well maintained communal gardens to the rear with outside seating areas.

Having recently been modernised there is a stunning kitchen with built-in electric hob, under oven, extractor hood, microwave, intergraded fridge/freezer, and granite effect work surfaces together with a contemporary fully tiled shower room with double shower.

The apartment is neutrally decorated and finished with hardwood Oak finish flooring throughout.

Bromley town centre with The Glades Shopping centre is about half a mile away with local bus services outside. Bromley North and South stations are also within about half a mile.

Lease: 189 years

Service Charge: Approx £3,000 pa

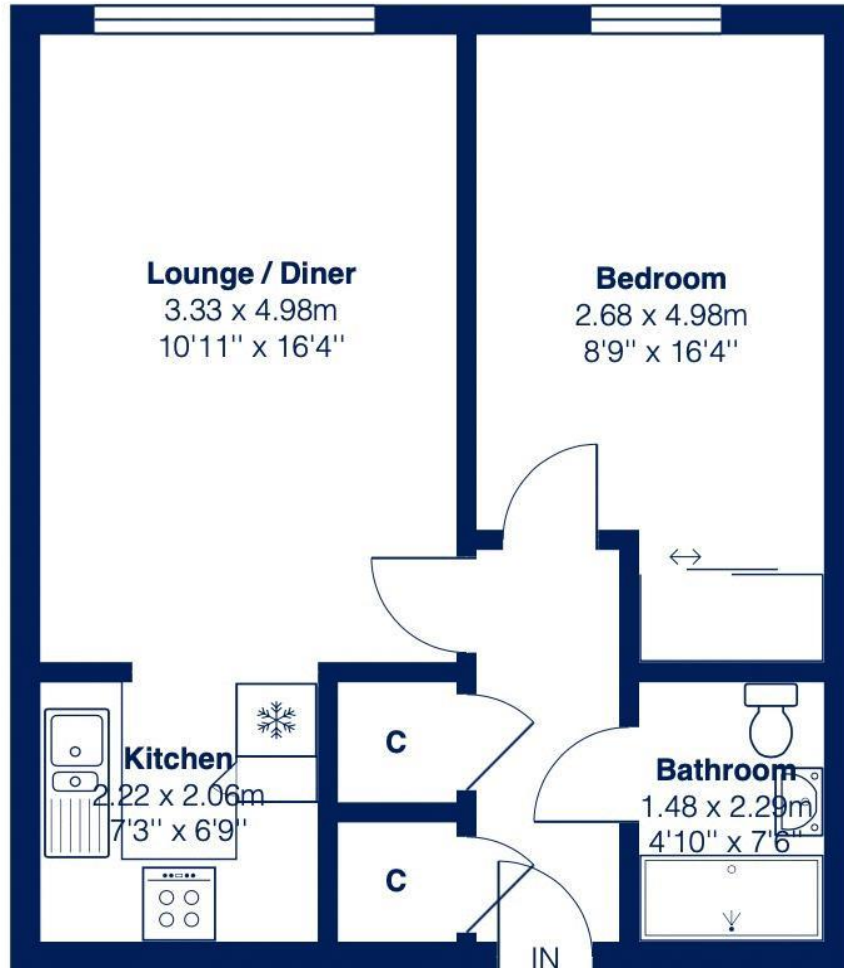
Ground Rent: £175 pa

- 1 bedroom
- Lounge overlooking the garden
- Stunning Kitchen
- Contemporary shower room
- Double glazed
- Many built-in appliances

- Ample storage space
- Lift
- Residents Parking
- Entry phone system
- Communal grounds
- Chain free







Andorra Court

Total Area: 45.1 m² ... 485 ft²

All measurements are approximate and for display purposes only

Disclaimer

We have not tested any services, systems or appliances at this property. We strongly recommend that all the information which we provide is verified by yourselves on inspection, and by your Surveyor and Conveyancer.



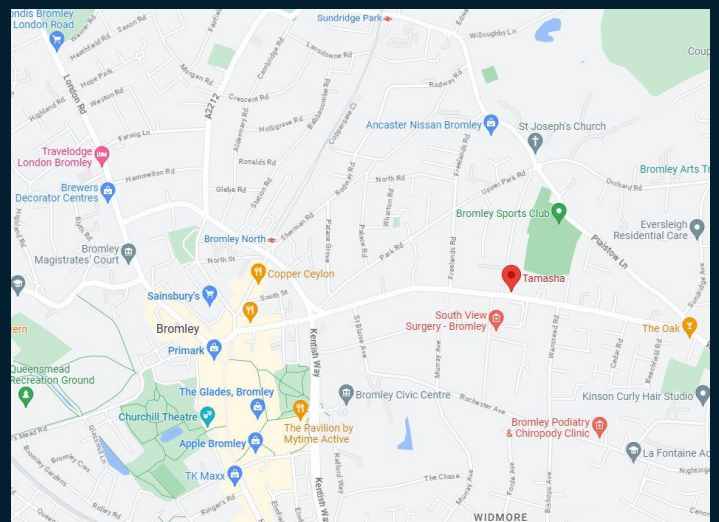
Additional Information:

Council Tax Band: C

Location: BICKLEY

Viewing: Via Browne Estates

Energy Efficiency Rating		Current	Potential
Very energy efficient - lower running costs			
(92-100)	A		
(81-91)	B		
(69-80)	C	70	80
(55-68)	D		
(39-54)	E		
(21-38)	F		
(1-20)	G		
Not energy efficient - higher running costs			
England, Scotland & Wales		EU Directive 2002/91/EC	



197 Widmore Road, Bromley, Kent BR1 2RG

Email: sales@browne-estates.co.uk

Tel: 020 8466 9101

www.browne-estates.co.uk