



Freelands Road, Bromley, Bromley, Kent, BR1 3NY

Monthly Rental Of £1,650

Available End June .

Unfurnished.

A beautifully presented 2 double bedroom Victorian upper ground floor apartment with it's own rear garden.

Bright, well presented sitting room/dining room with shutters and fireplace, 2 light bedrooms, gloss white kitchen with many appliances and door to a 70' lovely garden with a summerhouse.

Parking to front.

Superb Lounge/Diner

White Kitchen

Many appliances

2 Double Bedrooms

Luxury Bathroom

Unfurnished

Period Features

Parking

ACCOMMODATION

Lounge/Diner 14' 10" x 12' 10" (4.52m x 3.91m)

Feature fireplace. Shutters.

Kitchen: 15' 0" x 9' 10" (4.57m x 2.99m)

Washing machine, cooker, gas hob, extractor hood, fridge/freezer, combi boiler. Door to garden

Bedroom 1: 12' 8" x 11' 8" (3.86m x 3.55m)

Lovely room with a window to rear, built-in wardrobe.

Bedroom 2: 15' 0" x 7' 8" (4.57m x 2.34m)

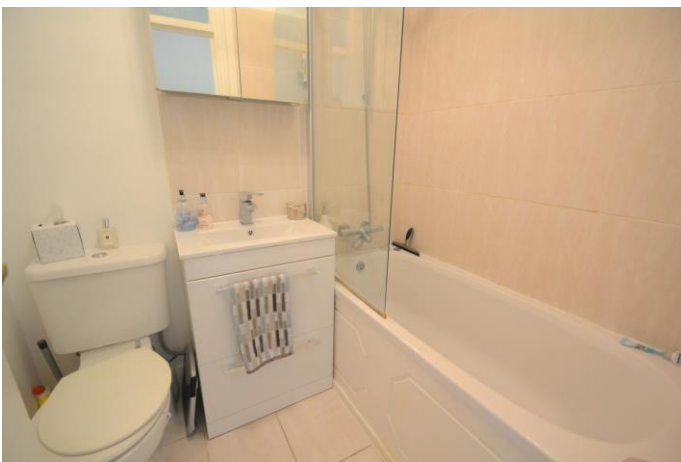
Window to front

Bathroom:

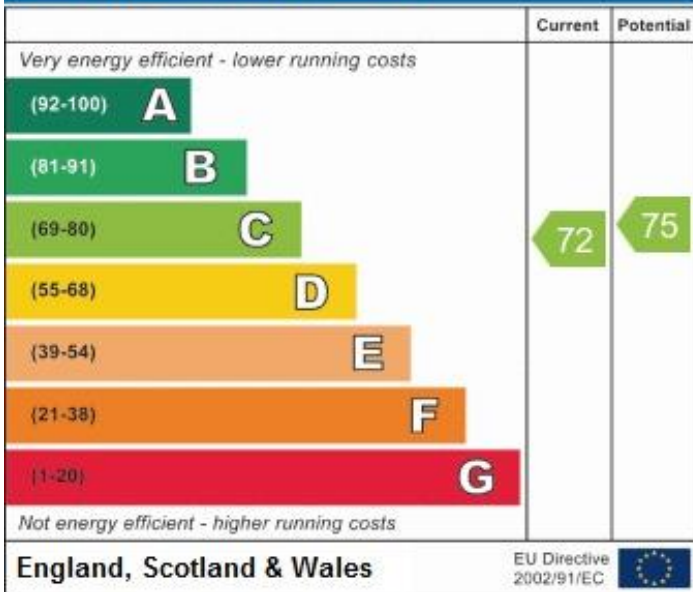
Luxury 3 piece white suite with shower attachment.

Garden: *Approximately* 70' 0" x 0' 0" (21.32m x 0.00m)

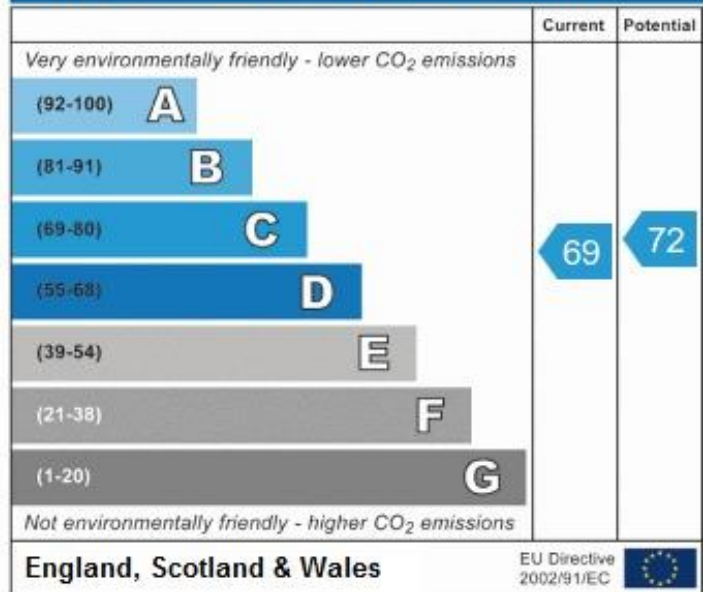
Own private 70' garden to rear with summerhouse.



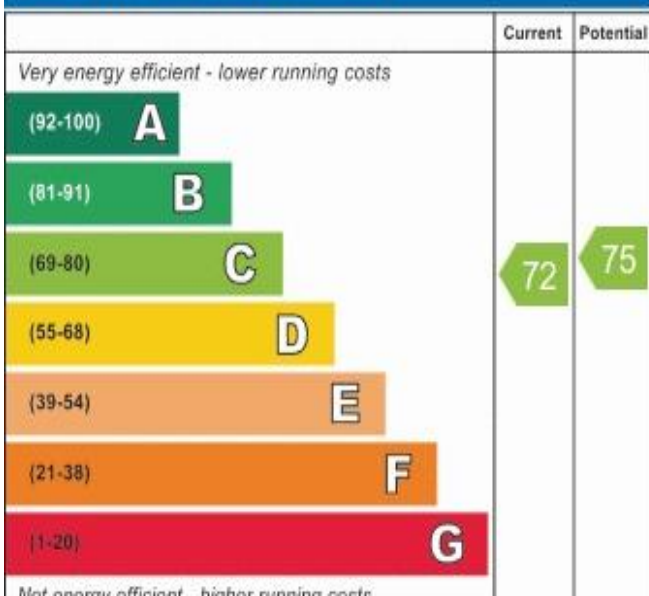
Energy Efficiency Rating



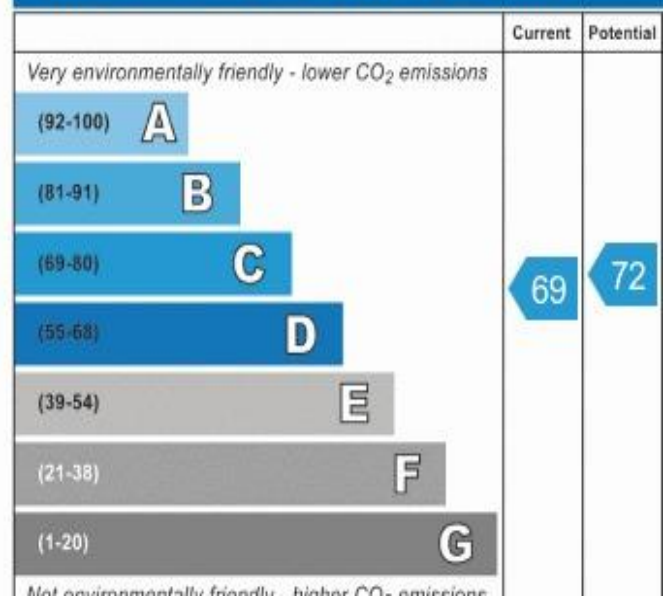
Environmental Impact (CO₂) Rating



Energy Efficiency Rating



Environmental Impact (CO₂) Rating





Viewing

Please call us on 020 8466 9101 to make an appointment.

Browne Estates
197 Widmore Road
Bromley
Kent
BR1 2RG

Tel: 020 8466 9101
Email: sales@browne-estates.co.uk
Web: browne-estates.co.uk

Disclaimer

We have not tested any services, systems or appliances at this property. We strongly recommend that all the information which we provide is verified by yourselves on inspection, and by your Surveyor and Conveyancer.