



## Page Heath Villas Bromley, Kent BR1 2QN

*A one bedroom lower ground floor maisonette with a private garden*



## Page Heath Villas

Guide Price £250,000

A one bedroom lower ground floor maisonette with a private garden in a convenient location for Bickley Station and local amenities.

The accommodation comprises an entrance hallway that leads to the reception room with French doors that open to the private garden.

There is a double bedroom with bay window and space for wardrobes.

The kitchen has been fitted with a range of wall and base units, oven and electric hob.

The bathroom is off the kitchen and includes a shower over the bath, washbasin and WC.

Further benefits include double glazed windows, gas central heating, storage cupboard and a private garden. Chain Free

- One Double Bedroom
- Lower Ground Floor Flat
- Private Garden
- 12' x 12' Reception room
- 12' x 12' Double Bedroom

- 10' x 7' Kitchen
- Bathroom
- Conveniently Located To Bickley Station
- Close To Local Shops
- Chain Free





**Disclaimer**

We have not tested any services, systems or appliances at this property. We strongly recommend that all the information which we provide is verified by yourselves on inspection, and by your Surveyor and Conveyancer.

B2139 Ravensworth 01670 713330



## Additional Information

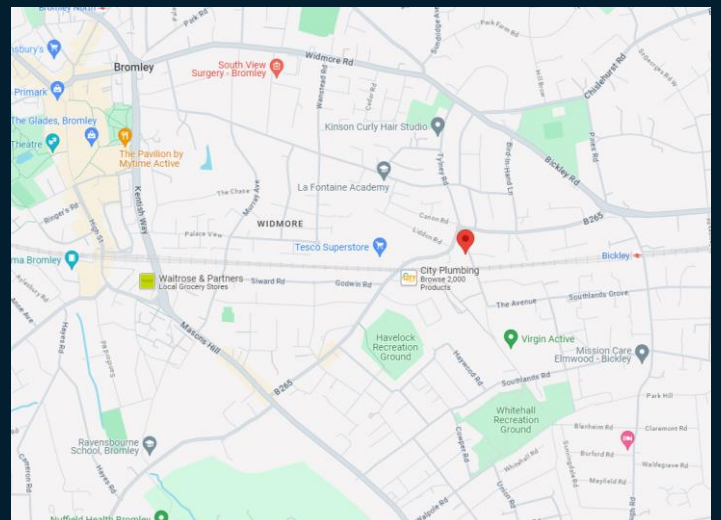
Council Tax Band: C

EPC Rating: D

Location: BICKLEY, BROMLEY

Viewing: Via Browne Estates

Energy Efficiency Rating		Current	Potential
Very energy efficient - lower running costs			
(92-100)	<b>A</b>		
(81-91)	<b>B</b>		
(69-80)	<b>C</b>		78
(55-68)	<b>D</b>	65	
(39-54)	<b>E</b>		
(21-38)	<b>F</b>		
(1-20)	<b>G</b>		
Not energy efficient - higher running costs			
England, Scotland & Wales		EU Directive 2002/91/EC	



197 Widmore Road, Bromley, Kent BR1 2RG

Email: [sales@browne-estates.co.uk](mailto:sales@browne-estates.co.uk)

Tel: 020 8466 9101

[www.browne-estates.co.uk](http://www.browne-estates.co.uk)