

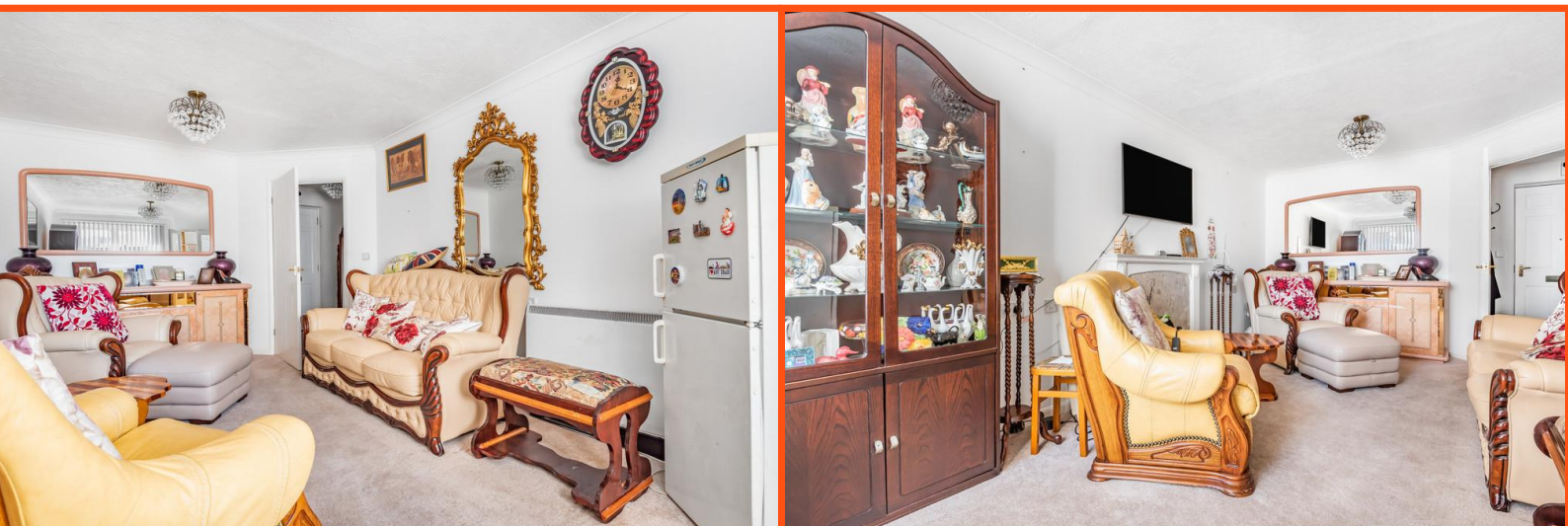


Paxton Court, Marvels Lane, London, SE12 9QQ

Asking Price of £150,000

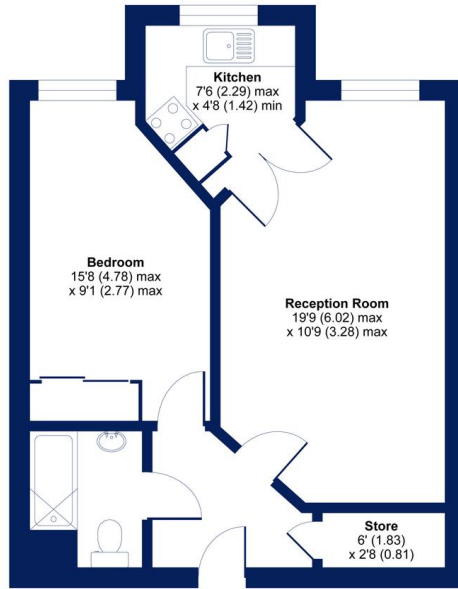
COCKBURN
ESTATE AND LETTINGS AGENTS

A spacious one-bedroom apartment in excellent condition, situated on the ground floor in the sought after Paxton Court, available to those over the age of 60. The accommodation, which has been recently redecorated, is of a high standard. It comprises a welcoming entrance hall with a large storage cupboard, a huge well-presented lounge and kitchen with double doors off the lounge; a good size, delightfully decorated bedroom with glass-fronted built-in wardrobes and a clean, modern bathroom. The property is move-in ready. There is a very pleasant and spacious communal lounge, communal laundry and well-maintained gardens which are accessible to residents and overlooked from both the reception room and bedroom.



Marvels Lane, London, SE12

Approximate Area = 491 sq ft / 45.6 sq m
For identification only - Not to scale



FIRST FLOOR

 Certified Property Measurer
Floor plan produced in accordance with RICS Property Measurement Standards (incorporating International Property Measurement Standards (IPMS Residential)). © richcom 2021. Produced for Cockburn Estates Agents. REF: 700528

