

COCKBURN
ESTATE AND LETTINGS AGENTS

Court Farm Road

SE9 4LA

FOR SALE
COCKBURN
020 8859 8590



**** CHAIN FREE ****

**Cockburn are pleased to present
this three bedroom mid terrace
property situated in a popular
location in Mottingham.**

The property briefly comprises reception room, kitchen, extended lounge area, and a shower room to the ground floor, along two bedrooms and a family bathroom to the first floor, with a further third room in the loft conversion.

Externally the property benefits from a good sized garden to the rear, with both patio area and lawned green - the perfect space for those with green fingers looking to create their very own outdoor oasis!

In terms of location, Court Farm Road is ideally situated for both convenience and comfort. The property has a number of green spaces, parks and leisure facilities within a stones throw, whilst also being close to local shops, amenities and highly regarded schools and nurseries. Transport links are within easy reach, including Grove Park, Elmstead Woods and Mottingham railway stations, with regular trains into the city & beyond.

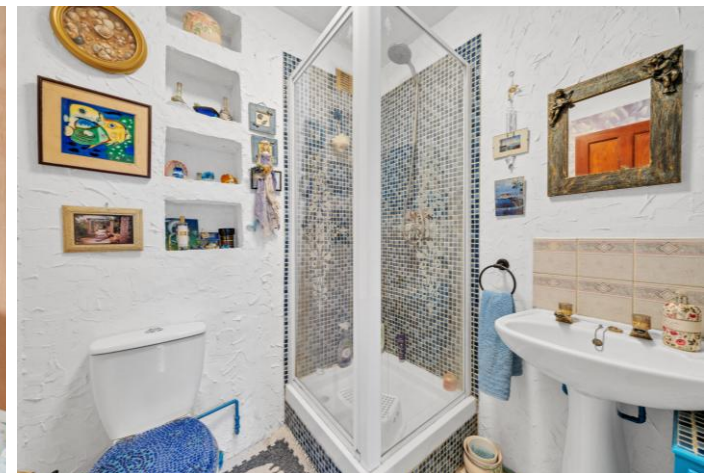
Excellent bus links keep you connected with the surrounding areas, including Mottingham, Eltham and Bromley.

This property would be an ideal First Time Purchase or Buy To Let Investment for someone looking to get their foot on the property ladder, and viewings are advised to appreciate the true potential of this lovely house!



Key Features:

- ❑ Chain Free Sale
- ❑ Three Bedrooms
- ❑ Loft Conversion
- ❑ Two Reception Rooms
- ❑ Extended To Rear
- ❑ Large Garden With Patio & Lawned Green
- ❑ Off Street Parking
- ❑ Perfect Project Buy For First Time Buyers
- ❑ Excellent Transport Links Nearby
- ❑ Ideal For Growing Families
- ❑ Council Tax Band C - London Borough Of Bromley





Court Farm Road, SE9

Approximate Gross Internal Area = 1104 sq ft / 102.6 sq m

EPC: TBC

COUNCIL TAX BAND: C

TENURE: Freehold

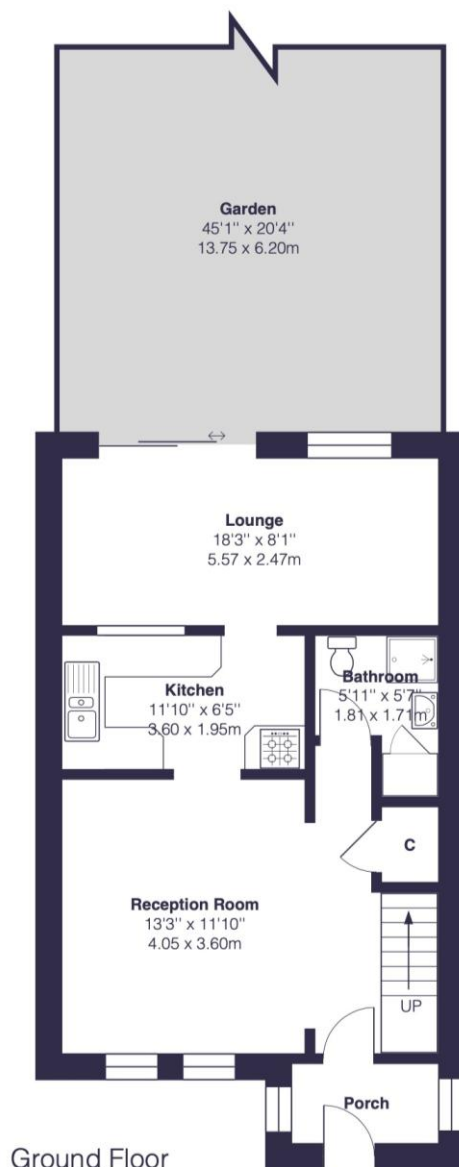
For more information on this property or to arrange a viewing please call the office on

0208 859 8590

Alternatively, you can scan below to view all of the details of the property online.



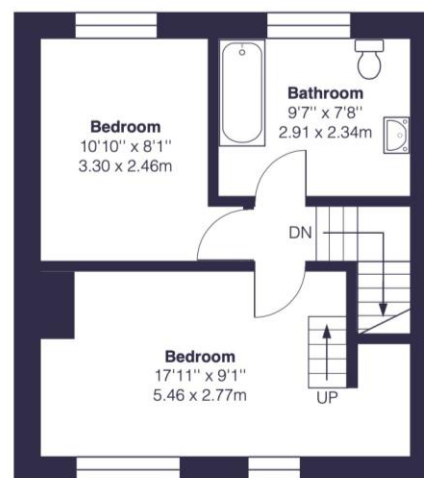
352 Footscray Road
New Eltham
London
SE9 2EB



Ground Floor



Second Floor



First Floor